



sparco
Teamwork

THE POWER OF PERFORMANCE



SAFETY SHOES & WORKWEAR

CATALOGUE **2024** / ENGLISH



THE POWER OF PERFORMANCE

COMFORT
AND SAFETY
RUN WITH A NEW
IMPULSE



IMPULSE LINE

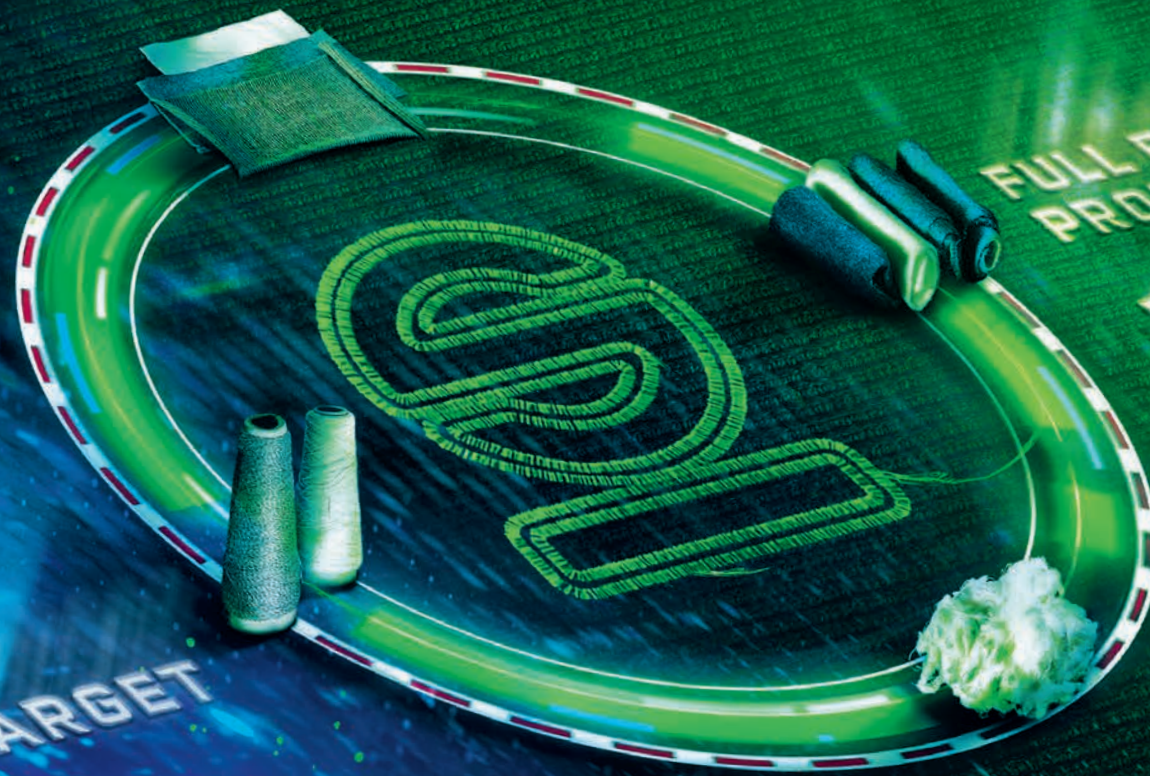
THE WORK SHOE THAT **MAKES YOU FEEL GOOD.**

ESD - SIPS
SR - FO - HRO

CE EN ISO 20345:2022

OUR RACE TOWARD SUSTAINABILITY

PARENTAL POLICY
3 STARS IN THE
LEGALITY RATING
CARBON
NEUTRALITY TARGET



FULL EFFICIENCY
PRODUCT LINE
RENEWABLE ENERGY
REFORESTING



Discover our projects for
**ENVIRONMENTAL, SOCIAL
and GOVERNANCE (ESG)**

SAFETY AND TECHNOLOGY IN MOTORSPORT AND AT WORK



BEST FORMULA1 TEAMS CHOOSE SPARCO



When you think about the concept of **safety**, the connection to **Sparco** is almost automatic. For more than forty years Sparco has been the official safety supplier of **the most important world teams** in the most dangerous sport in the world: **MOTORSPORT**.

Sparco Teamwork is the collection of **shoes and workwear** in which **safety, lightness and design** draw inspiration from the motorsport experience, translating into a work key with the same goal: to guarantee **maximum performance**.



WELCOME TO THE SPARCO WORLD.



RACE & RUNNER **INDEX** OF WORKWEAR

SPARCO / CATALOGUE 2024

SAFETY SHOES

p. 10 - 53



WORKWEAR

p. 54 - 81



WORK GLOVES

p. 80 - 85



POP TOOLS

p. 86 - 89



OUTLET

p. 90 - 93



TEAMWORK TECHNOLOGY

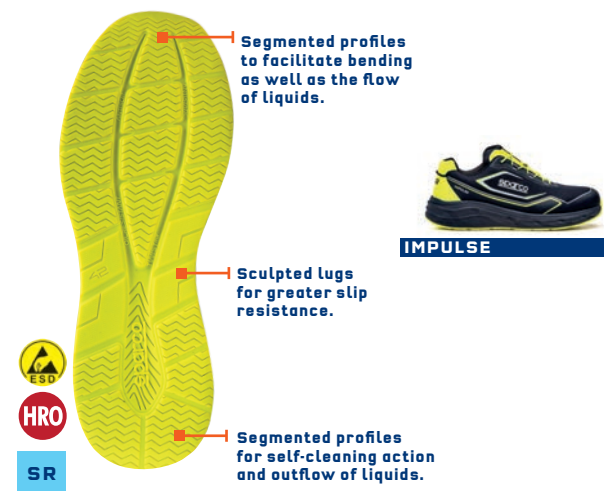


SPARCO TEAMWORK shoes are developed using the best technologies in terms of soles and midsoles, in order to optimize the exertion produced in walking by the forefoot where the greatest stresses for the user are concentrated, thus returning **70% of the energy produced.**

This benefit offers advantages in using SPARCO TEAMWORK footwear, such as:

- less fatigue at the end of the day, thus improving reflexes and attention to the dangers of slipping and tripping injuries;
- less exertion in walking;
- less strain on the back and spine;
- relaxation of the muscles.

NEW TWISTTECH



The specific Zigzag design of the TWIST TECH tread promotes flexion, guaranteeing maximum grip in every situation.

FLEXGRIP+



Super light sole in dual density polyurethane with special design of the lugs which guarantee maximum grip in all flexion conditions.

CROSSGRIP



Ultralight sole with PHYLON midsole and CROSSGRIP rubber tread with lugs that guarantee a strong grip even on particularly uneven surfaces.

MULTIGRIP



Ultralight sole with shock absorbing effect provided by a thick ultralight EVA midsole and MULTIGRIP RUBBER tread.

R-FLEX



Ultralight sole in single-density polyurethane designed for intensive use where the foot bends frequently.

PRISMFLEX



Ultralight sole with EVA midsole and genuine rubber tread with PRISMA texture that provides strong grip in all foot bending conditions.

DYNATECH



Lightweight dual density polyurethane sole with dynamic drain design to facilitate the outflow of liquids, always guaranteeing maximum grip.

STREETTECH



Ultralight dual-density polyurethane sole designed to facilitate dynamic use and move safely in all situations.

WAVE TECH



Ultralight sole with phylon midsole and rubber tread. Ideal for all uses, even for outdoors in leisure time.

SAFETY SHOES



LINE ORACLE RED BULL RACING LINE

THANKS TO THE AGREEMENT WITH THE FORMULA1 TEAM "ORACLE RED BULL RACING", SPARCO DEVELOPED A SAFETY SHOES LINE MADE OF PRECIOUS MATERIALS AND SPECIAL ORACLE RED BULL RACING LIVERIES. FOR THOSE SEEKING SAFETY AND PERFORMANCE, IN FULL MOTORSPORT SPIRIT.

ORACLE
Red Bull
RACING

sparco

TEAM SUPPLIER

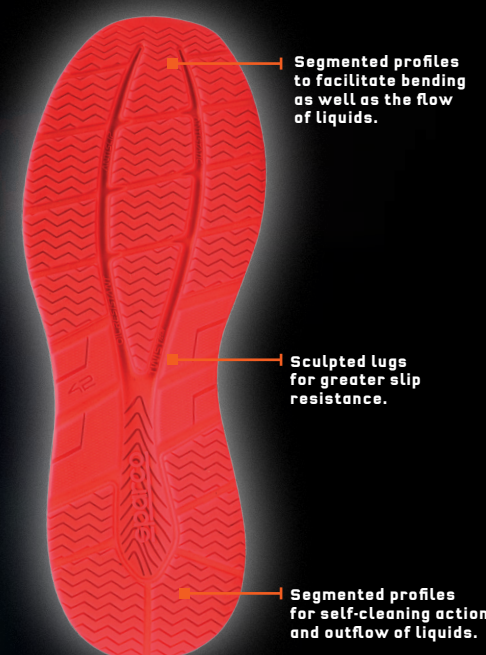
OFFICIAL LICENSED PRODUCT



MULTIGRIP



TWISTTECH



SUPERLIGHT EVA MIDSOLE AND HRO RUBBER TREAD.

NEW

CE EN ISO 20345:2022

MONDOPOINT
11

RED BULL **ESD** S3S SR FO HRO

07535RB..BMRS



UPPER:
fine water-repellent nubuck and suede.
Additional 2nd color laces included.

LINING:
breathable micro-perforated 3D fabric.

REMOVABLE INSOLE:
antistatic in PU with ergonomic thermoforming.

ANTI-PERFORATION INSOLE:
made from zero-perforation textile fibre.

TOE CAP:
non magnetic fibreglass, insulating, resistant to 200J.

SOLE:
EVA midsole and HRO nitrile rubber tread with energy absorption on heel.

SIZES:
36-48 (UK 3½ -13)

MILTON **ESD** S1PS SR FO HRO

07545RB..BM



UPPER:
seamless breathable micro-perforated 3D fabric, anti-abrasion TPU reinforcements and 3D HF details.

LINING:
breathable micro-perforated 3D fabric.

REMOVABLE INSOLE:
antistatic PU low density with ergonomic thermoforming.

ANTI-PERFORATION INSOLE:
made from zero-perforation ultralight textile fiber (PS - nail Ø 3.0 mm).

TOE CAP:
non magnetic fibreglass, insulating, resistant to 200J.

ANTI-SLIP ANTI-STATIC SOLE:
super-comfortable EVA midsole, high energy absorption and FO+HRO nitrile rubber tread

SIZES:
36-48 (UK 3½ -13)

NEW LINE IMPULSE LINE

RUNNING STYLE SAFETY FOOTWEAR COMPLIANT WITH THE NEW **EN ISO 20345:2022**. **SEAMLESS UPPER IN ULTRA-BREATHABLE 3D FABRIC**, ANTI-ABRASION TPU REINFORCEMENTS AND 3D HF DETAILS. EVA MIDSOLE AND **"FO+HRO" RUBBER TREAD**. LIGHTWEIGHT AND SPORTY, TO ENHANCE THE DYNAMICITY OF THOSE WHO WEAR THEM.

Segmented profiles for self-cleaning action and profiles the outflow of liquids.

Sculpted lugs for greater slip resistance.

Segmented profiles to facilitate bending as well as the flow of liquids.



THE SPECIFIC ZIGZAG DESIGN OF THE **TWIST TECH TREAD** PROMOTES FLEXION, GUARANTEEING MAXIMUM GRIP IN EVERY SITUATION.



NEW

CE EN ISO 20345:2022



TWIST^{TECH}

PS | Perforation resistance (min.1100 N & each single value ≥950 N) non-metal insert: d=3.0mm Conical Nail.

SR | Slip resistance - on ceramic tile floor with glycerine.

P. 97



LUTON ESD SIPS SR FO HRO

07545..NRGF



NEW

UPPER: seamless breathable micro-perforated 3D fabric, anti-abrasion TPU reinforcements and 3D HF details.

LINING: breathable micro-perforated 3D fabric.

REMOVABLE INSOLE: antistatic PU low density with ergonomic thermoforming.

ANTI-PERFORATION INSOLE: made from zero-perforation ultralight textile fiber (PS - nail Ø 3.0 mm).

TOE CAP: non magnetic fiberglass, insulating, resistant to 200J.

ANTI-SLIP ANTI-STATIC SOLE: super-comfortable EVA midsole, high energy absorption and FO+HRO nitrile rubber tread

SIZES: 36-48 (UK 3½ -13)

WILLEN ESD SIPS SR FO HRO

07545..BMVF



NEW

UPPER: seamless breathable micro-perforated 3D fabric, anti-abrasion TPU reinforcements and 3D HF details.

LINING: breathable micro-perforated 3D fabric.

REMOVABLE INSOLE: antistatic PU low density with ergonomic thermoforming.

ANTI-PERFORATION INSOLE: made from zero-perforation ultralight textile fiber (PS - nail Ø 3.0 mm).

TOE CAP: non magnetic fiberglass, insulating, resistant to 200J.

ANTI-SLIP ANTI-STATIC SOLE: super-comfortable EVA midsole, high energy absorption and FO+HRO nitrile rubber tread

SIZES: 36-48 (UK 3½ -13)

LINE GYMKHANA LINE

SNEAKER-STYLE SAFETY FOOTWEAR,
MADE OF **EVA MIDSOLE** AND **MULTIGRIP**
RUBBER TREAD, VELOUR MICROFIBRE UPPER
AND BREATHABLE MICRO-PERFORATED
FABRIC. **SUITABLE FOR ANY USE.**

Self-cleaning profiles
for the outflow of liquids.

Self-cleaning profiles
for the drainage of liquids.

Sculpted lugs
for greater slip resistance.

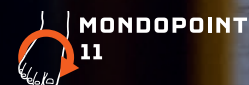


**SUPERLIGHT EVA MIDSOLE
AND MULTIGRIP RUBBER TREAD.**



MULTIGRIP

CE EN ISO 20345:2011



DANI S1P SRC

07527..BMGF



UPPER:
velour microfibre and breathable micro-perforated fabric.
Additional 2nd color laces included.

LINING:
breathable micro-perforated 3D fabric.

REMOVABLE INSOLE:
antistatic in PU with ergonomic thermoforming.

ANTI-PERFORATION INSOLE:
made from zero-perforation textile fibre.

TOE CAP:
non magnetic fibreglass,
insulating, resistant to 200J.

SOLE:
EVA midsole and nitrile rubber tread
with energy absorption on heel.

SIZES:
36-48 (UK 3 ½ -13)

SEB S1P SRC

07527..VSLI



UPPER:
velour microfibre and breathable micro-perforated fabric.
Additional 2nd color laces included.

LINING:
breathable micro-perforated 3D fabric.

REMOVABLE INSOLE:
antistatic in PU with ergonomic thermoforming.

ANTI-PERFORATION INSOLE:
made from zero-perforation textile fibre.

TOE CAP:
non magnetic fibreglass,
insulating, resistant to 200J.

SOLE:
EVA midsole and nitrile rubber tread
with energy absorption on heel.

SIZES:
36-48 (UK 3 ½ -13)

GYMKHANA



SNEAKER-STYLE SAFETY FOOTWEAR
MADE OF FINE **WATER-REPELLENT**
NUBUCK AND SUEDE,
EVA MIDSOLE AND "HRO"
RUBBER TREAD WITH
TPU HEEL REINFORCEMENT.
SUITABLE FOR ANY OCCASION.

EN ISO 20345:2011



Self-cleaning profiles
for the outflow of liquids.

Self-cleaning profiles
for the drainage of liquids.

Sculpted lugs
for greater slip resistance.



EVA ULTRALIGHT MIDSOLE
AND MULTIGRIP HRO RUBBER TREAD.



MULTIGRIP

TACOMA ESD S3 SRC HRO

07535..BMRS



UPPER:
fine water-repellent nubuck and suede.
Additional 2nd color laces included.
LINING:
breathable micro-perforated 3D fabric.
REMOVABLE INSOLE:
antistatic in PU with
ergonomic thermoforming.
ANTI-PERFORATION INSOLE:
made from zero-perforation textile fibre.
TOE CAP:
non magnetic fibreglass,
insulating, resistant to 200J.
SOLE:
EVA midsole and HRO nitrile rubber
tread with energy absorption on heel.
SIZES:
36-48 (UK 3 ½ -13)

OLYMPUS ESD S3 SRC HRO

07536..BMRS



UPPER:
fine water-repellent nubuck and suede.
Additional 2nd color laces included.
LINING:
breathable micro-perforated 3D fabric.
REMOVABLE INSOLE:
antistatic in PU with
ergonomic thermoforming.
ANTI-PERFORATION INSOLE:
made from zero-perforation textile fibre.
TOE CAP:
non magnetic fibreglass,
insulating, resistant to 200J.
SOLE:
EVA midsole and HRO nitrile rubber
tread with energy absorption on heel.
SIZES:
36-48 (UK 3 ½ -13)

CHESTER ESD S3 SRC HRO

07535..GSVF



UPPER:
fine water-repellent nubuck and suede.
Additional 2nd color laces included.
LINING:
breathable micro-perforated 3D fabric.
REMOVABLE INSOLE:
antistatic in PU with
ergonomic thermoforming.
ANTI-PERFORATION INSOLE:
made from zero-perforation textile fibre.
TOE CAP:
non magnetic fibreglass,
insulating, resistant to 200J.
SOLE:
EVA midsole and HRO nitrile rubber
tread with energy absorption on heel.
SIZES:
36-48 (UK 3 ½ -13)

ACROPOLIS ESD S3 SRC HRO

07536..GSAF



UPPER:
fine water-repellent nubuck and suede.
Additional 2nd color laces included.
LINING:
breathable micro-perforated 3D fabric.
REMOVABLE INSOLE:
antistatic in PU with
ergonomic thermoforming.
ANTI-PERFORATION INSOLE:
made from zero-perforation textile fibre.
TOE CAP:
non magnetic fibreglass,
insulating, resistant to 200J.
SOLE:
EVA midsole and HRO nitrile rubber
tread with energy absorption on heel.
SIZES:
36-48 (UK 3 ½ -13)

LINE MARTINI RACING LINE

SPECIAL LINE OF SAFETY FOOTWEAR
COMPLIANT WITH THE NEW **EN ISO 20345:2022**
IN MARTINI RACING LIVERY.
FLEXIBLE, LIGHTWEIGHT SOLES AND PREMIUM
MATERIALS SUCH AS **NUBUCK, SUEDE OR VELOUR MICROFIBER**.
COMFORTABLE AND WITH A UNIQUE STYLE.



NEW
CE EN ISO 20345:2022

MULTIGRIP

FLEXGRIP+



MARTINI ESD S1PS SR FO HRO

07527MR..BM



UPPER:
velour microfibre and breathable micro-perforated fabric.
Additional 2nd color laces included.

LINING:
breathable micro-perforated 3D fabric.

REMOVABLE INSOLE:
antistatic in PU with ergonomic thermoforming.

ANTI-PERFORATION INSOLE:
made from zero-perforation textile fibre.

TOE CAP:
non magnetic fibreglass, insulating, resistant to 200J.

SOLE:
EVA midsole and HRO nitrile rubber tread with energy absorption on heel.

SIZES:
36-48 (UK 3 ½ -13)

MONTECARLO ESD S3S SR FO HRO

07535MR..BM



UPPER:
fine water-repellent nubuck and suede.
Additional 2nd color laces included.

LINING:
breathable micro-perforated 3D fabric.

REMOVABLE INSOLE:
antistatic in PU with ergonomic thermoforming.

ANTI-PERFORATION INSOLE:
made from zero-perforation textile fibre.

TOE CAP:
non magnetic fibreglass, insulating, resistant to 200J.

SOLE:
EVA midsole and HRO nitrile rubber tread with energy absorption on heel.

SIZES:
36-48 (UK 3 ½ -13)

SANREMO ESD S3S SR FO LG

07537MR..BMRS



UPPER:
water repellent suede and microfiber reinforcements.
Additional 2nd color laces included .

LINING:
breathable micro-perforated 3D fabric.

REMOVABLE INSOLE:
antistatic PU with ergonomic thermoforming.

ANTI-PERFORATION INSOLE:
made from zero-perforation ultralight textile fiber (PS - nail Ø 3.0 mm).

TOE CAP:
non magnetic fibreglass, insulating, resistant to 200J.

SOLE:
PU dual density with absorption of energy on the heel + LG.

SIZES:
35-48 (UK 2 ½ -13)

LINE INDY LINE

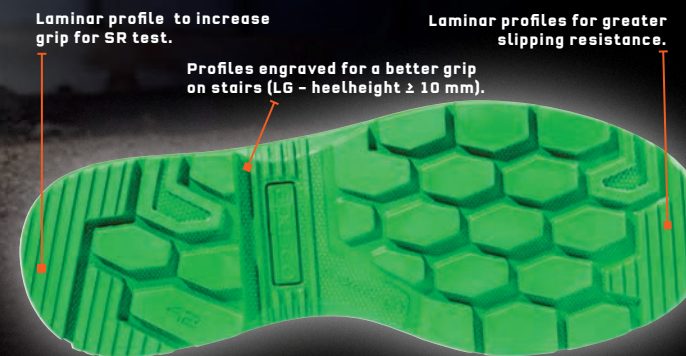
SAFETY FOOTWEAR COMPLIANT WITH THE NEW EN ISO 20345:2022, MADE OF FINE **PERFORATED SUEDE LEATHER**, "FLEXGRIP+" BI-DENSITY PU SOLE WITH SPECIAL HEEL COMPLIANT WITH THE REQUIREMENTS FOR LADDER GRIP (LG). **COMFORTABLE AND BREATHABLE TO WORK EASILY EVERYDAY.**

PS | Perforation resistance (min.1100 N & each single value ≥ 950 N) non-metal insert: d=3.0mm Conical Nail.

SR | Slip resistance - on ceramic tile floor with glycerine.

LG | Ladder grip.

MONDOPOINT 11



"FLEXGRIP+" BI-DENSITY PU SOLE WITH SPECIAL HEEL COMPLIANT WITH THE REQUIREMENTS FOR LADDER GRIP (LG).

NEW

CE EN ISO 20345:2022

FLEXGRIP+

FELIX ESD S1PS SR FO LG

07538..GRVF



NEW

UPPER: perforated suede and microfiber reinforcements.
Additional 2nd color laces included.

LINING: breathable micro-perforated 3D fabric.

REMOVABLE INSOLE: antistatic PU with ergonomic thermoforming.

ANTI-PERFORATION INSOLE: made from zero-perforation ultralight textile fiber (PS - nail \varnothing 3.0 mm).

TOE CAP: non magnetic fiberglass, insulating, resistant to 200J.

SOLE: PU dual density with absorption of energy on the heel + LG.

SIZES: 35-48 (UK 2 1/2 -13)

COLTON ESD S1PS SR FO LG

07538..TAGI



NEW

UPPER: perforated suede and microfiber reinforcements.
Additional 2nd color laces included.

LINING: breathable micro-perforated 3D fabric.

REMOVABLE INSOLE: antistatic PU with ergonomic thermoforming.

ANTI-PERFORATION INSOLE: made from zero-perforation ultralight textile fiber (PS - nail \varnothing 3.0 mm).

TOE CAP: non magnetic fiberglass, insulating, resistant to 200J.

SOLE: PU dual density with absorption of energy on the heel + LG.

SIZES: 35-48 (UK 2 1/2 -13)

TEXAS ESD S1PS SR FO LG

07538..GSGF



UPPER: perforated suede and microfiber reinforcements.
Additional 2nd color laces included.

LINING: breathable micro-perforated 3D fabric.

REMOVABLE INSOLE: antistatic PU with ergonomic thermoforming.

ANTI-PERFORATION INSOLE: made from zero-perforation ultralight textile fiber (PS - nail \varnothing 3.0 mm).

TOE CAP: non magnetic fiberglass, insulating, resistant to 200J.

SOLE: PU dual density with absorption of energy on the heel + LG.

SIZES: 35-48 (UK 2 1/2 -13)

DETROIT ESD S1PS SR FO LG

07538..NRGS



UPPER: perforated suede and microfiber reinforcements.
Additional 2nd color laces included.

LINING: breathable micro-perforated 3D fabric.

REMOVABLE INSOLE: antistatic PU with ergonomic thermoforming.

ANTI-PERFORATION INSOLE: made from zero-perforation ultralight textile fiber (PS - nail \varnothing 3.0 mm).

TOE CAP: non magnetic fiberglass, insulating, resistant to 200J.

SOLE: PU dual density with absorption of energy on the heel + LG.

SIZES: 35-48 (UK 2 1/2 -13)

LINE INDY LINE

SAFETY FOOTWEAR COMPLIANT WITH THE NEW EN ISO 20345:2022, MADE OF ULTRA-BREATHABLE PERFORATED MESH, SUEDE AND MICROFIBER REINFORCEMENTS, "FLEXGRIP+" BI-DENSITY PU SOLE WITH SPECIAL HEEL COMPLIANT WITH THE REQUIREMENTS FOR LADDER GRIP (LG). COMFORTABLE AND ULTRA-BREATHABLE TO ALWAYS WORK EASILY.

Laminar profile to increase grip for SR test.
Profiles engraved for a better grip on stairs (LG - heelheight ≥ 10 mm).
Laminar profiles for greater slipping resistance.



"FLEXGRIP+" BI-DENSITY PU SOLE WITH SPECIAL HEEL COMPLIANT WITH THE REQUIREMENTS FOR LADDER GRIP (LG).



NEW

CE EN ISO 20345:2022



FLEXGRIP+

PS | Perforation resistance (min.1100 N & each single value ≥ 950 N) non-metal insert: d=3.0mm Conical Nail.

SR | Slip resistance - on ceramic tile floor with glycerine.

LG | Ladder grip.

P. 97

PATO **ESD** S1PS SR FO LG

07539..GRAF



NEW



UPPER:
ultra-breathable perforated mesh, suede and microfiber reinforcements.
Additional 2nd color laces included.
LINING:
breathable micro-perforated 3D fabric.
REMOVABLE INSOLE:
antistatic PU with ergonomic thermoforming.
ANTI-PERFORATION INSOLE:
made from zero-perforation ultralight textile fiber (PS - nail \varnothing 3.0 mm).
TOE CAP:
non magnetic fiberglass, insulating, resistant to 200J.
SOLE:
PU dual density with absorption of energy on the heel + LG.
SIZES:
35-48 (UK 2 1/2 -13)

SONOMA **ESD** S1PS SR FO LG

07539..GSVF



UPPER:
ultra-breathable perforated mesh, suede and microfiber reinforcements.
Additional 2nd color laces included.
LINING:
breathable micro-perforated 3D fabric.
REMOVABLE INSOLE:
antistatic PU with ergonomic thermoforming.
ANTI-PERFORATION INSOLE:
made from zero-perforation ultralight textile fiber (PS - nail \varnothing 3.0 mm).
TOE CAP:
non magnetic fiberglass, insulating, resistant to 200J.
SOLE:
PU dual density with absorption of energy on the heel + LG.
SIZES:
35-48 (UK 2 1/2 -13)

EDMONTON **ESD** S1PS SR FO LG

07539..TAGI



UPPER:
ultra-breathable perforated mesh, suede and microfiber reinforcements.
Additional 2nd color laces included.
LINING:
breathable micro-perforated 3D fabric.
REMOVABLE INSOLE:
antistatic PU with ergonomic thermoforming.
ANTI-PERFORATION INSOLE:
made from zero-perforation ultralight textile fiber (PS - nail \varnothing 3.0 mm).
TOE CAP:
non magnetic fiberglass, insulating, resistant to 200J.
SOLE:
PU dual density with absorption of energy on the heel + LG.
SIZES:
35-48 (UK 2 1/2 -13)

LINE INDY LINES



MONDOPOINT
11

NEW

CE EN ISO 20345:2022

SAFETY FOOTWEAR COMPLIANT WITH THE NEW EN ISO 20345:2022, MADE OF FINE WATER REPELLENT SUEDE LEATHER OR NUBUCK, "FLEXGRIP+" BI-DENSITY PU SOLE WITH SPECIAL HEEL COMPLIANT WITH THE REQUIREMENTS FOR LADDER GRIP (LG). LIGHTWEIGHT AND SUITABLE FOR ANY USE.

PS | Perforation resistance (min.1100 N & each single value 2950 N) non-metal insert: d=3.0mm Conical Nail.

SR | Slip resistance - on ceramic tile floor with glycerine.

LG | Ladder grip.

P. 97

Laminar profile to increase grip for SR test.

Profiles engraved for a better grip on stairs (LG - heelheight ≥ 10 mm).

Laminar profiles for greater slipping resistance.



"FLEXGRIP+" BI-DENSITY PU SOLE WITH SPECIAL HEEL COMPLIANT WITH THE REQUIREMENTS FOR LADDER GRIP (LG).

FLEXGRIP+



BALTIMORA ESD S3S SR FO LG

07537..BMGF



UPPER:
water repellent suede and microfiber reinforcements.
Additional 2nd color laces included.

LINING:
breathable micro-perforated 3D fabric.

REMOVABLE INSOLE:
antistatic PU with ergonomic thermoforming.

ANTI-PERFORATION INSOLE:
made from zero-perforation ultralight textile fiber (PS - nail Ø 3.0 mm).

TOE CAP:
non magnetic fiberglass, insulating, resistant to 200J.

SOLE:
PU dual density with absorption of energy on the heel + LG.

SIZES:
35-48 (UK 2 ½ -13)

RICHMOND ESD S3S SR FO LG

07541..BMGF



UPPER:
water repellent nubuck and microfiber reinforcements.
Additional 2nd color laces included.

LINING:
breathable micro-perforated 3D fabric.

REMOVABLE INSOLE:
antistatic PU with ergonomic thermoforming.

ANTI-PERFORATION INSOLE:
made from zero-perforation ultralight textile fiber (PS - nail Ø 3.0 mm).

TOE CAP:
non magnetic fiberglass, insulating, resistant to 200J.

SOLE:
PU dual density with absorption of energy on the heel + LG.

SIZES:
35-48 (UK 2 ½ -13)

CHARLOTTE ESD S3S SR FO LG

07537..GSAZ



UPPER:
water repellent suede and microfiber reinforcements.
Additional 2nd color laces included.

LINING:
breathable micro-perforated 3D fabric.

REMOVABLE INSOLE:
antistatic PU with ergonomic thermoforming.

ANTI-PERFORATION INSOLE:
made from zero-perforation ultralight textile fiber (PS - nail Ø 3.0 mm).

TOE CAP:
non magnetic fiberglass, insulating, resistant to 200J.

SOLE:
PU dual density with absorption of energy on the heel + LG.

SIZES:
35-48 (UK 2 ½ -13)

DANICA ESD S3S SR FO LG

07537..GRFU



UPPER:
water repellent suede and microfiber reinforcements.
Additional 2nd color laces included.

LINING:
breathable micro-perforated 3D fabric.

REMOVABLE INSOLE:
antistatic PU with ergonomic thermoforming.

ANTI-PERFORATION INSOLE:
made from zero-perforation ultralight textile fiber (PS - nail Ø 3.0 mm).

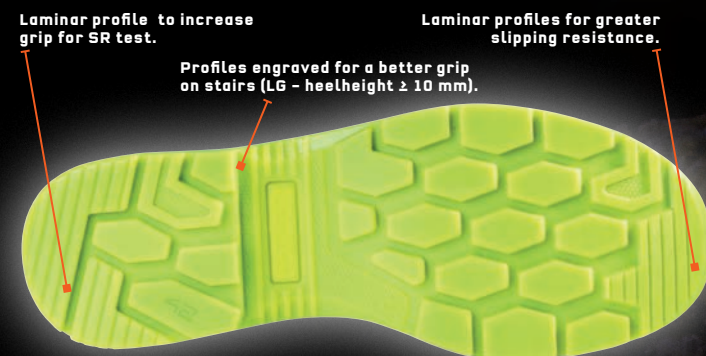
TOE CAP:
non magnetic fiberglass, insulating, resistant to 200J.

SOLE:
PU dual density with absorption of energy on the heel + LG.

SIZES:
35-43 (UK 2 ½ -9)

NEW LINE INDY NUBUK LINE

SAFETY FOOTWEAR COMPLIANT WITH THE NEW **EN ISO 20345:2022**,
MADE OF **SOFT TUMBLED NUBUCK**, "**FLEXGRIP+**" **BI-DENSITY PU** SOLE
WITH SPECIAL HEEL COMPLIANT WITH THE REQUIREMENTS
FOR LADDER GRIP - LG.
ELEGANT, SOFT AND RESISTANT, PERFECT IN ANY CONDITION.



"**FLEXGRIP+**" **BI-DENSITY PU** SOLE WITH
SPECIAL HEEL COMPLIANT WITH THE
REQUIREMENTS FOR LADDER GRIP (LG).



NEW
CE EN ISO 20345:2022



PS | Perforation resistance (min.1100 N & each single value ≥ 950 N) non-metal insert: d=3.0mm Conical Nail.

SR | Slip resistance - on ceramic tile floor with glycerine.

LG | Ladder grip.

P. 97



CONOR **ESD** S3S SR FO LG

07543..GSGF



UPPER:
water repellent nubuck
and microfiber reinforcements.
Additional 2nd color laces included.

LINING:
breathable micro-perforated 3D fabric.

REMOVABLE INSOLE:
antistatic PU with ergonomic thermoforming.

ANTI-PERFORATION INSOLE:
made from zero-perforation ultralight
textile fiber (PS - nail \varnothing 3.0 mm).

TOE CAP:
non magnetic fiberglass,
insulating, resistant to 200J.

SOLE:
PU dual density with absorption
of energy on the heel + LG.

SIZES:
35-48 (UK 2 1/2 -13)

JURI **ESD** S3S SR FO LG

07544..GSGF



UPPER:
water repellent nubuck
and microfiber reinforcements.
Additional 2nd color laces included.

LINING:
breathable micro-perforated 3D fabric.

REMOVABLE INSOLE:
antistatic PU with ergonomic thermoforming.

ANTI-PERFORATION INSOLE:
made from zero-perforation ultralight
textile fiber (PS - nail \varnothing 3.0 mm).

TOE CAP:
non magnetic fiberglass,
insulating, resistant to 200J.

SOLE:
PU dual density with absorption
of energy on the heel + LG.

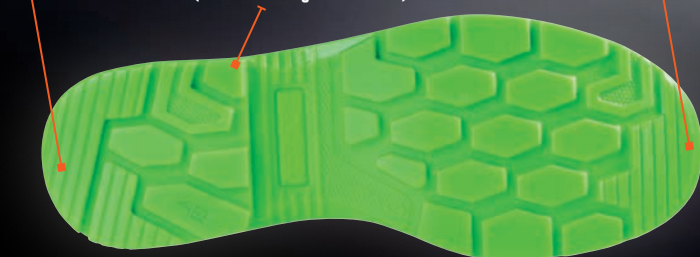
SIZES:
35-48 (UK 2 1/2 -13)

SAFETY FOOTWEAR COMPLIANT WITH THE NEW EN ISO 20345:2022, MADE OF SPECIAL REGENERATED ANTI-ABRASION MATERIAL SPARCO® FULL EFFICIENCY WITH HF REINFORCEMENT ON THE TOE, "FLEXGRIP+" BI-DENSITY PU SOLE WITH SPECIAL HEEL COMPLIANT WITH THE REQUIREMENTS FOR LADDER GRIP (LG), LIGHTWEIGHT, ENVIRONMENTALLY FRIENDLY AND RESISTANT FOR ANY WORK ENVIRONMENTS.

Laminar profile to increase grip for SR test.

Laminar profiles for greater slipping resistance.

Profiles engraved for a better grip on stairs (LG - heelheight ≥ 10 mm).



"FLEXGRIP+" BI-DENSITY PU SOLE WITH SPECIAL HEEL COMPLIANT WITH THE REQUIREMENTS FOR LADDER GRIP (LG).



NEW

CE EN ISO 20345:2022



FLEXGRIP+

PS | Perforation resistance (min.1100 N & each single value ≥950 N) non-metal insert: d=3.0mm Conical Nail.

SR | Slip resistance - on ceramic tile floor with glycerine.

LG | Ladder grip.

P. 97

S FULL EFFICIENCY
— FOR A SUSTAINABLE FUTURE —

Its attention to detail, care devoted to the choice of **sustainable materials** and its construction of models totally styled, designed and validated in Italy has allowed **SPARCO** to develop the **FULL EFFICIENCY** project, whose basic principles are:

- VIRTUOUS CIRCULAR PRODUCTION CYCLE
- ZERO WASTE TARGET
- CORPORATE SOCIAL RESPONSABILITY
- FULLY OWNED TECHNOLOGY

FORESTER **ESD** S3S SR FO LG

07540..NRVF



UPPER:
special regenerated anti-abrasion material Sparco® **FULL EFFICIENCY** with HF reinforcement on the toe.
Additional 2nd color laces included.

LINING:
breathable micro-perforated 3D fabric.

REMOVABLE INSOLE:
antistatic PU with ergonomic thermoforming.

ANTI-PERFORATION INSOLE:
made from zero-perforation ultralight textile fiber (PS - nail Ø 3.0 mm).

TOE CAP:
non magnetic fiberglass, insulating, resistant to 200J.

SOLE:
PU dual density with absorption of energy on the heel + LG.

SIZES:
35-48 (UK 2 ½ -13)

RANGER **ESD** S3S SR FO LG

07542..NRVF



UPPER:
special regenerated anti-abrasion material Sparco® **FULL EFFICIENCY** with HF reinforcement on the toe.
Additional 2nd color laces included.

LINING:
breathable micro-perforated 3D fabric.

REMOVABLE INSOLE:
antistatic PU with ergonomic thermoforming.

ANTI-PERFORATION INSOLE:
made from zero-perforation ultralight textile fiber (PS - nail Ø 3.0 mm).

TOE CAP:
non magnetic fiberglass, insulating, resistant to 200J.

SOLE:
PU dual density with absorption of energy on the heel + LG.

SIZES:
35-48 (UK 2 ½ -13)

LINE PRACTICE LINE

RUNNING-STYLE SAFETY FOOTWEAR MADE OF BREATHABLE MICRO-PERFORATED 3D FABRIC AND SCRATCH-RESISTANT MICROFIBRE. LIGHT AND BREATHABLE, PERFECT FOR INDOOR USE OR HOT WEATHER.

Laminar profiles to increase grip.

Laminar profiles for greater slipping resistance.

Profiles engraved for a better grip on the stairs.



ULTRA-FLEXIBLE SINGLE-DENSITY PU THAT INCREASES COMFORT AND REDUCES STRESS TO THE LOWER LIMBS AND THE SPINE.

PL | Perforation resistance (min.1100 N)
non-metal insert: d=4.5mm Conical Nail.



R-FLEX

SR | Slip resistance - on ceramic tile floor with glycerine.

P. 97

NEW

CE EN ISO 20345:2022



JOS ESD S1PL SR FO

07517..NRGF



UPPER:
breathable micro-perforated fabric and scratch-resistant microfibre with high abrasion resistance.

LINING:
breathable micro-perforated 3D fabric.

REMOVABLE INSOLE:
antistatic in PU with ergonomic thermoforming.

ANTI-PERFORATION INSOLE:
made from zero-perforation textile fibre.

TOE CAP:
non magnetic fibreglass, insulating, resistant to 200J.

SOLE:
single-density PU with energy absorption on the heel.

SIZES:
36-48 (UK 3 ½ -13)

NIGEL ESD S1PL SR FO

07517..NRNR



UPPER:
breathable micro-perforated fabric and scratch-resistant microfibre with high abrasion resistance.

LINING:
breathable micro-perforated 3D fabric.

REMOVABLE INSOLE:
antistatic in PU with ergonomic thermoforming.

ANTI-PERFORATION INSOLE:
made from zero-perforation textile fibre.

TOE CAP:
non magnetic fibreglass, insulating, resistant to 200J.

SOLE:
single-density PU with energy absorption on the heel.

SIZES:
36-48 (UK 3 ½ -13)

KEKE ESD S1PL SR FO

07517..NRVF



UPPER:
breathable micro-perforated fabric and scratch-resistant microfibre with high abrasion resistance.

LINING:
breathable micro-perforated 3D fabric.

REMOVABLE INSOLE:
antistatic in PU with ergonomic thermoforming.

ANTI-PERFORATION INSOLE:
made from zero-perforation textile fibre.

TOE CAP:
non magnetic fibreglass, insulating, resistant to 200J.

SOLE:
single-density PU with energy absorption on the heel.

SIZES:
36-48 (UK 3 ½ -13)

NELSON ESD S1PL SR FO

07517..NRAZ



UPPER:
breathable micro-perforated fabric and scratch-resistant microfibre with high abrasion resistance.

LINING:
breathable micro-perforated 3D fabric.

REMOVABLE INSOLE:
antistatic in PU with ergonomic thermoforming.

ANTI-PERFORATION INSOLE:
made from zero-perforation textile fibre.

TOE CAP:
non magnetic fibreglass, insulating, resistant to 200J.

SOLE:
single-density PU with energy absorption on the heel.

SIZES:
36-48 (UK 3 ½ -13)

JODY ESD S1PL SR FO

07517..NRFU



UPPER:
breathable micro-perforated fabric and scratch-resistant microfibre with high abrasion resistance.

LINING:
breathable micro-perforated 3D fabric.

REMOVABLE INSOLE:
antistatic in PU with ergonomic thermoforming.

ANTI-PERFORATION INSOLE:
made from zero-perforation textile fibre.

TOE CAP:
non magnetic fibreglass, insulating, resistant to 200J.

SOLE:
single-density PU with energy absorption on the heel.

SIZES:
36-43 (UK 3 ½ -9)



LINE NITRO LINE

RUNNING-STYLE SAFETY FOOTWEAR

MADE OF WATER-REPELLENT MICROFIBRE AND SUEDE,
IDEAL FOR BOTH INDOOR AND OUTDOOR USE.



ULTRA-FLEXIBLE SINGLE-DENSITY PU
THAT INCREASES COMFORT
AND REDUCES STRESS TO THE LOWER
LIMBS AND THE SPINE.

PL | Perforation resistance (min.1100 N)
non-metal insert: d=4.5mm Conical Nail.



R-FLEX

SR | Slip resistance - on ceramic tile floor
with glycerine.

P. 97

NEW

CE EN ISO 20345:2022

DIDIER ESD S3L SR FO

07522..NRGR



UPPER:
high-quality water-repellent microfibre.
LINING:
breathable micro-perforated 3D fabric.
REMOVABLE INSOLE:
antistatic in PU with
ergonomic thermoforming.
ANTI-PERFORATION INSOLE:
made from zero-perforation textile fibre.
TOE CAP:
non magnetic fibreglass,
insulating, resistant to 200J.
SOLE:
single-density PU with energy
absorption on the heel.
SIZES:
36-48 (UK 3 ½ -13)

MARCUS ESD S3L SR FO

07522..RSNR



UPPER:
high-quality water-repellent microfibre and suede.
LINING:
breathable micro-perforated 3D fabric.
REMOVABLE INSOLE:
antistatic in PU with
ergonomic thermoforming.
ANTI-PERFORATION INSOLE:
made from zero-perforation textile fibre.
TOE CAP:
non magnetic fibreglass,
insulating, resistant to 200J.
SOLE:
single-density PU with energy
absorption on the heel.
SIZES:
36-48 (UK 3 ½ -13)

PETTER ESD S3L SR FO

07522..NRAZ



UPPER:
high-quality water-repellent microfibre.
LINING:
breathable micro-perforated 3D fabric.
REMOVABLE INSOLE:
antistatic in PU with
ergonomic thermoforming.
ANTI-PERFORATION INSOLE:
made from zero-perforation textile fibre.
TOE CAP:
non magnetic fibreglass,
insulating, resistant to 200J.
SOLE:
single-density PU with energy
absorption on the heel.
SIZES:
36-48 (UK 3 ½ -13)

LINE NITRO LINE

RUNNING-STYLE SAFETY FOOTWEAR

MADE OF WATER-REPELLENT LEATHER,
IDEAL FOR BOTH INDOOR AND OUTDOOR USE.

Laminar profiles
to increase grip.

Laminar profiles for greater
slipping resistance.

Profiles engraved
for a better grip on the stairs.



**ULTRA-FLEXIBLE SINGLE-DENSITY PU
THAT INCREASES COMFORT AND REDUCES
STRESS TO THE LOWER LIMBS
AND THE SPINE.**

PL | Perforation resistance (min.1100 N)
non-metal insert: d=4.5mm Conical Nail.



R-FLEX

SR | Slip resistance - on ceramic tile floor
with glycerine.

P. 97

NEW

CE EN ISO 20345:2022

MONDOPOINT
11



HANNU **ESD** S3L SR FO

07522..BIBI



UPPER:
high-quality water-repellent smooth leather.

LINING:
breathable micro-perforated 3D fabric.

REMOVABLE INSOLE:
antistatic in PU with ergonomic
thermoforming.

ANTI-PERFORATION INSOLE:
made from zero-perforation textile fibre.

TOE CAP:
non magnetic fibreglass,
insulating, resistant to 200J.

SOLE:
single-density PU with energy
absorption on the heel.

SIZES:
36-48 (UK 3 ½ -13)

MIKKO **ESD** S3L SR FO

07522..NRNR



UPPER:
high-quality water-repellent smooth leather.

LINING:
breathable micro-perforated 3D fabric.

REMOVABLE INSOLE:
antistatic in PU with ergonomic
thermoforming.

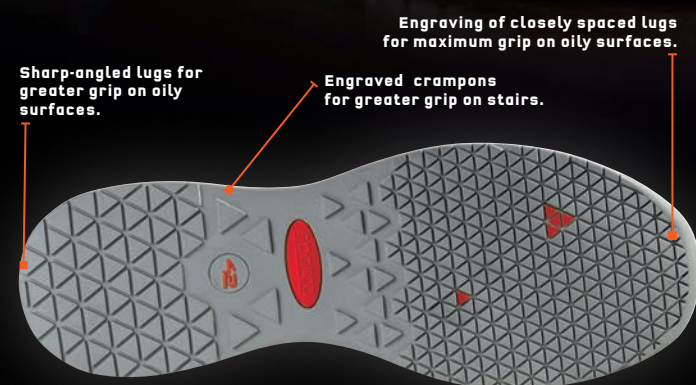
ANTI-PERFORATION INSOLE:
made from zero-perforation textile fibre.

TOE CAP:
non magnetic fibreglass,
insulating, resistant to 200J.

SOLE:
single-density PU with energy
absorption on the heel.

SIZES:
36-48 (UK 3 ½ -13)

SAFETY FOOTWEAR MADE OF BREATHABLE JACQUARD FABRIC AND REINFORCEMENT IN PU FILM COATED ON THE TOE, IDEAL FOR INDOOR USE.



ULTRALIGHT EVA MIDSOLE AND NITRILE RUBBER TREAD WITH ENERGY ABSORPTION ON THE HEEL.

ALBERT ESD S1P SRC

07526..NRRS



UPPER:
Ultra-breathable jacquard weave with PU film reinforcement coating on the toe.

LINING:
breathable micro-perforated 3D fabric.

REMOVABLE INSOLE:
antistatic in PU with ergonomic thermoforming.

ANTI-PERFORATION INSOLE:
made from zero-perforation textile fibre.

TOE CAP:
non magnetic fibreglass, insulating, resistant to 200J.

SOLE:
EVA midsole and nitrile rubber tread with energy absorption on heel.

SIZES:
35-46 (UK 2 ½ - 11 ½)

RICARD ESD S1P SRC

07526..NRAZ



UPPER:
Ultra-breathable jacquard weave with PU film reinforcement coating on the toe.

LINING:
breathable micro-perforated 3D fabric.

REMOVABLE INSOLE:
antistatic in PU with ergonomic thermoforming.

ANTI-PERFORATION INSOLE:
made from zero-perforation textile fibre.

TOE CAP:
non magnetic fibreglass, insulating, resistant to 200J.

SOLE:
EVA midsole and nitrile rubber tread with energy absorption on heel.

SIZES:
35-46 (UK 2 ½ - 11 ½)

NURBURG ESD S1P SRC

07526..NRGF



UPPER:
Ultra-breathable jacquard weave with PU film reinforcement coating on the toe.

LINING:
breathable micro-perforated 3D fabric.

REMOVABLE INSOLE:
antistatic in PU with ergonomic thermoforming.

ANTI-PERFORATION INSOLE:
made from zero-perforation textile fibre.

TOE CAP:
non magnetic fibreglass, insulating, resistant to 200J.

SOLE:
EVA midsole and nitrile rubber tread with energy absorption on heel.

SIZES:
35-46 (UK 2 ½ - 11 ½)

LINE ALLROAD LINE

SAFETY FOOTWEAR MADE OF FINE NUBUCK, SUEDE LEATHER OR MICROFIBRE WATER-REPELLENT WITH NYLON COLLAR. PHYLON MIDSOLE WITH CROSSGRIP HRO RUBBER TREAD. LIGHT, PRECIOUS AND DURABLE, THEY ARE SUITABLE FOR BOTH OUTDOOR AND INDOOR USE.



ULTRALIGHT SOLE WITH PHYLON* MIDSOLE AND CROSSGRIP RUBBER TREAD. IT FEATURES AN IDEAL SCULPTURE FOR MAXIMUM GRIP AND STABILISATION ON GRAVELLY, MUDDY AND SNOW-COVERED SURFACES. LIGHT AND COMFORTABLE, IT ABSORBS VIBRATIONS AND PREVENTS DAMAGE TO THE LOWER LIMBS AND THE SPINE.

NEW

CE EN ISO 20345:2022



* Phylon is a light and resistant plastic made with EVA foam obtained by injection of compressed air.

SOCHI ESD S3S SR FO HRO

07528..BMGF



UPPER:
nylon and water-repellent microfibre.

LINING:
breathable micro-perforated 3D fabric.

REMOVABLE INSOLE:
antistatic in PU with ergonomic thermoforming.

ANTI-PERFORATION INSOLE:
made from zero-perforation textile fibre.

TOE CAP:
non magnetic fibreglass, insulating, resistant to 200J.

SOLE:
phylon + nitrile rubber with energy absorption on the heel.

SIZES:
38-48 (UK 5 - 13)

MOTEGI ESD S3S SR FO HRO

07529..NRGF



UPPER:
nylon and water-repellent microfibre.

LINING:
breathable micro-perforated 3D fabric.

REMOVABLE INSOLE:
antistatic in PU with ergonomic thermoforming.

ANTI-PERFORATION INSOLE:
made from zero-perforation textile fibre.

TOE CAP:
non magnetic fibreglass, insulating, resistant to 200J.

SOLE:
phylon + HRO nitrile rubber with energy absorption on the heel.

SIZES:
38-48 (UK 5 - 13)

STIRIA ESD S3S SR FO HRO

07528..NRNR



UPPER:
nylon and water-repellent microfibre.

LINING:
breathable micro-perforated 3D fabric.

REMOVABLE INSOLE:
antistatic in PU with ergonomic thermoforming.

ANTI-PERFORATION INSOLE:
made from zero-perforation textile fibre.

TOE CAP:
non magnetic fibreglass, insulating, resistant to 200J.

SOLE:
phylon + nitrile rubber with energy absorption on the heel.

SIZES:
38-48 (UK 5 - 13)

OKAYAMA ESD S3S SR FO HRO

07529..NRNR



UPPER:
nylon and water-repellent microfibre.

LINING:
breathable micro-perforated 3D fabric.

REMOVABLE INSOLE:
antistatic in PU with ergonomic thermoforming.

ANTI-PERFORATION INSOLE:
made from zero-perforation textile fibre.

TOE CAP:
non magnetic fibreglass, insulating, resistant to 200J.

SOLE:
phylon + nitrile rubber with energy absorption on the heel.

SIZES:
38-48 (UK 5 - 13)

BAKU ESD S3S SR FO HRO

07528..NRVF



UPPER:
nylon and water-repellent microfibre.

LINING:
breathable micro-perforated 3D fabric.

REMOVABLE INSOLE:
antistatic in PU with ergonomic thermoforming.

ANTI-PERFORATION INSOLE:
made from zero-perforation textile fibre.

TOE CAP:
non magnetic fibreglass, insulating, resistant to 200J.

SOLE:
phylon + nitrile rubber with energy absorption on the heel.

SIZES:
38-48 (UK 5 - 13)

LEAP ESD S3S SR FO HRO

07529..GSVF



UPPER:
nubuck and water-repellent suede, nylon collar.

LINING:
breathable micro-perforated 3D fabric.

REMOVABLE INSOLE:
antistatic PU with ergonomic thermoforming.

ANTI-PERFORATION INSOLE:
made from zero-perforation textile fibre.

TOE CAP:
non magnetic fibreglass, insulating, resistant to 200J.

SOLE:
phylon + HRO nitrile rubber with energy absorption on the heel.

SIZES:
38-48 (UK 5 - 13)

ROC ESD S3S SR FO HRO

07528..TAGI



UPPER:
nubuck and water-repellent suede, nylon collar.

LINING:
breathable micro-perforated 3D fabric.

REMOVABLE INSOLE:
antistatic PU with ergonomic thermoforming.

ANTI-PERFORATION INSOLE:
made from zero-perforation textile fibre.

TOE CAP:
non magnetic fibreglass, insulating, resistant to 200J.

SOLE:
phylon + HRO nitrile rubber with energy absorption on the heel.

SIZES:
38-48 (UK 5 - 13)

STONE ESD S3S SR FO HRO

07529..TAGI



UPPER:
nubuck and water-repellent suede, nylon collar.

LINING:
breathable micro-perforated 3D fabric.

REMOVABLE INSOLE:
antistatic PU with ergonomic thermoforming.

ANTI-PERFORATION INSOLE:
made from zero-perforation textile fibre.

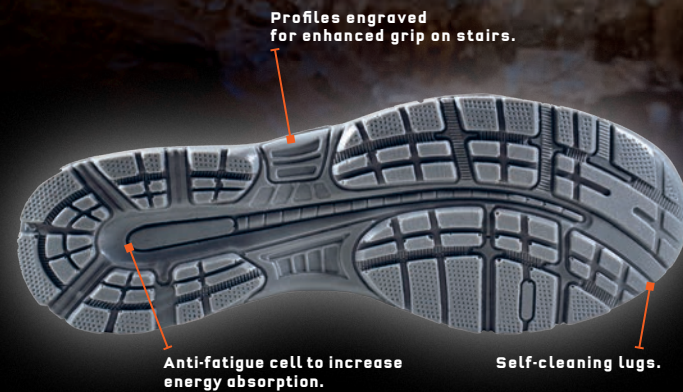
TOE CAP:
non magnetic fibreglass, insulating, resistant to 200J.

SOLE:
phylon + HRO nitrile rubber with energy absorption on the heel.

SIZES:
38-48 (UK 5 - 13)

LINE ARCTIC LINE

SAFETY ANKLE BOOTS WITH SPECIAL DRY RESPIRATION SYSTEM (**DRS**) WATER-RESISTANT MEMBRANE, MADE OF HIGH-QUALITY WATER-REPELLENT SUEDE AND MICRO-INJECTED INSERTS. HARD-WEARING AND BREATHABLE, IT IS IDEAL IN PARTICULARLY DAMP OR WET ENVIRONMENTS.



SOLE IN DUAL-DENSITY POLYURETHANE WITH ENERGY ABSORPTION ON THE HEEL.



CE EN ISO 20345:2011

ARCTIC S3 WR SRC

07533..NRAZ



UPPER:
high-quality water-repellent suede, micro-injected inserts and special DRS WATER-RESISTANT membrane.

LINING:
breathable micro-perforated 3D fabric.

REMOVABLE INSOLE:
antistatic in PU.

ANTI-PERFORATION INSOLE:
made from zero-perforation textile fibre.

TOE CAP:
fibreglass, non-magnetic, insulating, resistant to 200J.

SOLE:
dual-density polyurethane with energy absorption on the heel.

SIZES:
36-47 (UK 3 1/2 -12)

Footwear designed for all those who are forced to work in environments characterised by a high presence of water. WR footwear is in fact made with materials and techniques that prevent the entry of water while guaranteeing excellent breathability and therefore perfect hygrothermal comfort.

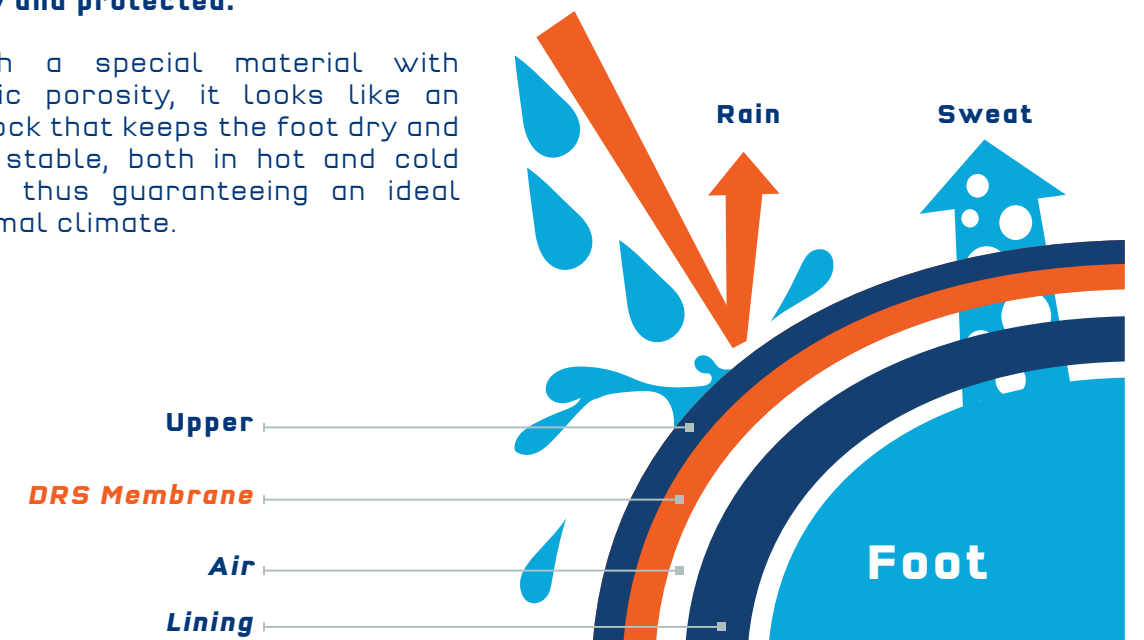
WALK TEST
(according to EN ISO 20345:2011)
1,000 steps (about 20 min.) in a tank containing 3 cm of water, the wet internal surface must be $\leq 3 \text{ cm}^2$.



DRS MEMBRANE BY SPARCO TEAMWORK (DRY RESPIRATION SYSTEM):

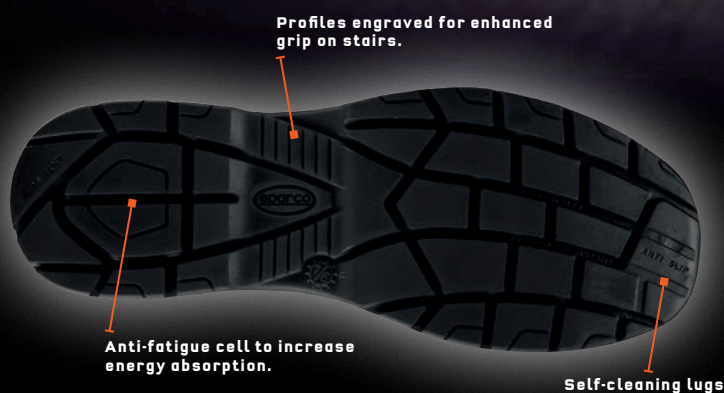
The special **DRS** membrane by **SPARCO TEAMWORK** ensures maximum breathability and comfort while preventing water from penetrating into the upper, leaving the feet always dry and protected.

Made with a special material with microscopic porosity, it looks like an invisible sock that keeps the foot dry and thermally stable, both in hot and cold conditions, thus guaranteeing an ideal hygrothermal climate.



LINE CHALLENGE LINE

**SAFETY FOOTWEAR MADE OF NYLON AND SUEDE.
DURABLE AND SUITABLE FOR ANY CONDITION
(OUTDOOR AND INDOOR).**



**SOLE IN DUAL-DENSITY
POLYURETHANE WITH ENERGY
ABSORPTION ON THE HEEL.**



HINWIL ESD S1P SRC

07519..NRNR



UPPER:
abrasion resistant fine suede.

LINING:
breathable micro-perforated 3D fabric.

REMOVABLE INSOLE:
antistatic in PU

ANTI-PERFORATION INSOLE:
made from zero-perforation textile fibre.

TOE CAP:
non magnetic fibreglass, insulating,
resistant to 200J.

SOLE:
dual-density polyurethane
with energy absorption on the heel.

SIZES:
36-49 (UK 3 1/2 -14)

WOKING ESD S1P SRC

07519..NRRS



UPPER:
abrasion resistant fine suede.

LINING:
breathable micro-perforated 3D fabric.

REMOVABLE INSOLE:
antistatic in PU

ANTI-PERFORATION INSOLE:
made from zero-perforation textile fibre.

TOE CAP:
non magnetic fibreglass, insulating,
resistant to 200J.

SOLE:
dual-density polyurethane
with energy absorption on the heel.

SIZES:
36-48 (UK 3 1/2 -13)

ZELTWEG ESD S3 SRC

07524..NRNR



UPPER:
water penetration-resistant nylon and suede.

LINING:
breathable micro-perforated 3D fabric.

REMOVABLE INSOLE:
antistatic in PU

ANTI-PERFORATION INSOLE:
made from zero-perforation textile fibre.

TOE CAP:
non magnetic fibreglass, insulating,
resistant to 200J.

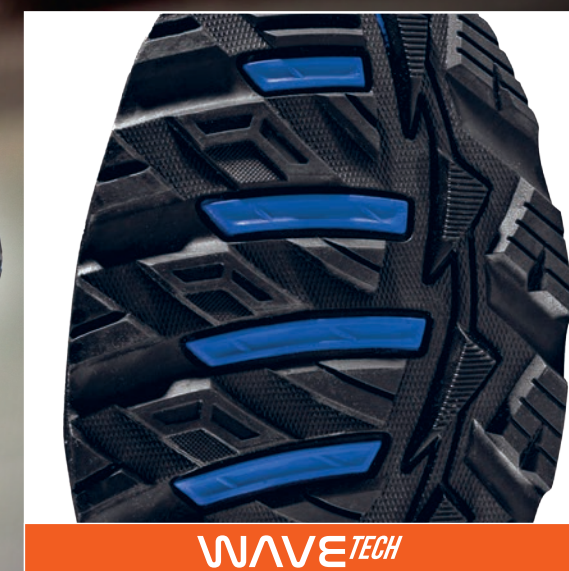
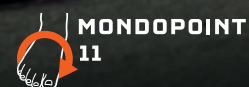
SOLE:
dual-density polyurethane
with energy absorption on the heel.

SIZES:
36-48 (UK 3 1/2 -13)

LINE TORQUE LINE

ULTRALIGHT, FLEXIBLE AND BREATHABLE OCCUPATIONAL FOOTWEAR. DESIGNED FOR WORK WHERE THE RISK ANALYSIS REQUIRES **NEITHER A PROTECTIVE TOE NOR AN ANTI-PERFORATION PLATE, IN COMPLIANCE WITH THE SAFETY AND HEALTH REQUIREMENTS** OF THE EN ISO 20347:2012 STANDARD - CE MARKING, THEY GIVE THE USER MAXIMUM COMFORT AND SPORTY STYLE.

CE EN ISO 20347:2012



ULTRALIGHT SOLE WITH PHYLON* MIDSOLE AND RUBBER TREAD.

* Phylon is a light and resistant plastic made with EVA foam obtained by injection of compressed air.

PALMA 01 FO SRA

001289..NRNR



UPPER:
breathable micro-perforated fabric,
micro-injected reinforcement
on ultra-abrasion-resistant toe.

LINING:
breathable micro-perforated 3D fabric.

INSOLE:
breathable in memory foam.

SOLE:
phylon midsole and nitrile
rubber tread.

SIZES:
37-47 (UK 4 ½ - 12)

DURANGO 01 FO SRA

001289..NRAZ



UPPER:
breathable micro-perforated fabric,
micro-injected reinforcement
on ultra-abrasion-resistant toe.

LINING:
breathable micro-perforated 3D fabric.

INSOLE:
breathable in memory foam.

SOLE:
phylon midsole and nitrile
rubber tread.

SIZES:
37-47 (UK 4 ½ - 12)

LINE TORQUE MARTINI RACING LIVRE

ULTRALIGHT, FLEXIBLE AND BREATHABLE OCCUPATIONAL FOOTWEAR IN MARTINI RACING LIVREY. DESIGNED FOR WORK WHERE THE RISK ANALYSIS REQUIRES NEITHER A PROTECTIVE TOE NOR AN ANTI-PERFORATION PLATE, TO GIVE THE USER MAXIMUM COMFORT IN COMPLIANCE WITH THE SAFETY AND HEALTH REQUIREMENTS OF THE EN ISO 20347:2012 STANDARD - CE MARKING

**MARTINI
RACING**

OFFICIAL LICENSED PRODUCTS



ULTRALIGHT SOLE WITH PHYLON* MIDSOLE AND RUBBER TREAD.

* Phylon is a light and resistant plastic made with EVA foam obtained by injection of compressed air.



TWISTTECH

CE EN ISO 20347:2012

MIKI 01 FO SRA

01289MR..BM



UPPER:
breathable micro-perforated fabric, micro-injected reinforcement on ultra-abrasion-resistant toe.

LINING:
breathable micro-perforated 3D fabric.

INSOLE:
breathable in memory foam.

SOLE:
phylon midsole and nitrile rubber tread.

SIZES:
37-47 (UK 4 1/2 - 12)

HOODIE REPLICA **MARTINI RACING**

01279MR..



SPECIFICATIONS:
Hooded sweatshirt made with an ultra-soft cotton blend featuring the iconic Martini Racing livery. The logo patches and stripes are fully embroidered.

MATERIAL:
65% cotton
35% polyester 300 gr. m²
hood lined in soft jersey.

SIZES:
S-3XL

Visit
sparco-official.com



WORKWEAR AND
WORKWEAR
WORKWEAR

WADWWE AD TECH SOFT-SHELL WORKWEAR



NEW

CE EN ISO 13688:2022

CAT.1

YORK
BLACK/ORANGE

02412NRAF..

NEW

**TECH SOFT-SHELL****WEIGHT:** 330 gr/m²**COMPOSITION:**Outer 93% polyester, 7% spandex
Inside 100% polyester (polar fleece)**SIZES:** XS-3XL**SPECIFICATIONS:**

- Reinforcement inserts on shoulders and sleeves made of anti-abrasion material.
- High visibility reflective strips on the sleeves.
- Removable and foldable hood with double adjustment.
- Elasticated cuffs.
- Compliant to the EN ISO 13688:2022 - CAT.1.

YORK
GREY/YELLOW

02412GSGF..

SIZES: XS-3XLYORK
NAVY/ORANGE

02412BMAF..

SIZES: XS-3XLYORK
BLACK/GREY

02412NRGS..

SIZES: XS-3XLYORK
NAVY/ROYAL

02412BMAZ..

SIZES: XS-3XL

WORKWEAR AD TECH LIGHT-SHELL WORKWEAR



NEW

CE EN ISO 13688:2022

CAT.1

AUSTIN
BLACK/ORANGE

02413NRAF..

NEW



TECH LIGHT-SHELL

WEIGHT: 240 g/m²

COMPOSITION: 90% nylon - 10% spandex

SIZES: XS-3XL

SPECIFICATIONS:

- Reinforced sleeves with anti-abrasion inserts and high visibility reflective strips.
- Coated and waterproof central zip.
- Pocket with zip closure and high visibility puller on the left sleeve.
- Compliant to the EN ISO 13688:2022 - CAT.1.

AUSTIN
GREY/YELLOW

02413GSGF..

SIZES: XS-3XL

AUSTIN
NAVY/ORANGE

02413BMAF..

SIZES: XS-3XL

AUSTIN
BLACK/GREY

02413NRGS..

SIZES: XS-3XL

AUSTIN
NAVY/ROYAL

02413BMAZ..

SIZES: XS-3XL



WORKWEAR AD TECH HOODED FULL ZIP WORKWEAR



NEW

CE EN ISO 13688:2022

CAT.1

COLORADO
BLACK/ORANGE

02414NRAF..

NEW



TECH HOODED FULL ZIP SWEATSHIRT

WEIGHT: 280 gr/m²

COMPOSITION: 80% cotton - 20% polyester

SIZES: XS-3XL

SPECIFICATIONS:

- Reinforced sleeves with anti-abrasion inserts and high visibility reflective strips.
- Reinforcement inserts on the shoulders.
- Integrated adjustable hood with colored lining.
- Compliant to the EN ISO 13688:2022 - CAT.1.

COLORADO
GREY/YELLOW

02414GSGF..

SIZES: XS-3XL

COLORADO
NAVY/ORANGE

02414BMAF..

SIZES: XS-3XL

COLORADO
BLACK/GREY

02414NRGS..

SIZES: XS-3XL

COLORADO
NAVY/ROYAL

02414BMAZ..

SIZES: XS-3XL



NEW

WORKWEAR

TECH FULL ZIP

WORKWEAR



NEW

CE EN ISO 13688:2022

CAT.1

ALABAMA
BLACK/ORANGE

02429NRAF..

NEW



TECH FULL ZIP SWEATSHIRT

WEIGHT: 260 gr/m²

COMPOSITION: 80% cotton - 20% polyester

SIZES: XS-3XL

SPECIFICATIONS:

- Reinforced sleeves with anti-abrasion inserts and high visibility reflective strips.
- Reinforcement inserts on the trapezoid and shoulders.
- Ultra-smooth central zipper.
- Side and sleeve pockets with reverse zip closure.
- Compliant to the EN ISO 13688:2022 - CAT.1.

ALABAMA
GREY/YELLOW

02429GSGF..

NEW



SIZES: XS-3XL

ALABAMA
NAVY/ORANGE

02429BMAF..

NEW



SIZES: XS-3XL

ALABAMA
BLACK/GREY

02429NRGS..

NEW



SIZES: XS-3XL

ALABAMA
NAVY/ROYAL

02429BMAZ..

NEW



SIZES: XS-3XL

WORKWEAR TECH LIGHT VEST WORKWEAR



NEW

CE EN ISO 13688:2022

CAT.1

ILLINOIS
BLACK/ORANGE

02419NRAF..

NEW

**TECH LIGHT VEST****WEIGHT:** 240 gr/m²**COMPOSITION:** 90% nylon - 10% spandex**SIZES:** XS-3XL**SPECIFICATIONS:**

- Reinforcement inserts on the shoulders made of anti-abrasion material.
- Coated and waterproof central zip.
- High visibility reflective strips on the back.
- **Compliant to the EN ISO 13688:2022 - CAT.1.**

ILLINOIS
GREY/YELLOW

02419GSGF..

SIZES: XS-3XLILLINOIS
NAVY/ORANGE

02419BMAF..

SIZES: XS-3XLILLINOIS
BLACK/GREY

02419NRGS..

SIZES: XS-3XLILLINOIS
NAVY/ROYAL

02419BMAZ..

SIZES: XS-3XL

WADWWE A D TECH POLO WURKWEAR



NEW

CE EN ISO 13688:2022

CAT.1

TOLEDO
BLACK/ORANGE

02415NRAF..

NEW

**TECH POLO****WEIGHT:** 180 gr/m²**COMPOSITION:** 65% cotton,
35% polyester with piqué effect**SIZES:** XS - 3XL**SPECIFICATIONS:**

- High visibility reflective sleeve strips.
- Contrasting inserts under sleeves and collar.
- Reinforced shoulder inserts.
- Compliant to the EN ISO 13688:2022 - CAT.1.

TOLEDO
GREY/YELLOW

02415GSGF..

SIZES: XS-3XL

TOLEDO
NAVY/ORANGE

02415BMAF..

SIZES: XS-3XL

TOLEDO
BLACK/GREY

02415NRGS..

SIZES: XS-3XL

TOLEDO
NAVY/ROYAL

02415BMAZ..

SIZES: XS-3XL



WORKWEAR AD TECH T-SHIRT WORKWEAR



NEW

CE EN ISO 13688:2022

CAT.1

TUCSON
BLACK/ORANGE

02416NRAF..

NEW

**TECH T-SHIRT****WEIGHT:** 170 gr/m²**COMPOSITION:** 50% cotton,
50% polyester piqué effect**SIZES:** XS - 3XL**SPECIFICATIONS:**

- High visibility reflective sleeve strips.
- Reinforced shoulder inserts.
- Contrasting inserts under the sleeves and at the waist.
- Compliant to the EN ISO 13688:2022 - CAT.1.

TUCSON
GREY/YELLOW

02416GSGF..

SIZES: XS-3XL

TUCSON
NAVY/ORANGE

02416BMAF..

SIZES: XS-3XL

TUCSON
BLACK/GREY

02416NRGS..

SIZES: XS-3XL

TUCSON
NAVY/ROYAL

02416BMAZ..

SIZES: XS-3XL



WORKWEAR TECH TROUSERS WORKWEAR

NEW

CE EN ISO 13688:2022

CAT.1

OREGON
BLACK/ORANGE

02417NRAF..

NEW

**TECH TROUSERS****WEIGHT:** 240 gr/m²**COMPOSITION:** 90% nylon - 10% spandex**SIZES:** XS-3XL**SPECIFICATIONS:**

- Anti-abrasion reinforcements on the knees.
- Zip and button closure.
- Hidden side pocket with zip closure.
- Compliant to the EN ISO 13688:2022 - CAT.1.

OREGON
GREY/YELLOW

02417GSGF..

SIZES: XS-3XLOREGON
NAVY/ORANGE

02417BMAF..

SIZES: XS-3XLOREGON
BLACK/GREY

02417NRGS..

SIZES: XS-3XLOREGON
BLACK/ROYAL

02417NRAZ..

SIZES: XS-3XL

NEW

WODWWE AD TECH LIGHT TROUSERS WORKWEAR



NEW

CE EN ISO 13688:2022

CAT.1

KANSAS
BLACK/ORANGE

02425NRAF..

NEW



TECH LIGHT TROUSERS

WEIGHT: 170 gr/m²

COMPOSITION: 90% nylon - 10% spandex

SIZES: XS-3XL

SPECIFICATIONS:

- Anti-abrasion reinforcements on the knees.
- Zip and button closure.
- Hidden side pocket with zip closure.
- Compliant to the EN ISO 13688:2022 - CAT.1.

KANSAS
GREY/YELLOW

02425GSGF..

NEW



SIZES: XS-3XL

KANSAS
NAVY/ORANGE

02425BMAF..

NEW



SIZES: XS-3XL

KANSAS
BLACK/GREY

02425NRGS..

NEW



SIZES: XS-3XL

KANSAS
BLACK/ROYAL

02425NRAZ..

NEW



SIZES: XS-3XL

NEW

WORLDWIDE AD TECH DENIM WORKWEAR



NEW

CE EN ISO 13688:2022

CAT.1

DALLAS

02430BS..

NEW

**TECH DENIM JEANS****WEIGHT:** 240 gr/m²**COMPOSITION:** 98% cotton - 10% spandex**SIZES:** XS-3XL**SPECIFICATIONS:**

- Ergonomic construction to facilitate knee movement.
- Tool ring on side pocket.
- Elasticated waist.
- Embroidered details.
- **Compliant to the EN ISO 13688:2022 - CAT.1.**



WORKWEAR TECH SHORTS WORKWEAR



NEW

CE EN ISO 13688:2022

CAT.1

ATLANTA
BLACK/ORANGE

02418NRAF..

NEW

**TECH SHORTS****WEIGHT:** 240 gr/m²**COMPOSITION:** 90% nylon - 10% spandex**SIZES:** XS-3XL**SPECIFICATIONS:**

- Zip and button closure.
- Hidden side pocket with zip closure.
- Badge holder ring on the front left belt loop.
- High visibility reflective strips.
- Compliant to the EN ISO 13688:2022 - CAT.1.

ATLANTA
GREY/YELLOW

02418GSGF..

SIZES: XS-3XLATLANTA
NAVY/ORANGE

02418BMAF..

SIZES: XS-3XLATLANTA
BLACK/GREY

02418NRGS..

SIZES: XS-3XLATLANTA
BLACK/ROYAL

02418NRAZ..

SIZES: XS-3XL

NEW WORKWEAR
TECH LIGHT SHORTS
 WORKWEAR



NEW

CE EN ISO 13688:2022

CAT.1

LAREDO
 BLACK/ORANGE

02428NRAF..

NEW



TECH LIGHT SHORTS

WEIGHT: 170 gr/m²

COMPOSITION: 90% nylon - 10% spandex

SIZES: XS-3XL

SPECIFICATIONS:

- Zip and button closure.
- Hidden side pocket with zip closure.
- Badge holder ring on the front left belt loop.
- High visibility reflective strips.
- Compliant to the EN ISO 13688:2022 - CAT.1.

LAREDO
 GREY/YELLOW

02428GSGF..

NEW



SIZES: XS-3XL

LAREDO
 NAVY/ORANGE

02428BMAF..

NEW



SIZES: XS-3XL

LAREDO
 BLACK/GREY

02428NRGS..

NEW



SIZES: XS-3XL

LAREDO
 BLACK/ROYAL

02428NRAZ..

NEW



SIZES: XS-3XL

BOSTON BLACK**02400NR..****CARGO MULTISEASON TROUSERS****WEIGHT:** 260/270 gr/m²**COMPOSITION:** 98% drill cotton • 2% elastane**SIZES:** S - 3XL**SPECIFICATIONS:**

- Soft stretch drill cotton.
- Closing flap with contrasting interior and elasticated sides.
- Multi-pocket.

BOSTON GREY**02400GS..****CARGO MULTISEASON TROUSERS****WEIGHT:** 260/270 gr/m²**COMPOSITION:** 98% drill cotton • 2% elastane**SIZES:** S - 3XL**SPECIFICATIONS:**

- Soft stretch drill cotton.
- Closing flap with contrasting interior and elasticated sides.
- Multi-pocket.

WILSON ROYAL**02405AZ..****WINDSTOPPER JACKET****WEIGHT:** 100 gr/m²**COMPOSITION:** 100% polyester**SIZES:** S - 3XL**SPECIFICATIONS:**

- Soft and lightweight water-repellent Polyester fabric.
- Coated zips with rubbered pullers.
- Elastic cuffs and hem.

WILSON NAVY**02405BM..****WINDSTOPPER JACKET****WEIGHT:** 100 gr/m²**COMPOSITION:** 100% polyester**SIZES:** S - 3XL**SPECIFICATIONS:**

- Soft and lightweight water-repellent Polyester fabric.
- Coated zips with rubbered pullers.
- Elastic cuffs and hem.

BERMUDA BLACK**02410NR..****BERMUDA CARGO****WEIGHT:** 220 gr/m²**COMPOSITION:** 97% cotton • 3% elastane

• Lycra gabardin

SIZES: S - 2XL**SPECIFICATIONS:**

- Soft and resistant stretch cotton fabric with contrast reinforcement stitching.
- Flap closure at the waist with snap button, contrasting interior and elastic at the sides.
- Multi-pocket.

BERMUDA GREY**02410GS..****BERMUDA CARGO****WEIGHT:** 220 gr/m²**COMPOSITION:** 97% cotton • 3% elastane

• Lycra gabardin

SIZES: S - 2XL**SPECIFICATIONS:**

- Soft and resistant stretch cotton fabric with contrast reinforcement stitching.
- Flap closure at the waist with snap button, contrasting interior and elastic at the sides.
- Multi-pocket.

WILSON BLACK**02405NR..****WINDSTOPPER JACKET****WEIGHT:** 100 gr/m²**COMPOSITION:** 100% polyester**SIZES:** S - 3XL**SPECIFICATIONS:**

- Soft and lightweight water-repellent Polyester fabric.
- Coated zips with rubbered pullers.
- Elastic cuffs and hem.

WILSON RED**02405RS..****WINDSTOPPER JACKET****WEIGHT:** 100 gr/m²**COMPOSITION:** 100% polyester**SIZES:** S - 3XL**SPECIFICATIONS:**

- Soft and lightweight water-repellent Polyester fabric.
- Coated zips with rubbered pullers.
- Elastic cuffs and hem.



WORK GLOVES
WORK GLOVES
WORK GLOVES

MECA III



002093..BMAF

002093..NRGF



002093..NR

002093..RS

002093..AZ

WORK GLOVES

COMPOSITION:

- 47% polyester
- 35% suede
- 18% elastane

SIZES:
S - XL

SPECIFICATIONS:

- abrasion-resistant synthetic leather palm
- reinforcements between thumb and index finger;
- back made of abrasion-resistant printed stretch fabric;
- fastening strap to adjust fit.

HYPERGRIP



002094..NRRS

MULTIPURPOSE GLOVES

in micro-perforated polyamide and palm in high-grip microfibre, with fastening strap.

COMPOSITION:

- 85% polyamide
- 15% elastane

SIZES:
S - XL

SPECIFICATIONS:

- touch-sensitive fingertips on index and thumb;
- foam protectors on the palm;
- wrist fastening strap.

SPORTAC (PPE CAT. 2)

002097..GI



PROTECTIVE GLOVES

- EN 388:2016
- EN ISO 21420

PPE CATEGORY II:

Synthetic glove protecting against mechanical risks

ABRASION RESISTANCE:

- 4 (performance levels)

RESISTANCE TO BLADE CUTTING:

- Coupe test: X (not done)

TEAR RESISTANCE:

- 4 (performance levels)

PUNCTURE RESISTANCE:

- 3 (performance levels)

RESISTANCE TO CUTTING BY BLADE EN ISO 13997:

- D (performance levels)

EN PROTECTION AGAINST IMPACTS:

- P (performance level)

SIZES:
8-11

SPECIFICATIONS:

- Adamant® diamond structure for a maximum level of cutting resistance;
- exceptional comfort and dexterity;
- palm resistant to grease and wet grime;
- impact resistant on the back, shock absorbing structure on the palm of the hand.



POP TOOLS

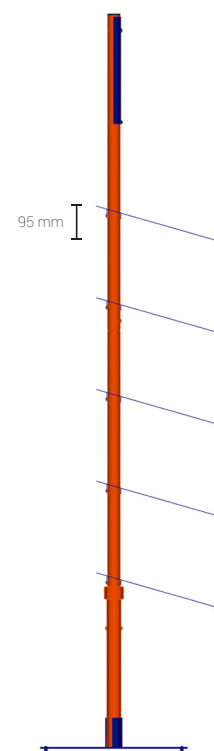
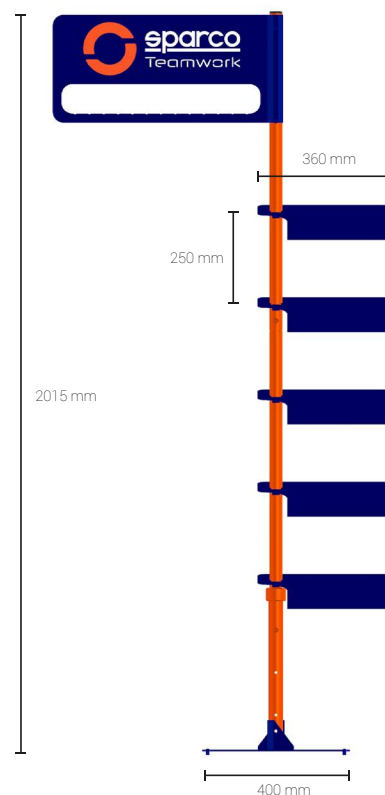




DISPLAY

SM000213

NEW



DISPLAY

Floor display for shoes and clothing. Completely **adjustable and adaptable** to any environment and height, it is made of **solid powder-coated metal**. Base with welded reinforcement and rubber feet. Suitable for displaying **5 pairs of shoes and up to 13 items of clothing**. Comes **complete with a kit of 10 SPARCO® custom hangers** (cod. 099108NR10).

LANYARD

099104AZAF10 (KIT OF 10)
099104AZAF



LANYARD

099114AZ10 (KIT OF 10)
099114AZ



KEYCHAIN TEAMWORK

099092TEAMWOR10 (KIT OF 10)
099092TEAMWORK



KEYCHAIN GYMKHANA

099092GKHANA10 (KIT OF 10)
099092GKHANA



SHELF HIGHLIGHTER

0750011



H 17 X L 30 X P 17,5 CM

Light and durable material, suitable to show 1 shoe. **5-piece set.**

HANGER

099108NR10

KIT of 10 customized SPARCO® HANGERS



COUNTER DISPLAY

0750010



H 31 X L 38 X P 28 CM

Shaped like a pedal set, with an unmistakable racing style. Light and durable material, suitable to show 1 pair of shoes.

OUTLET
OUTLET



GYMKHANA

MAX
S1P SRC



SIZE: 36-48
07527..NRGR

LANDO
S1P SRC



SIZE: 36-48
07527..AZBM



PRACTICE

JACQUES
ESD S1P SRC



SIZE: 36-48
07517..NRRS

NIKI
ESD S1P SRC



SIZE: 36-48
07517..AZAF



NITRO

OTT
ESD S3 SRC



SIZE: 36-48
07522..NRVF



CUP

ADELAIDE
S1P SRC



SIZE: 35-46
07526..NRVF

TORQUE

ALGARVE
01 SRA



SIZE: 37-47
001289..NRRS

BOAVISTA
01 SRA



SIZE: 37-47
001289..NRGF

CHARADE
01 SRA



SIZE: 37-47
001289..BMAF

SEATTLE SOFTSHELL



SIZE: S-3XL
02404NR..



SIZE: S-3XL
02404BM..

PORTLAND POLO



SIZE: S-3XL
02407AZ..



SIZE: S-3XL
02407NR..



SIZE: S-3XL
02407BM..

TRENTON T-SHIRT



SIZE: S-3XL
02408AZ..



SIZE: S-3XL
02408NR..



SIZE: S-3XL
02408BM..



sparco
Teamwork

while stocks last

CERTIFICATIONS AND CE STANDARDS

GUIDE TO EN ISO 20345:2011 STANDARDS

Footwear for professional use in accordance with EN ISO 20345:2011 are marked with an “S” (Safety) as Safety Footwear. The so-called “basic” shoe is marked with the letters “SB” (S = Safety - “B” = Basic). This footwear must have the following minimum requirements:

- height of the upper ■ toe cap (minimum length, minimum supporting base) ■ upper in fresh split leather, microfibre and similar ■ front lining ■ insole ■ sole in any type of material, can be smooth
- the upper, in the low footwear, can be opened in the heel area.

In “SB” footwear, the following requirements are never included unless specified in detail:

- antistatic ■ energy absorption of the heel ■ dynamic waterproofing of the upper ■ sole with lugs
- rear lining ■ water-repellent upper ■ anti-puncture plate or fabric.

The meaning of the stamping that you can find on the footwear is given below. They have been designed, equipped with toe caps designed to provide protection against impact when tested at an energy level of 200J”.

THE MEANING OF THE EUROPEAN STANDARDS

EN ISO 20349:2010 Small splashes of molten metal such as those produced during welding operations and related processes.

EN ISO 20344:2011 Test methodology and general requirements.

EN ISO 20345:2011 Specifications of safety footwear with toe resistance at 200 J.

EN ISO 20347:2012 Specifications of “work” or “professional” footwear. No specific toe cap resistance.

UNI 11583:2015 Footwear marked UNI 11583:2015 meets the requirements of the UNI 11583:2015 standard which specifies the requirements for safety, protective and work footwear for professional use for work on sloping roofs.

FOOTWEAR CLASSIFIED “S”		
SB	BASIC Requirements	
S1/01	S1/01 BASIC requirements supplemented by:	<ul style="list-style-type: none"> ■ closed back (also low footwear) ■ antistatic ■ FO resistance to hydrocarbons ■ energy absorption capacity of the heel
S2/02	S1/01 BASIC requirements supplemented by:	<ul style="list-style-type: none"> ■ dynamic waterproofing of the upper material
S3/03	S2/02 BASIC requirements supplemented by:	<ul style="list-style-type: none"> ■ anti-puncture plate ■ sole with lugs or tread
S4/04	S3/03 BASIC requirements supplemented by:	<ul style="list-style-type: none"> ■ antistatic ■ energy absorption of the heel ■ FO resistance to hydrocarbons
S5	S4 BASIC requirements supplemented by:	<ul style="list-style-type: none"> ■ anti-puncture plate ■ sole with lugs or tread

SLIP RESISTANCE CLASSES	
SRA	Slip resistance with ceramic ground with water and detergent.
SRB	Slip resistance with steel and glycerine ground.
SRC	Slip resistance with both conditions described above.

All Sparco Teamwork safety footwear is certified with SRC class slip resistance.

Marking of conformity with Regulation (EU) 2016/425	Manufacturer's name SPARCO	Production date 09/022
EN ISO 20345:2011 European standard	S3 Protection class	000000 - LANDO Product code
	SRC Slip resistance requirement	
	WR Additional requirements	

The following are affixed on the gusset or on the tongue of the shoe:

• manufacturer's mark • the article code • the month and year of manufacture • CE conformity marking

PROTECTION CLASS SYMBOL		EN ISO 20345:2011				EN ISO 20347:2012				EN ISO 20345:2011		EN ISO 20347:2012		Minimum required values EN ISO 20345:2011 + EN ISO 20347:2012
		SB	S1	S2	S3	OB	O1	O2	O3	S4	S5	O4	O5	
	Closed heel area	0	V	V	V	0	V	V	V	V	V	V	V	
	Toe cap resistant to an impact of 200J	V	V	V	V	-	-	-	-	V	V	-	-	Mechanical risk, toe protection, falling objects, foot impacts, height after impact ≥ 14mm (size 42)
	Toe cap resistant to static compression of 15 kN	V	V	V	V	-	-	-	-	V	V	-	-	Mechanical risk, toe protection, falling objects, foot impacts, height after impact ≥ 14mm (size 42)
A	Antistatic footwear	0	V	V	V	0	V	V	V	V	V	V	V	Electrical resistance of the bottom compressed between 1x105 OHM and 1x109 OHM
E	Energy absorption in the heel area	0	V	V	V	0	V	V	V	V	V	V	V	Mechanical risk: reduction of trauma to the heel resulting from impacts or falls from limited heights, mechanical energy ≥ 20 Joules
FO ex oro	Resistance to hydrocarbons of the sole	0	V	V	V	0	0	0	0	V	V	0	0	Volume increase of the sole sample < 12%
WRU	Penetration and water absorption of the upper	0	-	V	V	0	0	V	V	-	-	-	-	Resistance to penetration and absorption of water from the upper. H2O absorption after 60' ≤ 30% H2O transmitted after 60' ≤ 0.2 g
P	Resistance to perforation of the bottom of the footwear	0	0	0	V	0	0	0	V	0	V	0	V	F ≥ 1100 N
CI	Insulation from the cold of the bottom of the footwear	0	0	0	0	0	0	0	0	0	0	0	0	Increase T ≥ 22°C placed on a plate at a T of 150°C for 30'
HI	Insulation from the heat of the bottom of the footwear	0	0	0	0	0	0	0	0	0	0	0	0	Decrease T ≥ 10°C in an environment at -17°C for 30'
C	Conductive footwear	0	-	-	-	0	-	-	-	-	-	-	-	Electrical resistance of the bottom < 1x105 OHM
HRD	Heat resistance by contact of the sole	0	0	0	0	0	0	0	0	0	0	0	0	Sample in contact at 300°C for 60'' - Does not melt
AN	Ankle protection	0	0	0	0	0	0	0	0	0	0	0	0	Mechanical risk, ankle protection: average value transmitted force ≥ 10 kN maximum value <15 kN
	Electrically insulating footwear (Dielectric)	0*	-	-	-	0	-	-	-	0	0	0	0	Class 00 or Class 0 - CEI EN 50321 standard
WR	Water resistant footwear	0	0	0	0	0	0	0	0	-	-	-	-	After 1000 steps or after 80' of automatic dynamic cycle, no more than 3 cm2 of water must enter (stain)
M	Metatarsal protection	0	0	0	0	-	-	-	-	0	0	-	-	Mechanical risk, metatarsal protection: falling objects, impact to the foot. Height after impact ≥ 40 mm (size 42)
CR	Cutting resistance of the upper - F ≥ 1100 N	0	0	0	0	0	0	0	0	0	0	0	0	F ≥ 1100 N
SRC	(SRA+SRB) Requisito di antiscivolo	V	V	V	V	V	V	V	V	V	V	V	V	Slip protection on different surfaces

V = Mandatory requirement for the indicated category
0 = Optional requirement added to the mandatory ones, if indicated on the marking - = Non-mandatory requirement, check shoe stamping

ESD CEI EN 61340-5-1 2016 | COR 1:2017 STANDARD

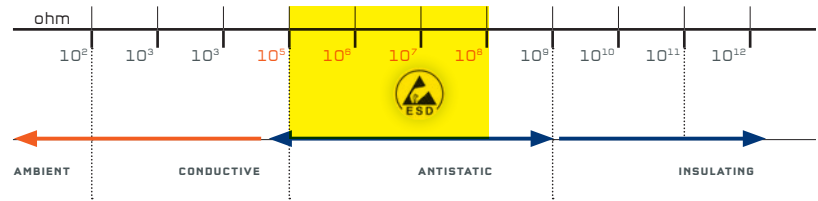
The abbreviation **ESD** (ElectroStaticDischarge) indicates a **discharge of static energy that passes from one body to another**. In hazardous workplaces, ESD discharges can be the cause of even serious accidents (starting a fire), and can damage machinery and their sensitive components.

ESD shoes are required for:

- Work with microchips ■ Production of sensitive electrical parts ■ In painting
- When working in contact with flammable liquids and gases

Evaluated on ESD by conditioning the shoe at 12% relative humidity:

- resistance of the footwear/operator combination | metal electrode less than $1x10^{-9}\text{ ohm}$
- storage capacity of the electric charge of the footwear/operator combination | metal electrode less than 100 volts



REGULATION (EU) 2016/425

Article 47: EC certificates issued in accordance with Directive 89/686/EEC are valid until 21/04/2023.

After 21/04/2019, all new models must be certified according to Regulation 2016/425.

COMPLIANCE WITH THE REACH REGULATION

The company complies with the REACH Regulation (EC) no. 1907/2006 in force since 1 June 2007, ensuring that the products used and supplied by SPARCO TEAMWORK:

- do not contain SVHC (Substance of Very High Concern) substances;
- do not contain substances that are on the list in Annex XIV_ of the REACH Regulation;
- do not contain substances that are on the constantly updated Candidate List;
- do not contain substances subject to restrictions (Annex XVII of REACH) that the relative restrictions of use are observed.

Furthermore, in the event that an article contains an SVHC (Substance of Very High Concern) substance or one on the Candidate List in concentrations higher than 0.1% weight/weight, sufficient information is provided with the name of the substance and instructions helpful for the safe use of the article (see Article 59.1 of REACH).

NEW EN ISO 20345:2022

Footwear for professional use in accordance with EN ISO 20345:2022 are marked with an “S” (Safety) as Safety Footwear.

Safety footwear categories:

Category	Class	Additional requirements
SB	I o II	Safety basic requirements
S1	I	SB + Closed heel area + Antistatic property + Energy absorption of seat region
S2	I	S1+ Upper water penetration and absorption
S3 (metal insert type P) or S3L (non-metal insert type PL) or S3S (non-metal insert type PS)	I	S2 + perforation resistance according to the type + cleated outsole
S4	II	SB + Closed heel area + Antistatic property + Energy absorption of seat region
S5 (metal insert type P) or S5L (non-metal insert type PL) or S5S (non-metal insert type PS)	II	S4 + perforation resistance according to the type cleated outsole
S6	I	S2 + water resistance of the whole footwear
S7 (metal insert type P) or S7L (non-metal insert type PL) or S7S (non-metal insert type PS)	I	S3 + water resistance of the whole footwear
Class I: Footwear made from leather and other materials, excluding all-rubber or all-polymeric footwear		
Class II: All-polymeric (i.e. entirely moulded) including all-rubber (i.e. entirely vulcanized) footwear		

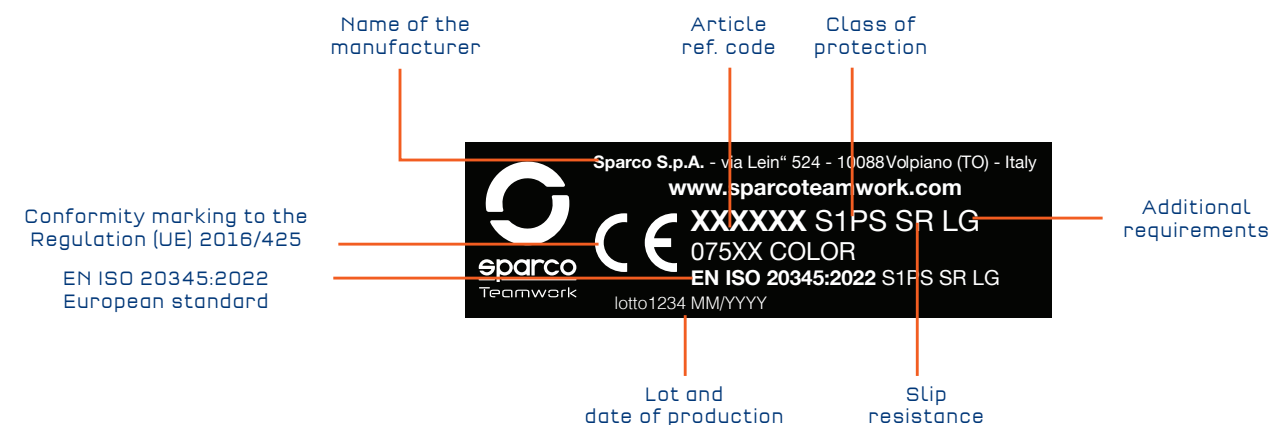
Sparco Teamwork footwear are designed to minimise the risk of injury which could be inflicted by the wearer during use. They are designed to be used in conjunction with a safe working environment, and will not completely prevent injury if an accident occurs which exceeds the testing limits of EN ISO 20345:2022.

The footwear protects the wearer's toes against risk of injury from falling objects and crushing when worn in industrial and commercial environments where potential hazards occur with the following protection plus, where applicable, additional protection.

Impact protection provided is 200 Joules.
Compression protection provided is 15,000 Newton's.

PRODUCT MARKING

Marking on footwear denotes that the footwear is licensed according to the PPE regulation and is as follows:



Additional protection may be provided, and is identified on the product by it marking as follows:

	Marking code
Perforation resistance	
Perforation resistance (min.1100 N) metal insert : d=4.5mm Conical Nail	P
Perforation resistance (min.1100 N) non-metal insert :d=4.5mm Conical Nail	PL
Perforation resistance (min.1100 N & each single value ≥950 N) non-metal insert: d=3.0mm Conical Nail	PS
Electrical properties	
Partially Conductive (maximum resistance 100 kΩ)	C
Antistatic (resistance range of 100 kΩ to 1000 MΩ)	A
Resistance to inimical environments:	
Heat Insulation of sole complex	HI
Cold Insulation of sole complex	CI
Energy absorption of seat region (20 Joules)	E
Water resistance	WR
Metatarsal protection	M
Ankle protection	AN
Cut resistant	CR
Scuff Cap abrasion	SC
Slip resistance - on ceramic tile floor with glycerine	SR
Upper	
Water penetration and water absorption	WPA
Outsole	
Resistance to hot contact	HRO
Resistance to fuel oil	FO
Ladder grip	LG

SLIP RESISTANCE

For footwear successfully tested against EN ISO 20345:2022 slip resistance, the following marking symbol apply:

- Basic requirement of slip resistance: Ceramic tile with sodium lauryl sulphate, no symbol.
- Additional requirement of slip resistance: Ceramic tile with glycerol, symbol SR.
- The footwear is not tested against slip resistance requirement, it is marked with symbol “Ø”.

Note: Slippage may still occur in certain environments.

PERFORATION RESISTANCE

In Sparco Teamwork footwear, non-metal perforation-resistance insert is used. The perforation resistance of this footwear has been measured in the laboratory using standardized nails and forces. Nails of smaller diameter and higher static or dynamic loads will increase the risk of perforation occurring. In such circumstances, additional preventative measures should be considered. Three generic types of perforation resistant inserts are currently available in PPE footwear. These are metal types and those from non-metal materials, which shall be chosen on basis of a job-related risk assessment. All types give protection against perforation risks, but each has different additional advantages or disadvantages including the following:

Metal (e.g. S1P, S3): Is less affected by the shape of the sharp object/hazard (i.e. diameter, geometry, sharpness) but due to shoemaking techniques may not cover the entire lower area of the foot.
Non-metal (PS or PL or category e.g. S1PS, S3L): May be lighter, more flexible and provide greater coverage area, but the perforation resistance may vary more depending on the shape of the sharp object/hazard (i.e. diameter, geometry, sharpness). Two types in terms of the protection afforded are available. Type PS may offer more appropriate protection from smaller diameter objects than type PL.

CE DECLARATION OF CONFORMITY

For Declaration of conformity, please refer to website: www.sparcoteamwork.com.

ALPHABETICAL
INDEX
ALPHABETICAL

SAFETY SHOES

• ACROPOLIS	P. 19	• OLYMPUS	P. 19
• ALBERT	P. 41	• PALMA	P. 50
• ARCTIC	P. 47	• PATO	P. 25
• BAKU	P. 44	• PETTER	P. 37
• BALTIMORA	P. 26	• RANGER	P. 31
• CHARLOTTE	P. 26	• RICARD	P. 41
• CHESTER	P. 18	• RICHMOND	P. 27
• COLTON	P. 23	• RED BULL	P. 12
• CONOR	P. 28	• ROC	P. 44
• DANI	P. 16	• SANREMO	P. 21
• DANICA	P. 27	• SEB	P. 17
• DETROIT	P. 23	• SOCHI	P. 42
• DIDIER	P. 37	• SONOMA	P. 25
• DURANGO	P. 51	• STIRIA	P. 44
• EDMONTON	P. 25	• STONE	P. 45
• FELIX	P. 22	• TACOMA	P. 18
• FORESTER	P. 31	• TEXAS	P. 22
• HANNU	P. 38	• WILLEN	P. 15
• HINWIL	P. 49	• WOKING	P. 49
• JODY	P. 34	• ZELTWEG	P. 49
• JOS	P. 32		
• JURI	P. 29		
• KEKE	P. 34		
• LEAP	P. 45		
• LUTON	P. 14		
• MARCUS	P. 37		
• MARTINI	P. 21		
• MIKI	P. 53		
• MIKKO	P. 39		
• MILTON	P. 13		
• MONTECARLO	P. 21		
• MOTEGI	P. 43		
• NELSON	P. 34		
• NIGEL	P. 33		
• NURBURG	P. 41		
• OKAYAMA	P. 45		

WORKWEAR

• ALABAMA TECH FULL ZIP	P. 63
• ATLANTA TECH SHORTS	P. 77
• AUSTIN TECH LIGHT SHELL	P. 59
• BERMUDA CARGO SHORTS	P. 80
• BOSTON CARGO TROUSERS	P. 80
• COLORADO TECH HOODED FULL ZIP	P. 61
• DALLAS TECH DENIM	P. 75
• ILLINOIS TECH LIGHT VEST	P. 65
• KANSAS TECH LIGHT TROUSERS	P. 73
• LAREDO TECH LIGHT SHORTS	P. 79
• OREGON TECH TROUSERS	P. 71
• TOLEDO TECH POLO	P. 67
• TUCSON TECH T-SHIRT	P. 69
• WILSON WINDSTOPPER	P. 81
• YORK TECH SOFT SHELL	P. 57

WORK GLOVES

• HYPERGRIP	P. 84
• MECA III	P. 84
• SPORTAC	P. 85

POP TOOLS

• COUNTER DISPLAY	P. 89
• DISPLAY	P. 88
• HANGER	P. 89
• LANYARD	P. 89
• KEYCHAIN	P. 89
• SHELF HIGHLIGHTER	P. 89

The data and characteristics indicated in this catalogue are subject to changes without prior notice.

The photographic reproduction of the shades of colour may not be perfectly faithful to reality.

In order to constantly improve the collections, the products contained in this catalogue could be replaced or modified. The photos contained are purely illustrative and not binding.

ADRENALINE, PERFORMANCE, SAFETY AND PASSION:

the four key words that have always characterized Sparco in its technical support activity for **Motorsport teams**, first and foremost Redbull in F1. Hence the desire to support the ambitious project of '**Acrobatica**' and skipper Alberto Riva with the 'Sparco Teamwork' brand, synonymous with quality and trust in teamwork.

Sparco TEAMWORK is alongside ACROBATICA not only for the "**Class 40**" sporting activity, but also in the specific construction and restoration activity of all the staff employed daily with the **supply of personalized 'Acrobatica' safety shoes and workwear**.





THE POWER OF PERFORMANCE

HEADQUARTERS

SPARCO S.p.A.
Via Leinì, 524
10088 Volpiano (TO) - Italy
Tel. +39 011 22.40.716
e-mail: teamwork@sparco.it
www.sparco-official.com

BRANCH

SPARCO TEAMWORK IBERIA, SL
C/ Illa de Buda, 2
Polígono industrial Can Canals
08192 Sant Quirze del Vallés.
Barcelona
+34 93 806 54 94
info@iberia.sparcoteamwork.com



sparcoteamwork.com

