



**sparco**

Teamwork

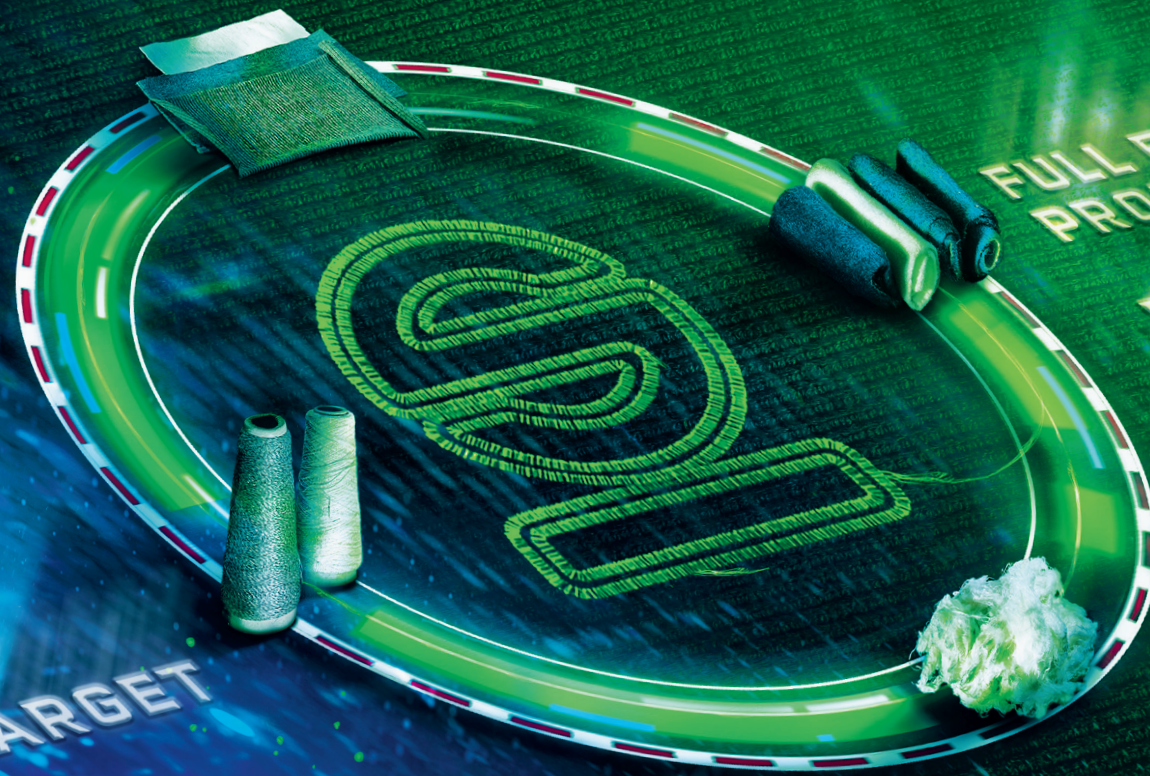
**SAFETY SHOES  
& WORKWEAR**



CATALOGUE **2024** / ENGLISH



# OUR RACE TOWARD SUSTAINABILITY



PARENTAL POLICY  
3 STARS IN THE  
LEGALITY RATING  
CARBON  
NEUTRALITY TARGET

FULL EFFICIENCY  
PRODUCT LINE  
RENEWABLE ENERGY  
REFORESTING



Discover our projects for  
**ENVIRONMENTAL, SOCIAL  
and GOVERNANCE (ESG)**



# SAFETY AND TECHNOLOGY IN MOTORSPORT AND AT WORK



# BEST FORMULA1 TEAMS CHOOSE SPARCO



When you think about the concept of **safety**, the connection to **Sparco** is almost automatic. For more than forty years Sparco has been the official safety supplier of **the most important world teams** in the most dangerous sport in the world: **MOTORSPORT**.

**Sparco Teamwork** is the collection of **shoes and workwear** in which **safety, lightness and design** draw inspiration from the motorsport experience, translating into a work key with the same goal: to guarantee **maximum performance**.





**WELCOME  
TO THE  
SPARCO  
WORLD.**



# RACE & RUNNER **INDEX** OF WORKWEAR

**SPARCO** / CATALOGUE 2024

## **SAFETY SHOES**

p. 8 - 49



## **WORKWEAR**

p. 50 - 77



## **WORK GLOVES**

p. 78 - 81



## **POP TOOLS**

p. 82 - 85



## **OUTLET**

p. 86 - 89





# TEAMWORK TECHNOLOGY



SPARCO TEAMWORK shoes are developed using the best technologies in terms of soles and midsoles, in order to optimize the exertion produced in walking by the forefoot where the greatest stresses for the user are concentrated, thus returning **70%** of the energy produced.

This benefit offers advantages in using SPARCO TEAMWORK footwear, such as:

- less fatigue at the end of the day, thus improving reflexes and attention to the dangers of slipping and tripping injuries;
- less exertion in walking;
- less strain on the back and spine;
- relaxation of the muscles.

## FLEXGRIP+



Super light sole in dual density polyurethane with special design of the lugs which guarantee maximum grip in all flexion conditions.

## CROSSGRIP



Ultralight sole with PHYLON midsole and CROSSGRIP rubber tread with lugs that guarantee a strong grip even on particularly uneven surfaces.

## MULTIGRIP



Ultralight sole with shock absorbing effect provided by a thick ultralight EVA midsole and MULTIGRIP RUBBER tread.

## R-FLEX



Ultralight sole in single-density polyurethane designed for intensive use where the foot bends frequently.

## PRISMFLEX



Ultralight sole with EVA midsole and genuine rubber tread with PRISMA texture that provides strong grip in all foot bending conditions.

## DYNATECH



Lightweight dual density polyurethane sole with dynamic drain design to facilitate the outflow of liquids, always guaranteeing maximum grip.

## STREETTECH



Ultralight dual-density polyurethane sole designed to facilitate dynamic use and move safely in all situations.

## WAVE TECH



Ultralight sole with phylon midsole and rubber tread. Ideal for all uses, even for outdoors in leisure time.



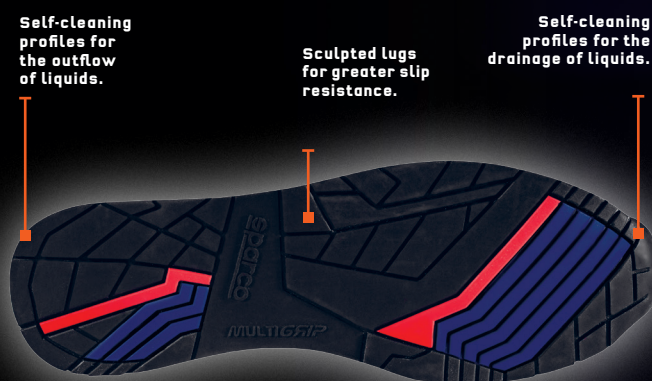
# SAFETY SHOES





# LINE ORACLE RED BULL RACING LINE

THANKS TO THE AGREEMENT WITH THE FORMULA1 TEAM "ORACLE RED BULL RACING", SPARCO DEVELOPED A SAFETY SHOES LINE MADE OF PRECIOUS MATERIALS AND SPECIAL ORACLE RED BULL RACING LIVERIES. FOR THOSE SEEKING SAFETY AND PERFORMANCE, IN FULL MOTORSPORT SPIRIT.



SUPERLIGHT EVA MIDSOLE AND HRO RUBBER TREAD.

NEW

CE EN ISO 20345:2022



RED BULL ESD S3S SR FO HRO

07535RB..BMRS



**UPPER:**  
fine water-repellent nubuck and suede.  
**Additional 2nd color laces included.**

**LINING:**  
breathable micro-perforated 3D fabric.

**REMOVABLE INSOLE:**  
antistatic in PU with ergonomic thermoforming.

**ANTI-PERFORATION INSOLE:**  
made from zero-perforation textile fibre.

**TOE CAP:**  
non magnetic composite, insulating, resistant to 200J.

**SOLE:**  
EVA midsole and HRO nitrile rubber tread with energy absorption on heel.

**SIZES:**  
36-48 (UK 3 ½ -13)

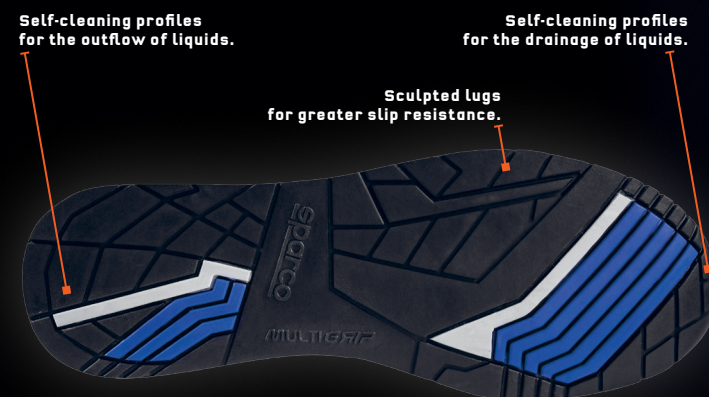
OFFICIAL LICENSED PRODUCT





# LINE GYMKHANA LINE

**SNEAKER-STYLE SAFETY FOOTWEAR, MADE OF EVA MIDSOLE AND MULTIGRIP RUBBER TREAD, VELOUR MICROFIBRE UPPER AND BREATHABLE MICRO-PERFORATED FABRIC. SUITABLE FOR ANY USE.**



**SUPERLIGHT EVA MIDSOLE AND MULTIGRIP RUBBER TREAD.**



CE EN ISO 20345:2011



## DANI S1P SRC

07527..BMGF



**UPPER:**  
velour microfibre and breathable micro-perforated fabric.  
**Additional 2nd color laces included.**

**LINING:**  
breathable micro-perforated 3D fabric.

**REMOVABLE INSOLE:**  
antistatic in PU with ergonomic thermoforming.

**ANTI-PERFORATION INSOLE:**  
made from zero-perforation textile fibre.

**TOE CAP:**  
non magnetic composite, insulating, resistant to 200J.

**SOLE:**  
EVA midsole and nitrile rubber tread with energy absorption on heel.

**SIZES:**  
36-48 (UK 3 ½ -13)

## SEB S1P SRC

07527..VSLI



**UPPER:**  
velour microfibre and breathable micro-perforated fabric.  
**Additional 2nd color laces included.**

**LINING:**  
breathable micro-perforated 3D fabric.

**REMOVABLE INSOLE:**  
antistatic in PU with ergonomic thermoforming.

**ANTI-PERFORATION INSOLE:**  
made from zero-perforation textile fibre.

**TOE CAP:**  
non magnetic composite, insulating, resistant to 200J.

**SOLE:**  
EVA midsole and nitrile rubber tread with energy absorption on heel.

**SIZES:**  
36-48 (UK 3 ½ -13)



# LINE GYMKHANA LINE



**SNEAKER-STYLE SAFETY FOOTWEAR**  
MADE OF FINE **WATER-REPELLENT**  
**NUBUCK** AND **SUEDE**,  
**EVA MIDSOLE** AND **"HRO"**  
RUBBER TREAD WITH  
**TPU HEEL REINFORCEMENT.**  
**SUITABLE FOR ANY OCCASION.**

EN ISO 20345:2011



Self-cleaning profiles  
for the outflow of liquids.

Self-cleaning profiles  
for the drainage of liquids.

Sculpted lugs  
for greater slip resistance.



**EVA ULTRALIGHT MIDSOLE**  
**AND MULTIGRIP HRO RUBBER TREAD.**



**MULTIGRIP**

## TACOMA **ESD** S3 SRC HRO

07535..BMRS



**UPPER:**  
fine water-repellent nubuck and suede.  
**Additional 2nd color laces included.**  
**LINING:**  
breathable micro-perforated 3D fabric.  
**REMOVABLE INSOLE:**  
antistatic in PU with  
ergonomic thermoforming.  
**ANTI-PERFORATION INSOLE:**  
made from zero-perforation textile fibre.  
**TOE CAP:**  
non magnetic composite,  
insulating, resistant to 200J.  
**SOLE:**  
EVA midsole and HRO nitrile rubber  
tread with energy absorption on heel.  
**SIZES:**  
36-48 (UK 3 ½ -13)

## OLYMPUS **ESD** S3 SRC HRO

07536..BMRS



**UPPER:**  
fine water-repellent nubuck and suede.  
**Additional 2nd color laces included.**  
**LINING:**  
breathable micro-perforated 3D fabric.  
**REMOVABLE INSOLE:**  
antistatic in PU with  
ergonomic thermoforming.  
**ANTI-PERFORATION INSOLE:**  
made from zero-perforation textile fibre.  
**TOE CAP:**  
non magnetic composite,  
insulating, resistant to 200J.  
**SOLE:**  
EVA midsole and HRO nitrile rubber  
tread with energy absorption on heel.  
**SIZES:**  
36-48 (UK 3 ½ -13)

## CHESTER **ESD** S3 SRC HRO

07535..GSVF



**UPPER:**  
fine water-repellent nubuck and suede.  
**Additional 2nd color laces included.**  
**LINING:**  
breathable micro-perforated 3D fabric.  
**REMOVABLE INSOLE:**  
antistatic in PU with  
ergonomic thermoforming.  
**ANTI-PERFORATION INSOLE:**  
made from zero-perforation textile fibre.  
**TOE CAP:**  
non magnetic composite,  
insulating, resistant to 200J.  
**SOLE:**  
EVA midsole and HRO nitrile rubber  
tread with energy absorption on heel.  
**SIZES:**  
36-48 (UK 3 ½ -13)

## ACROPOLIS **ESD** S3 SRC HRO

07536..GSAF



**UPPER:**  
fine water-repellent nubuck and suede.  
**Additional 2nd color laces included.**  
**LINING:**  
breathable micro-perforated 3D fabric.  
**REMOVABLE INSOLE:**  
antistatic in PU with  
ergonomic thermoforming.  
**ANTI-PERFORATION INSOLE:**  
made from zero-perforation textile fibre.  
**TOE CAP:**  
non magnetic composite,  
insulating, resistant to 200J.  
**SOLE:**  
EVA midsole and HRO nitrile rubber  
tread with energy absorption on heel.  
**SIZES:**  
36-48 (UK 3 ½ -13)



# LINE MARTINI RACING LINE

SPECIAL LINE OF SAFETY FOOTWEAR  
COMPLIANT WITH THE NEW **EN ISO 20345:2022**  
IN MARTINI RACING LIVERY.  
FLEXIBLE, LIGHTWEIGHT SOLES AND PREMIUM  
MATERIALS SUCH AS **NUBUCK, SUEDE OR VELOUR MICROFIBER.**  
COMFORTABLE AND WITH A UNIQUE STYLE.



**NEW**  
CE EN ISO 20345:2022

**MULTIGRIP**



Self-cleaning  
profiles for the  
drainage of liquids.

Sculpted lugs  
for greater slip  
resistance.

Self-cleaning  
profiles for the  
outflow  
of liquids.

**FLEXGRIP+**



Laminar  
profiles for  
greater slipping  
resistance.

Profiles  
engraved for  
a better grip  
on stairs  
(LG - heel  
height ≥ 10 mm).

Laminar profile to increase  
grip for SR test.

## MARTINI ESD S1PS SR FO HRO

07527MR..BM



**UPPER:**  
velour microfibre and breathable micro-perforated fabric.  
**Additional 2nd color laces included.**

**LINING:**  
breathable micro-perforated 3D fabric.

**REMOVABLE INSOLE:**  
antistatic in PU with  
ergonomic thermoforming.

**ANTI-PERFORATION INSOLE:**  
made from zero-perforation textile fibre.

**TOE CAP:**  
non magnetic composite,  
insulating, resistant to 200J.

**SOLE:**  
EVA midsole and HRO nitrile rubber  
tread with energy absorption on heel.

**SIZES:**  
36-48 (UK 3 ½ -13)

## MONTECARLO ESD S3S SR FO HRO

07535MR..BM



**UPPER:**  
fine water-repellent nubuck and suede.  
**Additional 2nd color laces included.**

**LINING:**  
breathable micro-perforated 3D fabric.

**REMOVABLE INSOLE:**  
antistatic in PU with  
ergonomic thermoforming.

**ANTI-PERFORATION INSOLE:**  
made from zero-perforation textile fibre.

**TOE CAP:**  
non magnetic composite,  
insulating, resistant to 200J.

**SOLE:**  
EVA midsole and HRO nitrile rubber  
tread with energy absorption on heel.

**SIZES:**  
36-48 (UK 3 ½ -13)

## SANREMO ESD S3S SR FO LG

07537MR..BMRS



**UPPER:**  
water repellent suede and microfiber reinforcements.  
**Additional 2nd color laces included .**

**LINING:**  
breathable micro-perforated 3D fabric.

**REMOVABLE INSOLE:**  
antistatic PU with ergonomic thermoforming.

**ANTI-PERFORATION INSOLE:**  
made from zero-perforation ultralight textile  
fiber (PS - nail Ø 3.0 mm).

**TOE CAP:**  
non magnetic fiberglass,  
insulating, resistant to 200J.

**SOLE:**  
PU dual density with absorption  
of energy on the heel + LG.

**SIZES:**  
35-48 (UK 2 ½ -13)



# LINE INDY LINE

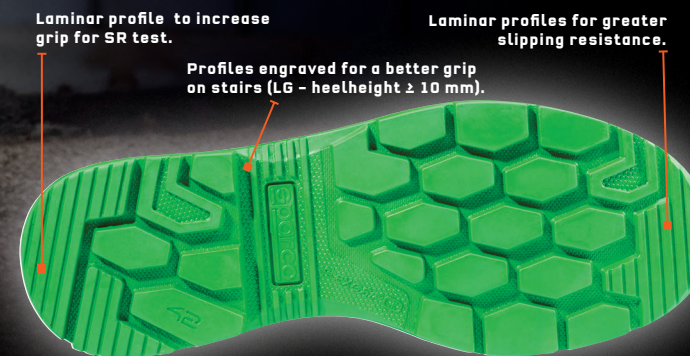
**SAFETY FOOTWEAR COMPLIANT WITH THE NEW EN ISO 20345:2022, MADE OF FINE PERFORATED SUEDE LEATHER, "FLEXGRIP+" BI-DENSITY PU SOLE WITH SPECIAL HEEL COMPLIANT WITH THE REQUIREMENTS FOR LADDER GRIP (LG). COMFORTABLE AND BREATHABLE TO WORK EASILY EVERYDAY.**

**PS** | Perforation resistance (min.1100 N & each single value ≥950 N) non-metal insert: d=3.0mm Conical Nail.

**SR** | Slip resistance - on ceramic tile floor with glycerine.

**LG** | Ladder grip.

MONDOPOINT 11



**"FLEXGRIP+" BI-DENSITY PU SOLE WITH SPECIAL HEEL COMPLIANT WITH THE REQUIREMENTS FOR LADDER GRIP (LG).**

**NEW**

CE EN ISO 20345:2022

**FLEXGRIP+**

## FELIX ESD S1PS SR FO LG

07538..GRVF



**NEW**

**UPPER:** perforated suede and microfiber reinforcements.  
**Additional 2nd color laces included.**

**LINING:** breathable micro-perforated 3D fabric.

**REMOVABLE INSOLE:** antistatic PU with ergonomic thermoforming.

**ANTI-PERFORATION INSOLE:** made from zero-perforation ultralight textile fiber (PS - nail Ø 3.0 mm).

**TOE CAP:** non magnetic fiberglass, insulating, resistant to 200J.

**SOLE:** PU dual density with absorption of energy on the heel + LG.

**SIZES:** 35-48 (UK 2 ½ -13)

## COLTON ESD S1PS SR FO LG

07538..TAGI



**NEW**

**UPPER:** perforated suede and microfiber reinforcements.  
**Additional 2nd color laces included.**

**LINING:** breathable micro-perforated 3D fabric.

**REMOVABLE INSOLE:** antistatic PU with ergonomic thermoforming.

**ANTI-PERFORATION INSOLE:** made from zero-perforation ultralight textile fiber (PS - nail Ø 3.0 mm).

**TOE CAP:** non magnetic fiberglass, insulating, resistant to 200J.

**SOLE:** PU dual density with absorption of energy on the heel + LG.

**SIZES:** 35-48 (UK 2 ½ -13)

## TEXAS ESD S1PS SR FO LG

07538..GSGF



**UPPER:** perforated suede and microfiber reinforcements.  
**Additional 2nd color laces included.**

**LINING:** breathable micro-perforated 3D fabric.

**REMOVABLE INSOLE:** antistatic PU with ergonomic thermoforming.

**ANTI-PERFORATION INSOLE:** made from zero-perforation ultralight textile fiber (PS - nail Ø 3.0 mm).

**TOE CAP:** non magnetic fiberglass, insulating, resistant to 200J.

**SOLE:** PU dual density with absorption of energy on the heel + LG.

**SIZES:** 35-48 (UK 2 ½ -13)

## DETROIT ESD S1PS SR FO LG

07538..NRGS



**UPPER:** perforated suede and microfiber reinforcements.  
**Additional 2nd color laces included.**

**LINING:** breathable micro-perforated 3D fabric.

**REMOVABLE INSOLE:** antistatic PU with ergonomic thermoforming.

**ANTI-PERFORATION INSOLE:** made from zero-perforation ultralight textile fiber (PS - nail Ø 3.0 mm).

**TOE CAP:** non magnetic fiberglass, insulating, resistant to 200J.

**SOLE:** PU dual density with absorption of energy on the heel + LG.

**SIZES:** 35-48 (UK 2 ½ -13)



# LINE INDY LINE

**SAFETY FOOTWEAR COMPLIANT WITH THE NEW EN ISO 20345:2022, MADE OF ULTRA-BREATHABLE PERFORATED MESH, SUEDE AND MICROFIBER REINFORCEMENTS, "FLEXGRIP+" BI-DENSITY PU SOLE WITH SPECIAL HEEL COMPLIANT WITH THE REQUIREMENTS FOR LADDER GRIP (LG). COMFORTABLE AND ULTRA-BREATHABLE TO ALWAYS WORK EASILY.**

Laminar profile to increase grip for SR test.

Laminar profiles for greater slipping resistance.

Profiles engraved for a better grip on stairs (LG - heelheight  $\geq 10$  mm).



**"FLEXGRIP+" BI-DENSITY PU SOLE WITH SPECIAL HEEL COMPLIANT WITH THE REQUIREMENTS FOR LADDER GRIP (LG).**



**NEW**

**CE EN ISO 20345:2022**



**FLEXGRIP+**

**PS** | Perforation resistance (min.1100 N & each single value  $\geq 950$  N) non-metal insert: d=3.0mm Conical Nail.

**SR** | Slip resistance - on ceramic tile floor with glycerine.

**LG** | Ladder grip.

**P. 93**

## PATO **ESD** S1PS SR FO LG

**07539..GRAF**



**NEW**

**UPPER:**  
ultra-breathable perforated mesh, suede and microfiber reinforcements.  
**Additional 2nd color laces included.**

**LINING:**  
breathable micro-perforated 3D fabric.

**REMOVABLE INSOLE:**  
antistatic PU with ergonomic thermoforming.

**ANTI-PERFORATION INSOLE:**  
made from zero-perforation ultralight textile fiber (PS - nail  $\varnothing$  3.0 mm).

**TOE CAP:**  
non magnetic fiberglass, insulating, resistant to 200J.

**SOLE:**  
PU dual density with absorption of energy on the heel + LG.

**SIZES:**  
35-48 (UK 2 ½ -13)

## SONOMA **ESD** S1PS SR FO LG

**07539..GSVF**



**UPPER:**  
ultra-breathable perforated mesh, suede and microfiber reinforcements.  
**Additional 2nd color laces included.**

**LINING:**  
breathable micro-perforated 3D fabric.

**REMOVABLE INSOLE:**  
antistatic PU with ergonomic thermoforming.

**ANTI-PERFORATION INSOLE:**  
made from zero-perforation ultralight textile fiber (PS - nail  $\varnothing$  3.0 mm).

**TOE CAP:**  
non magnetic fiberglass, insulating, resistant to 200J.

**SOLE:**  
PU dual density with absorption of energy on the heel + LG.

**SIZES:**  
35-48 (UK 2 ½ -13)

## EDMONTON **ESD** S1PS SR FO LG

**07539..TAGI**



**UPPER:**  
ultra-breathable perforated mesh, suede and microfiber reinforcements.  
**Additional 2nd color laces included.**

**LINING:**  
breathable micro-perforated 3D fabric.

**REMOVABLE INSOLE:**  
antistatic PU with ergonomic thermoforming.

**ANTI-PERFORATION INSOLE:**  
made from zero-perforation ultralight textile fiber (PS - nail  $\varnothing$  3.0 mm).

**TOE CAP:**  
non magnetic fiberglass, insulating, resistant to 200J.

**SOLE:**  
PU dual density with absorption of energy on the heel + LG.

**SIZES:**  
35-48 (UK 2 ½ -13)



# LINE INDY LINES



MONDOPOINT  
11

NEW

CE EN ISO 20345:2022

**SAFETY FOOTWEAR COMPLIANT WITH THE NEW EN ISO 20345:2022, MADE OF FINE WATER REPELLENT SUEDE LEATHER OR NUBUCK, "FLEXGRIP+" BI-DENSITY PU SOLE WITH SPECIAL HEEL COMPLIANT WITH THE REQUIREMENTS FOR LADDER GRIP (LG). LIGHTWEIGHT AND SUITABLE FOR ANY USE.**

**PS** | Perforation resistance (min.1100 N & each single value ≥950 N) non-metal insert: d=3.0mm Conical Nail.

**SR** | Slip resistance - on ceramic tile floor with glycerine.

**LG** | Ladder grip.

P. 93

Laminar profile to increase grip for SR test.

Profiles engraved for a better grip on stairs (LG - heelheight ≥ 10 mm).

Laminar profiles for greater slipping resistance.



**"FLEXGRIP+" BI-DENSITY PU SOLE WITH SPECIAL HEEL COMPLIANT WITH THE REQUIREMENTS FOR LADDER GRIP (LG).**



**FLEXGRIP+**

## BALTIMORA ESD S3S SR FO LG

07537..BMGF



**UPPER:**  
water repellent suede and microfiber reinforcements.  
**Additional 2nd color laces included.**

**LINING:**  
breathable micro-perforated 3D fabric.

**REMOVABLE INSOLE:**  
antistatic PU with ergonomic thermoforming.

**ANTI-PERFORATION INSOLE:**  
made from zero-perforation ultralight textile fiber (PS - nail Ø 3.0 mm).

**TOE CAP:**  
non magnetic fiberglass, insulating, resistant to 200J.

**SOLE:**  
PU dual density with absorption of energy on the heel + LG.

**SIZES:**  
35-48 (UK 2 ½ -13)

## RICHMOND ESD S3S SR FO LG

07541..BMGF



**UPPER:**  
water repellent nubuck and microfiber reinforcements.  
**Additional 2nd color laces included.**

**LINING:**  
breathable micro-perforated 3D fabric.

**REMOVABLE INSOLE:**  
antistatic PU with ergonomic thermoforming.

**ANTI-PERFORATION INSOLE:**  
made from zero-perforation ultralight textile fiber (PS - nail Ø 3.0 mm).

**TOE CAP:**  
non magnetic fiberglass, insulating, resistant to 200J.

**SOLE:**  
PU dual density with absorption of energy on the heel + LG.

**SIZES:**  
35-48 (UK 2 ½ -13)

## CHARLOTTE ESD S3S SR FO LG

07537..GSAZ



**UPPER:**  
water repellent suede and microfiber reinforcements.  
**Additional 2nd color laces included.**

**LINING:**  
breathable micro-perforated 3D fabric.

**REMOVABLE INSOLE:**  
antistatic PU with ergonomic thermoforming.

**ANTI-PERFORATION INSOLE:**  
made from zero-perforation ultralight textile fiber (PS - nail Ø 3.0 mm).

**TOE CAP:**  
non magnetic fiberglass, insulating, resistant to 200J.

**SOLE:**  
PU dual density with absorption of energy on the heel + LG.

**SIZES:**  
35-48 (UK 2 ½ -13)

## DANICA ESD S3S SR FO LG

07537..GRFU



**UPPER:**  
water repellent suede and microfiber reinforcements.  
**Additional 2nd color laces included.**

**LINING:**  
breathable micro-perforated 3D fabric.

**REMOVABLE INSOLE:**  
antistatic PU with ergonomic thermoforming.

**ANTI-PERFORATION INSOLE:**  
made from zero-perforation ultralight textile fiber (PS - nail Ø 3.0 mm).

**TOE CAP:**  
non magnetic fiberglass, insulating, resistant to 200J.

**SOLE:**  
PU dual density with absorption of energy on the heel + LG.

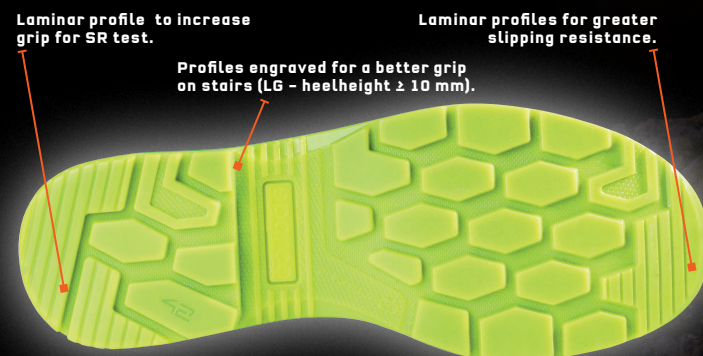
**SIZES:**  
35-43 (UK 2 ½ -9)



# NEW LINE INDY NUBUCK LINE

**SAFETY FOOTWEAR** COMPLIANT WITH THE NEW **EN ISO 20345:2022**,  
IN SOFT **TUMBLLED NUBUCK**, "**FLEXGRIP+**" **BI-DENSITY POLYURETHANE**  
SOLE WITH SPECIAL HEEL COMPLIANT WITH THE REQUIREMENTS  
FOR LADDER GRIP - LG.

**ELEGANT, SOFT AND RESISTANT**, PERFECT IN ANY CONDITION.



"**FLEXGRIP+**" **BI-DENSITY PU SOLE** WITH  
SPECIAL HEEL COMPLIANT WITH THE  
REQUIREMENTS FOR LADDER GRIP (LG).



**NEW**  
CE EN ISO 20345:2022



**PS** | Perforation resistance (min.1100 N & each single value ≥950 N) non-metal insert: d=3.0mm Conical Nail.

**SR** | Slip resistance - on ceramic tile floor with glycerine.

**LG** | Ladder grip.

**P. 93**



## CONOR **ESD** S3S SR FO LG

**07543..GSGF**



**UPPER:**  
water repellent nubuck  
and microfiber reinforcements.  
**Additional 2nd color laces included.**

**LINING:**  
breathable micro-perforated 3D fabric.

**REMOVABLE INSOLE:**  
antistatic PU with ergonomic thermoforming.

**ANTI-PERFORATION INSOLE:**  
made from zero-perforation ultralight  
textile fiber (PS - nail Ø 3.0 mm).

**TOE CAP:**  
non magnetic fiberglass,  
insulating, resistant to 200J.

**SOLE:**  
PU dual density with absorption  
of energy on the heel + LG.

**SIZES:**  
35-48 (UK 2 ½ -13)

## JURI **ESD** S3S SR FO LG

**07544..GSGF**



**UPPER:**  
water repellent nubuck  
and microfiber reinforcements.  
**Additional 2nd color laces included.**

**LINING:**  
breathable micro-perforated 3D fabric.

**REMOVABLE INSOLE:**  
antistatic PU with ergonomic thermoforming.

**ANTI-PERFORATION INSOLE:**  
made from zero-perforation ultralight  
textile fiber (PS - nail Ø 3.0 mm).

**TOE CAP:**  
non magnetic fiberglass,  
insulating, resistant to 200J.

**SOLE:**  
PU dual density with absorption  
of energy on the heel + LG.

**SIZES:**  
35-48 (UK 2 ½ -13)



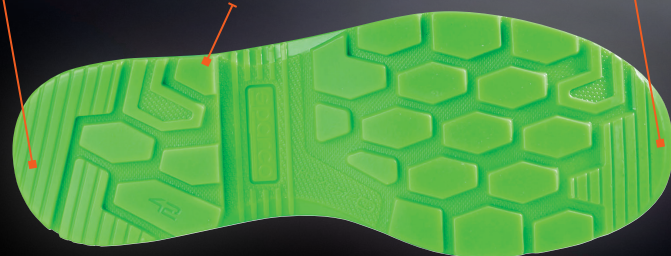
**SAFETY FOOTWEAR COMPLIANT WITH THE NEW EN ISO 20345:2022, MADE OF SPECIAL REGENERATED ANTI-ABRASION MATERIAL SPARCO® FULL EFFICIENCY WITH HF REINFORCEMENT ON THE TOE, "FLEXGRIP+" BI-DENSITY PU SOLE WITH SPECIAL HEEL COMPLIANT WITH THE REQUIREMENTS FOR LADDER GRIP (LG), LIGHTWEIGHT, ENVIRONMENTALLY FRIENDLY AND RESISTANT FOR ANY WORK ENVIRONMENTS.**



Laminar profile to increase grip for SR test.

Laminar profiles for greater slipping resistance.

Profiles engraved for a better grip on stairs (LG - heel height ≥ 10 mm).



**FLEXGRIP+**

**"FLEXGRIP+" BI-DENSITY PU SOLE WITH SPECIAL HEEL COMPLIANT WITH THE REQUIREMENTS FOR LADDER GRIP (LG).**



**NEW**

**CE EN ISO 20345:2022**

**PS** | Perforation resistance (min.1100 N & each single value ≥950 N) non-metal insert: d=3.0mm Conical Nail.

**SR** | Slip resistance - on ceramic tile floor with glycerine.

**LG** | Ladder grip.

**P. 93**

Its attention to detail, care devoted to the choice of **sustainable materials** and its construction of models totally styled, designed and validated in Italy has allowed **SPARCO** to develop the **FULL EFFICIENCY** project, whose basic principles are:

- VIRTUOUS CIRCULAR PRODUCTION CYCLE
- ZERO WASTE TARGET
- CORPORATE SOCIAL RESPONSABILITY
- FULLY OWNED TECHNOLOGY

## FORESTER **ESD** S3S SR FO LG

**07540..NRVF**



**UPPER:**  
special regenerated anti-abrasion material  
**Sparco® FULL EFFICIENCY** with HF reinforcement on the toe.  
**Additional 2nd color laces included.**

**LINING:**  
breathable micro-perforated 3D fabric.

**REMOVABLE INSOLE:**  
antistatic PU with ergonomic thermoforming.

**ANTI-PERFORATION INSOLE:**  
made from zero-perforation ultralight textile fiber  
(PS - nail Ø 3.0 mm).

**TOE CAP:**  
non magnetic fiberglass,  
insulating, resistant to 200J.

**SOLE:**  
PU dual density with absorption  
of energy on the heel + LG.

**SIZES:**  
35-48 (UK 2 ½ -13)

## RANGER **ESD** S3S SR FO LG

**07542..NRVF**



**UPPER:**  
special regenerated anti-abrasion material  
**Sparco® FULL EFFICIENCY** with HF reinforcement on the toe.  
**Additional 2nd color laces included.**

**LINING:**  
breathable micro-perforated 3D fabric.

**REMOVABLE INSOLE:**  
antistatic PU with ergonomic thermoforming.

**ANTI-PERFORATION INSOLE:**  
made from zero-perforation ultralight textile fiber  
(PS - nail Ø 3.0 mm).

**TOE CAP:**  
non magnetic fiberglass,  
insulating, resistant to 200J.

**SOLE:**  
PU dual density with absorption  
of energy on the heel + LG.

**SIZES:**  
35-48 (UK 2 ½ -13)



# LINE PRACTICE LINE

**RUNNING-STYLE SAFETY FOOTWEAR MADE OF BREATHABLE MICRO-PERFORATED 3D FABRIC AND SCRATCH-RESISTANT MICROFIBRE. LIGHT AND BREATHABLE, PERFECT FOR INDOOR USE OR HOT WEATHER.**

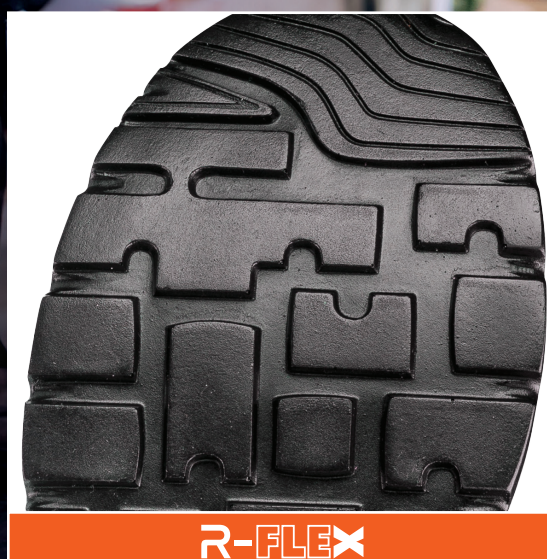
Laminar profiles to increase grip.

Laminar profiles for greater slipping resistance.

Profiles engraved for a better grip on the stairs.



**ULTRA-FLEXIBLE SINGLE-DENSITY PU THAT INCREASES COMFORT AND REDUCES STRESS TO THE LOWER LIMBS AND THE SPINE.**



**R-FLEX**

CE EN ISO 20345:2011



## JOS ESD S1P SRC

07517..NRGF



**UPPER:**  
breathable micro-perforated fabric and scratch-resistant microfibre with high abrasion resistance.

**LINING:**  
breathable micro-perforated 3D fabric.

**REMOVABLE INSOLE:**  
antistatic in PU with ergonomic thermoforming.

**ANTI-PERFORATION INSOLE:**  
made from zero-perforation textile fibre.

**TOE CAP:**  
non magnetic composite, insulating, resistant to 200J.

**SOLE:**  
single-density PU with energy absorption on the heel.

**SIZES:**  
36-48 (UK 3 ½ -13)

## NIGEL ESD S1P SRC

07517..NRNR



**UPPER:**  
breathable micro-perforated fabric and scratch-resistant microfibre with high abrasion resistance.

**LINING:**  
breathable micro-perforated 3D fabric.

**REMOVABLE INSOLE:**  
antistatic in PU with ergonomic thermoforming.

**ANTI-PERFORATION INSOLE:**  
made from zero-perforation textile fibre.

**TOE CAP:**  
non magnetic composite, insulating, resistant to 200J.

**SOLE:**  
single-density PU with energy absorption on the heel.

**SIZES:**  
36-48 (UK 3 ½ -13)



## KEKE ESD S1P SRC

07517..NRVF



**UPPER:**  
breathable micro-perforated fabric and scratch-resistant microfibre with high abrasion resistance.

**LINING:**  
breathable micro-perforated 3D fabric.

**REMOVABLE INSOLE:**  
antistatic in PU with ergonomic thermoforming.

**ANTI-PERFORATION INSOLE:**  
made from zero-perforation textile fibre.

**TOE CAP:**  
non magnetic composite, insulating, resistant to 200J.

**SOLE:**  
single-density PU with energy absorption on the heel.

**SIZES:**  
36-48 (UK 3 ½ -13)

## NELSON ESD S1P SRC

07517..NRAZ



**UPPER:**  
breathable micro-perforated fabric and scratch-resistant microfibre with high abrasion resistance.

**LINING:**  
breathable micro-perforated 3D fabric.

**REMOVABLE INSOLE:**  
antistatic in PU with ergonomic thermoforming.

**ANTI-PERFORATION INSOLE:**  
made from zero-perforation textile fibre.

**TOE CAP:**  
non magnetic composite, insulating, resistant to 200J.

**SOLE:**  
single-density PU with energy absorption on the heel.

**SIZES:**  
36-48 (UK 3 ½ -13)

## JODY ESD S1P SRC

07517..NRFU



**UPPER:**  
breathable micro-perforated fabric and scratch-resistant microfibre with high abrasion resistance.

**LINING:**  
breathable micro-perforated 3D fabric.

**REMOVABLE INSOLE:**  
antistatic in PU with ergonomic thermoforming.

**ANTI-PERFORATION INSOLE:**  
made from zero-perforation textile fibre.

**TOE CAP:**  
non magnetic composite, insulating, resistant to 200J.

**SOLE:**  
single-density PU with energy absorption on the heel.

**SIZES:**  
36-43 (UK 3 ½ -9)





# LINE NITRO LINE

## RUNNING-STYLE SAFETY FOOTWEAR

MADE OF WATER-REPELLENT MICROFIBRE AND SUEDE,  
IDEAL FOR BOTH INDOOR AND OUTDOOR USE.



ULTRA-FLEXIBLE SINGLE-DENSITY PU  
THAT INCREASES COMFORT  
AND REDUCES STRESS TO THE LOWER  
LIMBS AND THE SPINE.

## DIDIER ESD S3 SRC

07522..NRGR



**UPPER:**  
high-quality water-repellent microfibre.  
**LINING:**  
breathable micro-perforated 3D fabric.  
**REMOVABLE INSOLE:**  
antistatic in PU with  
ergonomic thermoforming.  
**ANTI-PERFORATION INSOLE:**  
made from zero-perforation textile fibre.  
**TOE CAP:**  
non magnetic composite,  
insulating, resistant to 200J.  
**SOLE:**  
single-density PU with energy  
absorption on the heel.  
**SIZES:**  
36-48 (UK 3 ½ -13)

## MARCUS ESD S3 SRC

07522..RSNR



**UPPER:**  
high-quality water-repellent microfibre and suede.  
**LINING:**  
breathable micro-perforated 3D fabric.  
**REMOVABLE INSOLE:**  
antistatic in PU with  
ergonomic thermoforming.  
**ANTI-PERFORATION INSOLE:**  
made from zero-perforation textile fibre.  
**TOE CAP:**  
non magnetic composite,  
insulating, resistant to 200J.  
**SOLE:**  
single-density PU with energy  
absorption on the heel.  
**SIZES:**  
36-48 (UK 3 ½ -13)

## PETTER ESD S3 SRC

07522..NRAZ



**UPPER:**  
high-quality water-repellent microfibre.  
**LINING:**  
breathable micro-perforated 3D fabric.  
**REMOVABLE INSOLE:**  
antistatic in PU with  
ergonomic thermoforming.  
**ANTI-PERFORATION INSOLE:**  
made from zero-perforation textile fibre.  
**TOE CAP:**  
non magnetic composite,  
insulating, resistant to 200J.  
**SOLE:**  
single-density PU with energy  
absorption on the heel.  
**SIZES:**  
36-48 (UK 3 ½ -13)



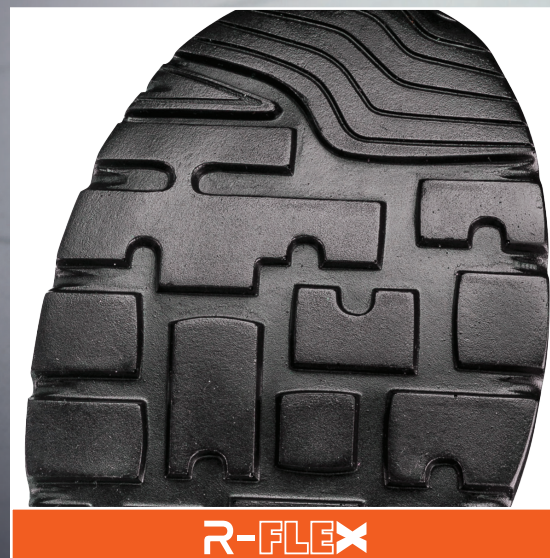
# LINE NITRO LINE

## RUNNING-STYLE SAFETY FOOTWEAR

MADE OF WATER-REPELLENT LEATHER,  
IDEAL FOR BOTH INDOOR AND OUTDOOR USE.



ULTRA-FLEXIBLE SINGLE-DENSITY PU  
THAT INCREASES COMFORT AND REDUCES  
STRESS TO THE LOWER LIMBS  
AND THE SPINE.



CE EN ISO 20345:2011



### HANNU ESD S3 SRC

07522..BIBI



**UPPER:**  
high-quality water-repellent smooth leather.

**LINING:**  
breathable micro-perforated 3D fabric.

**REMOVABLE INSOLE:**  
antistatic in PU with ergonomic thermoforming.

**ANTI-PERFORATION INSOLE:**  
made from zero-perforation textile fibre.

**TOE CAP:**  
non magnetic composite,  
insulating, resistant to 200J.

**SOLE:**  
single-density PU with energy  
absorption on the heel.

**SIZES:**  
36-48 (UK 3 ½ -13)

### MIKKO ESD S3 SRC

07522..NRNR



**UPPER:**  
high-quality water-repellent smooth leather.

**LINING:**  
breathable micro-perforated 3D fabric.

**REMOVABLE INSOLE:**  
antistatic in PU with ergonomic thermoforming.

**ANTI-PERFORATION INSOLE:**  
made from zero-perforation textile fibre.

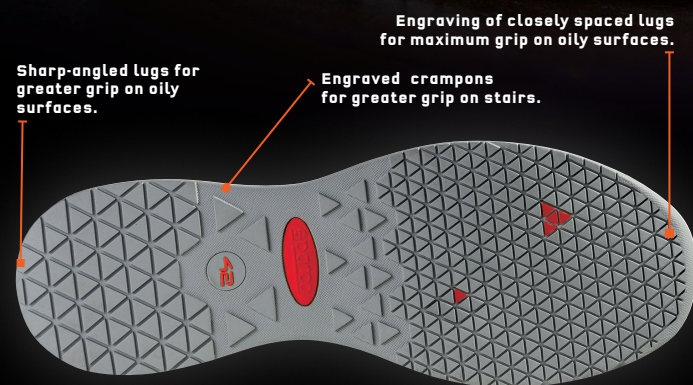
**TOE CAP:**  
non magnetic composite,  
insulating, resistant to 200J.

**SOLE:**  
single-density PU with energy  
absorption on the heel.

**SIZES:**  
36-48 (UK 3 ½ -13)



**SAFETY FOOTWEAR MADE OF BREATHABLE JACQUARD FABRIC AND REINFORCEMENT IN PU FILM COATED ON THE TOE, IDEAL FOR INDOOR USE.**



**ULTRALIGHT EVA MIDSOLE AND NITRILE RUBBER TREAD WITH ENERGY ABSORPTION ON THE HEEL.**



**ALBERT ESD S1P SRC**

**07526..NRRS**



**UPPER:**  
Ultra-breathable jacquard weave with PU film reinforcement coating on the toe.

**LINING:**  
breathable micro-perforated 3D fabric.

**REMOVABLE INSOLE:**  
antistatic in PU with ergonomic thermoforming.

**ANTI-PERFORATION INSOLE:**  
made from zero-perforation textile fibre.

**TOE CAP:**  
non magnetic composite, insulating, resistant to 200J.

**SOLE:**  
EVA midsole and nitrile rubber tread with energy absorption on heel.

**SIZES:**  
35-46 (UK 2 ½ - 11 ½)

**RICARD ESD S1P SRC**

**07526..NRAZ**



**UPPER:**  
Ultra-breathable jacquard weave with PU film reinforcement coating on the toe.

**LINING:**  
breathable micro-perforated 3D fabric.

**REMOVABLE INSOLE:**  
antistatic in PU with ergonomic thermoforming.

**ANTI-PERFORATION INSOLE:**  
made from zero-perforation textile fibre.

**TOE CAP:**  
non magnetic composite, insulating, resistant to 200J.

**SOLE:**  
EVA midsole and nitrile rubber tread with energy absorption on heel.

**SIZES:**  
35-46 (UK 2 ½ - 11 ½)

**NURBURG ESD S1P SRC**

**07526..NRGF**



**UPPER:**  
Ultra-breathable jacquard weave with PU film reinforcement coating on the toe.

**LINING:**  
breathable micro-perforated 3D fabric.

**REMOVABLE INSOLE:**  
antistatic in PU with ergonomic thermoforming.

**ANTI-PERFORATION INSOLE:**  
made from zero-perforation textile fibre.

**TOE CAP:**  
non magnetic composite, insulating, resistant to 200J.

**SOLE:**  
EVA midsole and nitrile rubber tread with energy absorption on heel.

**SIZES:**  
35-46 (UK 2 ½ - 11 ½)



# LINE ALLROAD LINE

**SAFETY FOOTWEAR MADE OF FINE NUBUCK, SUEDE LEATHER OR MICROFIBRE WATER-REPELLENT WITH NYLON COLLAR. PHYLON MIDSOLE WITH CROSSGRIP HRO RUBBER TREAD. LIGHT, PRECIOUS AND DURABLE, THEY ARE SUITABLE FOR BOTH OUTDOOR AND INDOOR USE.**



**ULTRALIGHT SOLE WITH PHYLON\* MIDSOLE AND CROSSGRIP RUBBER TREAD. IT FEATURES AN IDEAL SCULPTURE FOR MAXIMUM GRIP AND STABILISATION ON GRAVELLY, MUDDY AND SNOW-COVERED SURFACES. LIGHT AND COMFORTABLE, IT ABSORBS VIBRATIONS AND PREVENTS DAMAGE TO THE LOWER LIMBS AND THE SPINE.**

**NEW**

CE EN ISO 20345:2022



\* Phylon is a light and resistant plastic made with EVA foam obtained by injection of compressed air.

## SOCHI **ESD** S3S SR FO HRO

07528..BMGF



**UPPER:**  
nylon and water-repellent microfibre.

**LINING:**  
breathable micro-perforated 3D fabric.

**REMOVABLE INSOLE:**  
antistatic in PU with ergonomic thermoforming.

**ANTI-PERFORATION INSOLE:**  
made from zero-perforation textile fibre.

**TOE CAP:**  
non magnetic composite, insulating, resistant to 200J.

**SOLE:**  
phylon + nitrile rubber with energy absorption on the heel.

**SIZES:**  
38-48 (UK 5 - 13)

## MOTEGI **ESD** S3S SR FO HRO

07529..NRGF



**UPPER:**  
nylon and water-repellent microfibre.

**LINING:**  
breathable micro-perforated 3D fabric.

**REMOVABLE INSOLE:**  
antistatic in PU with ergonomic thermoforming.

**ANTI-PERFORATION INSOLE:**  
made from zero-perforation textile fibre.

**TOE CAP:**  
non magnetic composite, insulating, resistant to 200J.

**SOLE:**  
phylon + HRO nitrile rubber with energy absorption on the heel.

**SIZES:**  
38-48 (UK 5 - 13)



## STIRIA ESD S3S SR FO HRO

07528..NRNR



**UPPER:**  
nylon and water-repellent microfibre.

**LINING:**  
breathable micro-perforated 3D fabric.

**REMOVABLE INSOLE:**  
antistatic in PU with ergonomic thermoforming.

**ANTI-PERFORATION INSOLE:**  
made from zero-perforation textile fibre.

**TOE CAP:**  
non magnetic composite, insulating, resistant to 200J.

**SOLE:**  
phylon + nitrile rubber with energy absorption on the heel.

**SIZES:**  
38-48 (UK 5 - 13)

## OKAYAMA ESD S3S SR FO HRO

07529..NRNR



**UPPER:**  
nylon and water-repellent microfibre.

**LINING:**  
breathable micro-perforated 3D fabric.

**REMOVABLE INSOLE:**  
antistatic in PU with ergonomic thermoforming.

**ANTI-PERFORATION INSOLE:**  
made from zero-perforation textile fibre.

**TOE CAP:**  
non magnetic composite, insulating, resistant to 200J.

**SOLE:**  
phylon + nitrile rubber with energy absorption on the heel.

**SIZES:**  
38-48 (UK 5 - 13)

## BAKU ESD S3S SR FO HRO

07528..NRVF



**UPPER:**  
nylon and water-repellent microfibre.

**LINING:**  
breathable micro-perforated 3D fabric.

**REMOVABLE INSOLE:**  
antistatic in PU with ergonomic thermoforming.

**ANTI-PERFORATION INSOLE:**  
made from zero-perforation textile fibre.

**TOE CAP:**  
non magnetic composite, insulating, resistant to 200J.

**SOLE:**  
phylon + nitrile rubber with energy absorption on the heel.

**SIZES:**  
38-48 (UK 5 - 13)

## LEAP ESD S3S SR FO HRO

07529..GSVF



**UPPER:**  
nubuck and water-repellent suede, nylon collar.

**LINING:**  
breathable micro-perforated 3D fabric.

**REMOVABLE INSOLE:**  
antistatic PU with ergonomic thermoforming.

**ANTI-PERFORATION INSOLE:**  
made from zero-perforation textile fibre.

**TOE CAP:**  
non magnetic composite, insulating, resistant to 200J.

**SOLE:**  
phylon + HRO nitrile rubber with energy absorption on the heel.

**SIZES:**  
38-48 (UK 5 - 13)

## ROC ESD S3S SR FO HRO

07528..TAGI



**UPPER:**  
nubuck and water-repellent suede, nylon collar.

**LINING:**  
breathable micro-perforated 3D fabric.

**REMOVABLE INSOLE:**  
antistatic PU with ergonomic thermoforming.

**ANTI-PERFORATION INSOLE:**  
made from zero-perforation textile fibre.

**TOE CAP:**  
non magnetic composite, insulating, resistant to 200J.

**SOLE:**  
phylon + HRO nitrile rubber with energy absorption on the heel.

**SIZES:**  
38-48 (UK 5 - 13)

## STONE ESD S3S SR FO HRO

07529..TAGI



**UPPER:**  
nubuck and water-repellent suede, nylon collar.

**LINING:**  
breathable micro-perforated 3D fabric.

**REMOVABLE INSOLE:**  
antistatic PU with ergonomic thermoforming.

**ANTI-PERFORATION INSOLE:**  
made from zero-perforation textile fibre.

**TOE CAP:**  
non magnetic composite, insulating, resistant to 200J.

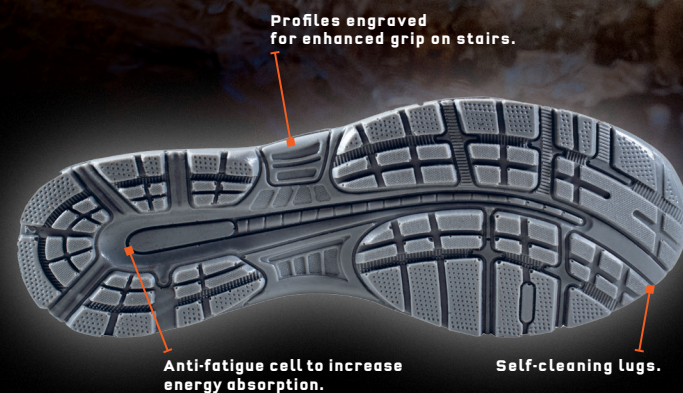
**SOLE:**  
phylon + HRO nitrile rubber with energy absorption on the heel.

**SIZES:**  
38-48 (UK 5 - 13)



# LINE ARCTIC LINE

**SAFETY ANKLE BOOTS** WITH SPECIAL DRY RESPIRATION SYSTEM (**DRS**) WATER-RESISTANT MEMBRANE, MADE OF HIGH-QUALITY WATER-REPELLENT MICROFIBRE AND MICRO-INJECTED INSERTS. HARD-WEARING AND BREATHABLE, IT IS IDEAL IN PARTICULARLY DAMP OR WET ENVIRONMENTS.



**SOLE IN DUAL-DENSITY POLYURETHANE WITH ENERGY ABSORPTION ON THE HEEL.**



CE EN ISO 20345:2011

## ARCTIC S3 WR SRC

07533..NRAZ



**UPPER:**  
high-quality water-repellent microfibre, micro-injected inserts and special DRS WATER-RESISTANT membrane.

**LINING:**  
breathable micro-perforated 3D fabric.

**REMOVABLE INSOLE:**  
antistatic in PU.

**ANTI-PERFORATION INSOLE:**  
made from zero-perforation textile fibre.

**TOE CAP:**  
fibreglass, non-magnetic, insulating, resistant to 200J.

**SOLE:**  
dual-density polyurethane with energy absorption on the heel.

**SIZES:**  
36-47 (UK 3 1/2 -12)

Footwear designed for all those who are forced to work in environments characterised by a high presence of water. WR footwear is in fact made with materials and techniques that prevent the entry of water while guaranteeing excellent breathability and therefore perfect hygrothermal comfort.

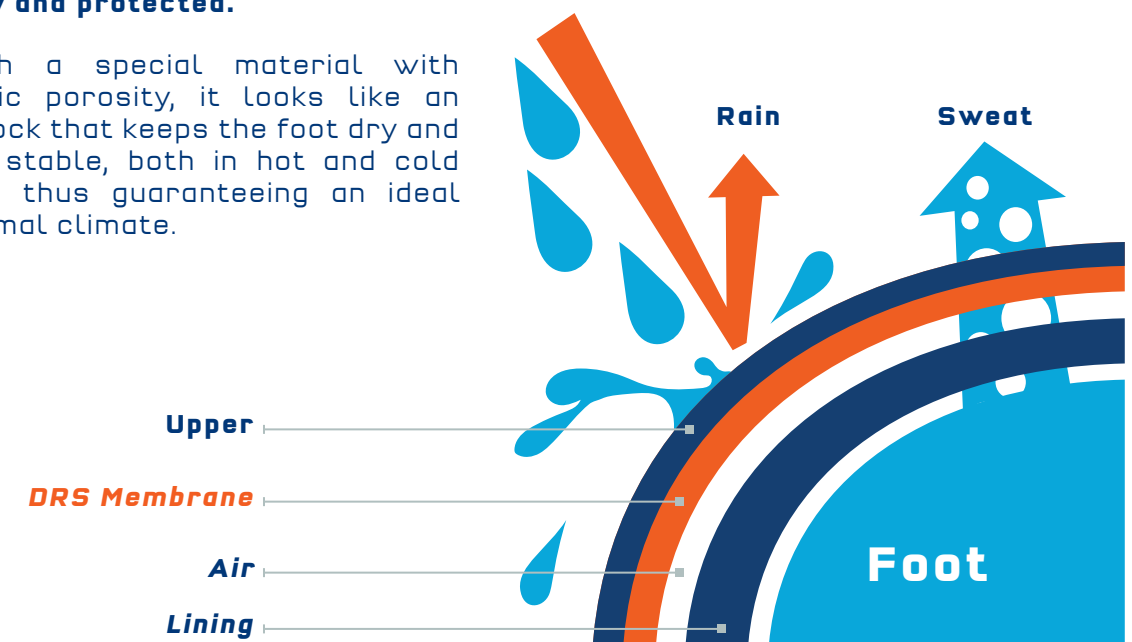
**WALK TEST**  
(according to EN ISO 20345:2011)  
1,000 steps (about 20 min.) in a tank containing 3 cm of water, the wet internal surface must be  $\leq 3 \text{ cm}^2$ .



### DRS MEMBRANE BY SPARCO TEAMWORK (DRY RESPIRATION SYSTEM):

The special **DRS** membrane by **SPARCO TEAMWORK** ensures maximum breathability and comfort while preventing water from penetrating into the upper, leaving the feet always dry and protected.

Made with a special material with microscopic porosity, it looks like an invisible sock that keeps the foot dry and thermally stable, both in hot and cold conditions, thus guaranteeing an ideal hygrothermal climate.





# LINE CHALLENGE LINE

**SAFETY FOOTWEAR MADE OF NYLON AND SUEDE.  
DURABLE AND SUITABLE FOR ANY CONDITION  
(OUTDOOR AND INDOOR).**



**SOLE IN DUAL-DENSITY  
POLYURETHANE WITH ENERGY  
ABSORPTION ON THE HEEL.**



## HINWIL ESD S1P SRC

07519..NRNR



**UPPER:**  
abrasion resistant fine suede.

**LINING:**  
breathable micro-perforated 3D fabric.

**REMOVABLE INSOLE:**  
antistatic in PU

**ANTI-PERFORATION INSOLE:**  
made from zero-perforation textile fibre.

**TOE CAP:**  
non magnetic composite, insulating,  
resistant to 200J.

**SOLE:**  
dual-density polyurethane  
with energy absorption on the heel.

**SIZES:**  
36-49 (UK 3 1/2 -14)

## WOKING ESD S1P SRC

07519..NRRS



**UPPER:**  
abrasion resistant fine suede.

**LINING:**  
breathable micro-perforated 3D fabric.

**REMOVABLE INSOLE:**  
antistatic in PU

**ANTI-PERFORATION INSOLE:**  
made from zero-perforation textile fibre.

**TOE CAP:**  
non magnetic composite, insulating,  
resistant to 200J.

**SOLE:**  
dual-density polyurethane  
with energy absorption on the heel.

**SIZES:**  
36-48 (UK 3 1/2 -13)

## ZELTWEG ESD S3 SRC

07524..NRNR



**UPPER:**  
water penetration-resistant nylon and suede.

**LINING:**  
breathable micro-perforated 3D fabric.

**REMOVABLE INSOLE:**  
antistatic in PU

**ANTI-PERFORATION INSOLE:**  
made from zero-perforation textile fibre.

**TOE CAP:**  
non magnetic composite, insulating,  
resistant to 200J.

**SOLE:**  
dual-density polyurethane  
with energy absorption on the heel.

**SIZES:**  
36-48 (UK 3 1/2 -13)



# LINE TORQUE LINE

**ULTRALIGHT, FLEXIBLE AND BREATHABLE OCCUPATIONAL FOOTWEAR.** DESIGNED FOR WORK WHERE THE RISK ANALYSIS REQUIRES **NEITHER A PROTECTIVE TOE NOR AN ANTI-PERFORATION PLATE**, IN COMPLIANCE WITH THE SAFETY AND HEALTH REQUIREMENTS OF THE EN ISO 20347:2012 STANDARD - CE MARKING, THEY GIVE THE USER MAXIMUM COMFORT AND SPORTY STYLE.

CE EN ISO 20347:2012



**ULTRALIGHT SOLE WITH PHYLON\* MIDSOLE AND RUBBER TREAD.**

\* Phylon is a light and resistant plastic made with EVA foam obtained by injection of compressed air.

## PALMA 01 FO SRA

001289..NRNR



**UPPER:**  
breathable micro-perforated fabric, micro-injected reinforcement on ultra-abrasion-resistant toe.

**LINING:**  
breathable micro-perforated 3D fabric.

**INSOLE:**  
breathable in memory foam.

**SOLE:**  
phylon midsole and nitrile rubber tread.

**SIZES:**  
37-47 (UK 4 ½ - 12)

## DURANGO 01 FO SRA

001289..NRAZ



**UPPER:**  
breathable micro-perforated fabric, micro-injected reinforcement on ultra-abrasion-resistant toe.

**LINING:**  
breathable micro-perforated 3D fabric.

**INSOLE:**  
breathable in memory foam.

**SOLE:**  
phylon midsole and nitrile rubber tread.

**SIZES:**  
37-47 (UK 4 ½ - 12)



# LINE TORQUE MARTINI RACING LINE

**ULTRALIGHT, FLEXIBLE AND BREATHABLE OCCUPATIONAL FOOTWEAR IN MARTINI RACING LIVRY. DESIGNED FOR WORK WHERE THE RISK ANALYSIS REQUIRES NEITHER A PROTECTIVE TOE NOR AN ANTI-PERFORATION PLATE, TO GIVE THE USER MAXIMUM COMFORT IN COMPLIANCE WITH THE SAFETY AND HEALTH REQUIREMENTS OF THE EN ISO 20347:2012 STANDARD - CE MARKING.**

**MARTINI  
RACING**

OFFICIAL LICENSED PRODUCTS



**ULTRALIGHT SOLE WITH PHYLON\* MIDSOLE AND RUBBER TREAD.**

\* Phylon is a light and resistant plastic made with EVA foam obtained by injection of compressed air.



**TWISTTECH**

CE EN ISO 20347:2012

MIKI 01 FO SRA

01289MR..BM



**UPPER:**  
breathable micro-perforated fabric, micro-injected reinforcement on ultra-abrasion-resistant toe.

**LINING:**  
breathable micro-perforated 3D fabric.

**INSOLE:**  
breathable in memory foam.

**SOLE:**  
phylon midsole and nitrile rubber tread.

**SIZES:**  
37-47 (UK 4 1/2 - 12)

HOODIE REPLICA **MARTINI RACING**

01279MR..



**SPECIFICATIONS:**  
Hooded sweatshirt made with an ultra-soft cotton blend featuring the iconic Martini Racing livery. The logo patches and stripes are fully embroidered.

**MATERIAL:**  
65% cotton  
35% polyester 300 gr. m²  
hood lined in soft jersey.

**SIZES:**  
S-3XL

Visit  
[sparco-official.com](http://sparco-official.com)





WORKWEAR  
**WORKWEAR**  
WORKWEAR



# WADWWE AD TECH SOFT-SHELL WORK WEAR



NEW

CE EN ISO 13688:2022

CAT.1

YORK  
BLACK/ORANGE

02412NRAF..

NEW

**TECH SOFT-SHELL****WEIGHT:** 330 gr/m²**COMPOSITION:**Outer 93% polyester, 7% spandex  
Inside 100% polyester (polar fleece)**SIZES:** XS-3XL**SPECIFICATIONS:**

- Reinforcement inserts on shoulders and sleeves made of anti-abrasion material.
- High visibility reflective strips on the sleeves.
- Removable and foldable hood with double adjustment.
- Elasticated cuffs.
- Compliant to the EN ISO 13688:2022 - CAT.1.

YORK  
GREY/YELLOW

02412GSGF..

**SIZES:** XS-3XLYORK  
NAVY/ORANGE

02412BMAF..

**SIZES:** XS-3XLYORK  
BLACK/GREY

02412NRGS..

**SIZES:** XS-3XLYORK  
NAVY/ROYAL

02412BMAZ..

**SIZES:** XS-3XL



# WADWAVE AD TECH LIGHT-SHELL WORKWEAR



NEW

CE EN ISO 13688:2022

CAT.1

AUSTIN  
BLACK/ORANGE

02413NRAF..

NEW



TECH LIGHT-SHELL

WEIGHT: 240 g/m²

COMPOSITION: 90% nylon - 10% spandex

SIZES: XS-3XL

SPECIFICATIONS:

- Reinforced sleeves with anti-abrasion inserts and high visibility reflective strips.
- Coated and waterproof central zip.
- Pocket with zip closure and high visibility puller on the left sleeve.
- Compliant to the EN ISO 13688:2022 - CAT.1.

AUSTIN  
GREY/YELLOW

02413GSGF..

SIZES: XS-3XL

AUSTIN  
NAVY/ORANGE

02413BMAF..

SIZES: XS-3XL

AUSTIN  
BLACK/GREY

02413NRGS..

SIZES: XS-3XL

AUSTIN  
NAVY/ROYAL

02413BMAZ..

SIZES: XS-3XL





# WODKWE AD TECH HOODED FULL ZIP WORK WEAR



NEW

CE EN ISO 13688:2022

CAT.1

COLORADO  
BLACK/ORANGE

02414NRAF..

NEW



TECH HOODED FULL ZIP SWEATSHIRT

WEIGHT: 280 gr/m²

COMPOSITION: 80% cotton - 20% polyester

SIZES: XS-3XL

## SPECIFICATIONS:

- Reinforced sleeves with anti-abrasion inserts and high visibility reflective strips.
- Reinforcement inserts on the shoulders.
- Integrated adjustable hood with colored lining.
- Compliant to the EN ISO 13688:2022 - CAT.1.

COLORADO  
GREY/YELLOW

02414GSGF..

SIZES: XS-3XL

COLORADO  
NAVY/ORANGE

02414BMAF..

SIZES: XS-3XL

COLORADO  
BLACK/GREY

02414NRGS..

SIZES: XS-3XL

COLORADO  
NAVY/ROYAL

02414BMAZ..

SIZES: XS-3XL





**NEW** WORKWEAR  
**TECH FULL ZIP**  
WORKWEAR



**NEW**

CE EN ISO 13688:2022

CAT.1

**ALABAMA**  
BLACK/ORANGE

**02429NRAF..**

**NEW**



**TECH FULL ZIP SWEATSHIRT**

**WEIGHT:** 260 gr/m²

**COMPOSITION:** 80% cotton - 20% polyester

**SIZES:** XS-3XL

**SPECIFICATIONS:**

- Reinforced sleeves with anti-abrasion inserts and high visibility reflective strips.
- Reinforcement inserts on the trapezoid and shoulders.
- Ultra-smooth central zipper.
- Side and sleeve pockets with reverse zip closure.
- Compliant to the EN ISO 13688:2022 - CAT.1.

**ALABAMA**  
GREY/YELLOW

**02429GSGF..**

**NEW**



**SIZES:** XS-3XL

**ALABAMA**  
NAVY/ORANGE

**02429BMAF..**

**NEW**



**SIZES:** XS-3XL

**ALABAMA**  
BLACK/GREY

**02429NRGS..**

**NEW**



**SIZES:** XS-3XL

**ALABAMA**  
NAVY/ROYAL

**02429BMAZ..**

**NEW**



**SIZES:** XS-3XL



# WORKWEAR AD TECH LIGHT VEST WORKWEAR



NEW

CE EN ISO 13688:2022

CAT.1

ILLINOIS  
BLACK/ORANGE

02419NRAF..

NEW

**TECH LIGHT VEST****WEIGHT:** 240 gr/m²**COMPOSITION:** 90% nylon - 10% spandex**SIZES:** XS-3XL**SPECIFICATIONS:**

- Reinforcement inserts on the shoulders made of anti-abrasion material.
- Coated and waterproof central zip.
- High visibility reflective strips on the back.
- Compliant to the EN ISO 13688:2022 - CAT.1.

ILLINOIS  
GREY/YELLOW

02419GSGF..

**SIZES:** XS-3XLILLINOIS  
NAVY/ORANGE

02419BMAF..

**SIZES:** XS-3XLILLINOIS  
BLACK/GREY

02419NRGS..

**SIZES:** XS-3XLILLINOIS  
NAVY/ROYAL

02419BMAZ..

**SIZES:** XS-3XL



# WADWWE AD TECH POLO WORKWEAR



NEW

CE EN ISO 13688:2022

CAT.1

TOLEDO  
BLACK/ORANGE

02415NRAF..

NEW

**TECH POLO****WEIGHT:** 180 gr/m²**COMPOSITION:** 65% cotton,  
35% polyester with piqué effect**SIZES:** XS - 3XL**SPECIFICATIONS:**

- High visibility reflective sleeve strips.
- Contrasting inserts under sleeves and collar.
- Reinforced shoulder inserts.
- Compliant to the EN ISO 13688:2022 - CAT.1.

TOLEDO  
GREY/YELLOW

02415GSGF..

SIZES: XS-3XL

TOLEDO  
NAVY/ORANGE

02415BMAF..

SIZES: XS-3XL

TOLEDO  
BLACK/GREY

02415NRGS..

SIZES: XS-3XL

TOLEDO  
NAVY/ROYAL

02415BMAZ..

SIZES: XS-3XL





# WORKWEAR AD TECH T-SHIRT WORKWEAR



NEW

CE EN ISO 13688:2022

CAT.1

TUCSON  
BLACK/ORANGE

02416NRAF..

NEW

**TECH T-SHIRT****WEIGHT:** 170 gr/m²**COMPOSITION:** 50% cotton,  
50% polyester piqué effect**SIZES:** XS - 3XL**SPECIFICATIONS:**

- High visibility reflective sleeve strips.
- Reinforced shoulder inserts.
- Contrasting inserts under the sleeves and at the waist.
- Compliant to the EN ISO 13688:2022 - CAT.1.

TUCSON  
GREY/YELLOW

02416GSGF..

SIZES: XS-3XL

TUCSON  
NAVY/ORANGE

02416BMAF..

SIZES: XS-3XL

TUCSON  
BLACK/GREY

02416NRGS..

SIZES: XS-3XL

TUCSON  
NAVY/ROYAL

02416BMAZ..

SIZES: XS-3XL





# WADWAVE AD TECH TROUSERS WORK WEAR

NEW

CE EN ISO 13688:2022

CAT.1

OREGON  
BLACK/ORANGE

02417NRAF..

NEW

**TECH TROUSERS****WEIGHT:** 240 gr/m²**COMPOSITION:** 90% nylon - 10% spandex**SIZES:** XS-3XL**SPECIFICATIONS:**

- Anti-abrasion reinforcements on the knees.
- Zip and button closure.
- Hidden side pocket with zip closure.
- Compliant to the EN ISO 13688:2022 - CAT.1.

OREGON  
GREY/YELLOW

02417GSGF..

**SIZES:** XS-3XLOREGON  
NAVY/ORANGE

02417BMAF..

**SIZES:** XS-3XLOREGON  
BLACK/GREY

02417NRGS..

**SIZES:** XS-3XLOREGON  
NAVY/ROYAL

02417NRAZ..

**SIZES:** XS-3XL



# NEW WOODWIDE AD TECH LIGHT TROUSERS WORKWEAR



NEW

CE EN ISO 13688:2022

CAT.1

KANSAS  
BLACK/ORANGE

02425NRAF..

NEW

**TECH LIGHT TROUSERS****WEIGHT:** 170 gr/m²**COMPOSITION:** 90% nylon - 10% spandex**SIZES:** XS-3XL**SPECIFICATIONS:**

- Anti-abrasion reinforcements on the knees.
- Zip and button closure.
- Hidden side pocket with zip closure.
- Compliant to the EN ISO 13688:2022 - CAT.1.

KANSAS  
GREY/YELLOW

02425GSGF..

NEW

**SIZES:** XS-3XLKANSAS  
NAVY/ORANGE

02425BMAF..

NEW

**SIZES:** XS-3XLKANSAS  
BLACK/GREY

02425NRGS..

NEW

**SIZES:** XS-3XLKANSAS  
NAVY/ROYAL

02425NRAZ..

NEW

**SIZES:** XS-3XL



# WADWWE A D TECH DENIM WURK W EAK



NEW

CE EN ISO 13688:2022

CAT.1

DALLAS

02430BS..

NEW



## TECH DENIM JEANS

**WEIGHT:** 240 gr/m²

**COMPOSITION:** 98% cotton - 10% spandex

**SIZES:** XS-3XL

### SPECIFICATIONS:

- Ergonomic construction to facilitate knee movement.
- Tool ring on side pocket.
- Elasticated waist.
- Embroidered details.
- **Compliant to the EN ISO 13688:2022 - CAT.1.**





# WORKWEAR TECH SHORTS WORKWEAR



NEW

CE EN ISO 13688:2022

CAT.1

ATLANTA  
BLACK/ORANGE

02418BMAF..

**TECH SHORTS****WEIGHT:** 240 gr/m²**COMPOSITION:** 90% nylon - 10% spandex**SIZES:** XS-3XL**SPECIFICATIONS:**

- Zip and button closure.
- Hidden side pocket with zip closure.
- Badge holder ring on the front left belt loop.
- High visibility reflective strips.
- Compliant to the EN ISO 13688:2022 - CAT.1.

ATLANTA  
GREY/YELLOW

02418GSGF..

**SIZES:** XS-3XLATLANTA  
NAVY/ROYAL

02418NRAZ..

**SIZES:** XS-3XLATLANTA  
BLACK/GREY

02418NRGS..

**SIZES:** XS-3XL



NEW

# WADWAVE A D TECH LIGHT SHORTS WORKWEAR



NEW  
CE EN ISO 13688:2022  
CAT.1

LAREDO  
BLACK/ORANGE

02428NRAF..

NEW



## TECH LIGHT SHORTS

**WEIGHT:** 170 gr/m²

**COMPOSITION:** 90% nylon - 10% spandex

**SIZES:** XS-3XL

### SPECIFICATIONS:

- Zip and button closure.
- Hidden side pocket with zip closure.
- Badge holder ring on the front left belt loop.
- High visibility reflective strips.
- Compliant to the EN ISO 13688:2022 - CAT.1.

LAREDO  
GREY/YELLOW

02428GSGF..

NEW



**SIZES:** XS-3XL

LAREDO  
NAVY/ORANGE

02428BMAF..

NEW



**SIZES:** XS-3XL

LAREDO  
BLACK/GREY

02428NRGS..

NEW



**SIZES:** XS-3XL

LAREDO  
NAVY/ROYAL

02428NRAZ..

NEW



**SIZES:** XS-3XL



**BOSTON BLACK****02400NR..****CARGO MULTISEASON TROUSERS****WEIGHT:** 260/270 gr/m²**COMPOSITION:** 98% drill cotton • 2% elastane**SIZES:** S - 3XL**SPECIFICATIONS:**

- Soft stretch drill cotton.
- Closing flap with contrasting interior and elasticated sides.
- Multi-pocket.

**BOSTON GREY****02400GS..****CARGO MULTISEASON TROUSERS****WEIGHT:** 260/270 gr/m²**COMPOSITION:** 98% drill cotton • 2% elastane**SIZES:** S - 3XL**SPECIFICATIONS:**

- Soft stretch drill cotton.
- Closing flap with contrasting interior and elasticated sides.
- Multi-pocket.

**WILSON ROYAL****02405AZ..****WINDSTOPPER JACKET****WEIGHT:** 100 gr/m²**COMPOSITION:** 100% polyester**SIZES:** S - 3XL**SPECIFICATIONS:**

- Soft and lightweight water-repellent Polyester fabric.
- Coated zips with rubbered pullers.
- Elastic cuffs and hem.

**WILSON NAVY****02405BM..****WINDSTOPPER JACKET****WEIGHT:** 100 gr/m²**COMPOSITION:** 100% polyester**SIZES:** S - 3XL**SPECIFICATIONS:**

- Soft and lightweight water-repellent Polyester fabric.
- Coated zips with rubbered pullers.
- Elastic cuffs and hem.

**BERMUDA BLACK****02410NR..****BERMUDA CARGO****WEIGHT:** 220 gr/m²**COMPOSITION:** 97% cotton 3% elastane lycra gabardin**SIZES:** S - 2XL**SPECIFICATIONS:**

- Soft and resistant stretch cotton fabric with contrast reinforcement stitching.
- Flap closure at the waist with snap button, contrasting interior and elastic at the sides.
- Multi-pocket.

**BERMUDA GREY****02410GS..****BERMUDA CARGO****WEIGHT:** 220 gr/m²**COMPOSITION:** 97% cotton 3% elastane lycra gabardin**SIZES:** S - 2XL**SPECIFICATIONS:**

- Soft and resistant stretch cotton fabric with contrast reinforcement stitching.
- Flap closure at the waist with snap button, contrasting interior and elastic at the sides.
- Multi-pocket.

**WILSON BLACK****02405NR..****WINDSTOPPER JACKET****WEIGHT:** 100 gr/m²**COMPOSITION:** 100% polyester**SIZES:** S - 3XL**SPECIFICATIONS:**

- Soft and lightweight water-repellent Polyester fabric.
- Coated zips with rubbered pullers.
- Elastic cuffs and hem.

**WILSON RED****02405RS..****WINDSTOPPER JACKET****WEIGHT:** 100 gr/m²**COMPOSITION:** 100% polyester**SIZES:** S - 3XL**SPECIFICATIONS:**

- Soft and lightweight water-repellent Polyester fabric.
- Coated zips with rubbered pullers.
- Elastic cuffs and hem.





WORK GLOVES  
WORK GLOVES  
WORK GLOVES



## MECA III



002093..BMAF

002093..NRGF



002093..NR

002093..RS

002093..AZ

## WORK GLOVES

## COMPOSITION:

- 47% polyester
- 35% suede
- 18% elastane

**SIZES:**  
S - XL

## SPECIFICATIONS:

- abrasion-resistant synthetic leather palm
- reinforcements between thumb and index finger;
- back made of abrasion-resistant printed stretch fabric;
- fastening strap to adjust fit.

## HYPERGRIP

002094..NRRS



## MULTIPURPOSE GLOVES

in micro-perforated polyamide and palm in high-grip microfibre, with fastening strap.

## COMPOSITION:

- 85% polyamide
- 15% elastane

**SIZES:**  
S - XL

## SPECIFICATIONS:

- touch-sensitive fingertips on index and thumb;
- foam protectors on the palm;
- wrist fastening strap.

## SPORTAC (PPE CAT. II)

002097..GI



## PROTECTIVE GLOVES

- EN 388:2016
- EN ISO 21420

## PPE CATEGORY II:

Synthetic glove protecting against mechanical risks

## ABRASION RESISTANCE:

- 4 (performance levels)

## RESISTANCE TO BLADE CUTTING:

- Coupe test: X (not done)

## TEAR RESISTANCE:

- 4 (performance levels)

## PUNCTURE RESISTANCE:

- 3 (performance levels)

## RESISTANCE TO CUTTING BY BLADE EN ISO 13997:

- D (performance levels)

## EN PROTECTION AGAINST IMPACTS:

- P (performance level)

**SIZES:**  
8-11

## SPECIFICATIONS:

- Adamant® diamond structure for a maximum level of cutting resistance;
- exceptional comfort and dexterity;
- palm resistant to grease and wet grime;
- impact resistant on the back, shock absorbing structure on the palm of the hand.





# POP TOOLS



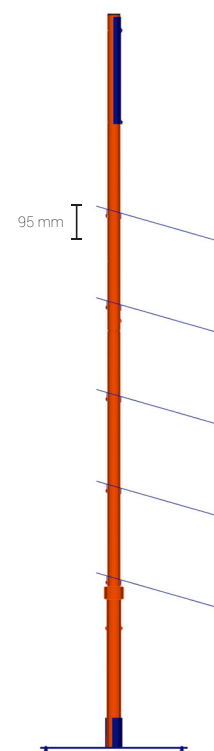
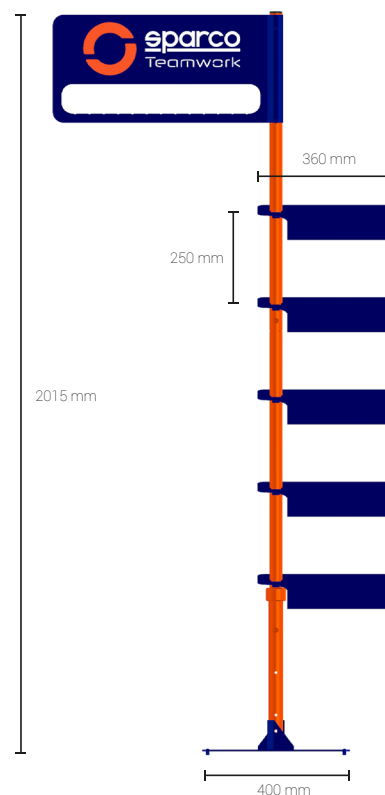




## DISPLAY

SM000213

NEW



### DISPLAY

Floor display for shoes and clothing. Completely **adjustable and adaptable** to any environment and height, it is made of **solid powder-coated metal**. Base with welded reinforcement and rubber feet. Suitable for displaying **5 pairs of shoes and up to 13 items of clothing**. Comes **complete with a kit of 10 SPARCO® custom hangers** (cod. 099108NR10).

## LANYARD

099104AZAF10 (KIT OF 10)  
099104AZAF



## LANYARD

099114AZ10 (KIT OF 10)  
099114AZ



## KEYCHAIN TEAMWORK

099092TEAMWOR10 (KIT OF 10)  
099092TEAMWORK



## KEYCHAIN GYMKHANA

099092GKHANA10 (KIT OF 10)  
099092GKHANA



## SHELF HIGHLIGHTER

0750011



H 17 X L 30 X P 17,5 CM

Light and durable material, suitable to show 1 shoe. **5-piece set.**

## HANGER

099108NR10

KIT of 10 customized SPARCO® HANGERS



## COUNTER DISPLAY

0750010



H 31 X L 38 X P 28 CM

Shaped like a pedal set, with an unmistakable racing style. Light and durable material, suitable to show 1 pair of shoes.



OUTLET  
OUTLET





GYMKHANA

**MAX**  
S1P SRC



SIZE: 36-48  
**07527..NRGR**

**LANDO**  
S1P SRC



SIZE: 36-48  
**07527..AZBM**



PRACTICE

**JACQUES**  
ESD S1P SRC



SIZE: 36-48  
**07517..NRRS**

**NIKI**  
ESD S1P SRC



SIZE: 36-48  
**07517..AZAF**



NITRO

**OTT**  
ESD S3 SRC



SIZE: 36-48  
**07522..NRVF**



CUP

**ADELAIDE**  
S1P SRC



SIZE: 35-46  
**07526..NRVF**

TORQUE

**ALGRAVE**  
S1 SRA



SIZE: 37-47  
**001289..NRRS**

**BOAVISTA**  
01 SRA



SIZE: 37-47  
**001289..NRGF**

**CHARADE**  
01 SRA



SIZE: 37-47  
**001289..BMAF**

SEATTLE SOFTSHELL



SIZE: S-3XL  
**02404NR..**



SIZE: S-3XL  
**02404BM..**

PORTLAND POLO



SIZE: S-3XL  
**02407AZ..**



SIZE: S-3XL  
**02407NR..**



SIZE: S-3XL  
**02407BM..**

TRENTON T-SHIRT



SIZE: S-3XL  
**02408AZ..**



SIZE: S-3XL  
**02408NR..**



SIZE: S-3XL  
**02408BM..**



**SPECIAL PRICE**  
while stocks last

All prices  
indicated in the  
catalogue are meant  
**VAT NOT INCLUDED**



# CERTIFICATIONS AND CE STANDARDS

## GUIDE TO EN ISO 20345:2011 STANDARDS

**Footwear for professional use in accordance with EN ISO 20345:2011** are marked with an “S” (Safety) as Safety Footwear. The so-called “**basic**” shoe is marked with the letters “**SB**” (S = Safety - “B” = Basic). This footwear must have the following minimum requirements:

- height of the upper ■ toe cap (minimum length, minimum supporting base) ■ upper in fresh split leather, microfibre and similar ■ front lining ■ insole ■ sole in any type of material, can be smooth
- the upper, in the low footwear, can be opened in the heel area.

In “**SB**” footwear, the following requirements are never included unless specified in detail:

- antistatic ■ energy absorption of the heel ■ dynamic waterproofing of the upper ■ sole with lugs
- rear lining ■ water-repellent upper ■ anti-puncture plate or fabric.

The meaning of the stamping that you can find on the footwear is given below. They have been designed, equipped with toe caps designed to provide protection against impact when tested at an energy level of 200J”.

### EN ISO 20345:2011

**Protective footwear in accordance with EN ISO 20345:2011** is called “Protective footwear”.

It is basically identical to safety footwear. The only differences are the following:

- impact protection toe cap with energy of 100 J and compression of 10 KN
- it is marked with “P” (Protective) in place of the “S” (Safety).

NB: use in all workplaces where the protection of 100 J is sufficient.

## THE MEANING OF THE EUROPEAN STANDARDS

**EN ISO 20349:2010** Small splashes of molten metal such as those produced during welding operations and related processes.

**EN ISO 20344:2011** Test methodology and general requirements.

**EN ISO 20345:2011** Specifications of safety footwear with toe resistance at 200 J.

**EN ISO 20346:2011** Specifications of protective footwear with toe resistance at 100 J.

**EN ISO 20347:2012** Specifications of “work” or “professional” footwear. No specific toe cap resistance.

**UNI 11583:2015** Footwear marked UNI 11583:2015 meets the requirements of the UNI 11583:2015 standard which specifies the requirements for safety, protective and work footwear for professional use for work on sloping roofs.

FOOTWEAR CLASSIFIED “S”		
SB	BASIC Requirements	
S1/01	S1/01 BASIC requirements supplemented by:	<ul style="list-style-type: none"> <li>■ closed back (also low footwear)</li> <li>■ antistatic</li> <li>■ FO resistance to hydrocarbons</li> <li>■ energy absorption capacity of the heel</li> </ul>
S2/02	S1/01 BASIC requirements supplemented by:	<ul style="list-style-type: none"> <li>■ dynamic waterproofing of the upper material</li> </ul>
S3/03	S2/02 BASIC requirements supplemented by:	<ul style="list-style-type: none"> <li>■ anti-puncture plate</li> <li>■ sole with lugs or tread</li> </ul>
S4/04	S3/03 BASIC requirements supplemented by:	<ul style="list-style-type: none"> <li>■ antistatic</li> <li>■ energy absorption of the heel</li> <li>■ FO resistance to hydrocarbons</li> </ul>
S5	S4 BASIC requirements supplemented by:	<ul style="list-style-type: none"> <li>■ anti-puncture plate</li> <li>■ sole with lugs or tread</li> </ul>

SLIP RESISTANCE CLASSES	
<b>SRA</b>	Slip resistance with ceramic ground with water and detergent.
<b>SRB</b>	Slip resistance with steel and glycerine ground.
<b>SRC</b>	Slip resistance with both conditions described above.

All Sparco Teamwork safety footwear is certified with SRC class slip resistance.

Marking of conformity with Regulation (EU) 2016/425	Manufacturer's name <b>SPARCO</b>			Production date <b>01/022</b>
EN ISO 20345:2011 European standard	<b>S3</b>	<b>SRC</b>	<b>WR</b>	<b>00000 - LANDO</b>
	Protection class	Slip resistance requirement	Additional requirements	Product code

The following are affixed on the gusset or on the tongue of the shoe:  
 - **manufacturer's mark** - **the article code** - **the month and year of manufacture** - **CE conformity marking**

PROTECTION CLASS SYMBOL		EN ISO 20345:2011				EN ISO 20347:2012				EN ISO 20345:2011		EN ISO 20347:2012		Minimum required values EN ISO 20345:2011 + EN ISO 20347:2012	
		SB	S1	S2	S3	OB	O1	O2	O3	S4	S5	O4	O5		
	Closed heel area	0	V	V	V	0	V	V	V	V	V	V	V		
	Toe cap resistant to an impact of 200J	V	V	V	V	-	-	-	-	V	V	-	-	Mechanical risk, toe protection, falling objects, foot impacts, height after impact ≥ 14mm (size 42)	
	Toe cap resistant to static compression of 15 kN	V	V	V	V	-	-	-	-	V	V	-	-	Mechanical risk, toe protection, falling objects, foot impacts, height after impact ≥ 14mm (size 42)	
A	Antistatic footwear	0	V	V	V	0	V	V	V	V	V	V	V	Electrical resistance of the bottom compressed between 1x105 OHM and 1x109 OHM	
E	Energy absorption in the heel area	0	V	V	V	0	V	V	V	V	V	V	V	Mechanical risk: reduction of trauma to the heel resulting from impacts or falls from limited heights, mechanical energy ≥ 20 Joules	
FO ex oro	Resistance to hydrocarbons of the sole	0	V	V	V	0	0	0	0	V	V	0	0	Volume increase of the sole sample < 12%	
WRU	Penetration and water absorption of the upper	0	-	V	V	0	0	V	V	-	-	-	-	Resistance to penetration and absorption of water from the upper. H2O absorption after 60' ± 30% H2O transmitted after 60' ± 0.2 g	
P	Resistance to perforation of the bottom of the footwear	0	0	0	V	0	0	0	V	0	V	0	V	F ≥ 1100 N	
CI	Insulation from the cold of the bottom of the footwear	0	0	0	0	0	0	0	0	0	0	0	0	Increase T ≥ 22°C placed on a plate at a T of 150°C for 30'	
HI	Insulation from the heat of the bottom of the footwear	0	0	0	0	0	0	0	0	0	0	0	0	Decrease T ≥ 10°C in an environment at -17°C for 30'	
C	Conductive footwear	0	-	-	-	0	-	-	-	-	-	-	-	Electrical resistance of the bottom < 1x105 OHM	
HRO	Heat resistance by contact of the sole	0	0	0	0	0	0	0	0	0	0	0	0	Sample in contact at 300°C for 60'' - Does not melt	
AN	Ankle protection	0	0	0	0	0	0	0	0	0	0	0	0	Mechanical risk, ankle protection: average value transmitted force ≥ 10 kN maximum value <15 kN	
	Electrically insulating footwear (Dielectric)	0*	-	-	-	0	-	-	-	0	0	0	0	Class 00 or Class 0 - CEI EN 50321 standard	
WR	Water resistant footwear	0	0	0	0	0	0	0	0	-	-	-	-	After 1000 steps or after 80' of automatic dynamic cycle, no more than 3 cm2 of water must enter (stain)	
M	Metatarsal protection	0	0	0	0	-	-	-	-	0	0	-	-	Mechanical risk, metatarsal protection: falling objects, impact to the foot. Height after impact ≥ 40 mm (size 42)	
CR	Cutting resistance of the upper - F ≥ 1100 N	0	0	0	0	0	0	0	0	0	0	0	0	F ≥ 1100 N	
SRC	(SRA+SRB) Requisito di antiscivolo	V	V	V	V	V	V	V	V	V	V	V	V	Slip protection on different surfaces	

V = Mandatory requirement for the indicated category  
 0 = Optional requirement added to the mandatory ones, if indicated on the marking - = Non-mandatory requirement, check shoe stamping

## ESD CEI EN 61340-5-1 2016 | COR 1:2017 STANDARD

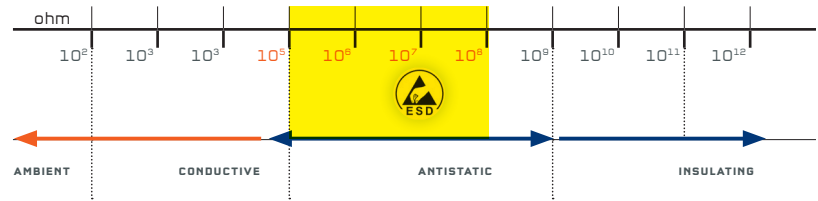
The abbreviation **ESD** (ElectroStaticDischarge) indicates a **discharge of static energy that passes from one body to another**. In hazardous workplaces, ESD discharges can be the cause of even serious accidents (starting a fire), and can damage machinery and their sensitive components.

**ESD shoes are required for:**

- Work with microchips
- Production of sensitive electrical parts
- In painting
- When working in contact with flammable liquids and gases

Evaluated on ESD by conditioning the shoe at 12% relative humidity:

- resistance of the footwear/operator combination | metal electrode less than 1x10-9 ohm
- storage capacity of the electric charge of the footwear/operator combination| metal electrode less than 100 volts



## REGULATION (EU) 2016/425

Article 47: EC certificates issued in accordance with Directive 89/686/EEC are valid until 21/04/2023.

After 21/04/2019, all new models must be certified according to Regulation 2016/425.

## COMPLIANCE WITH THE REACH REGULATION

The company complies with the REACH Regulation (EC) no. 1907/2006 in force since 1 June 2007, ensuring that the products used and supplied by SPARCO TEAMWORK:

- do not contain SVHC (Substance of Very High Concern) substances;
- do not contain substances that are on the list in Annex XIV\_ of the REACH Regulation;
- do not contain substances that are on the constantly updated Candidate List;
- do not contain substances subject to restrictions (Annex XVII of REACH) that the relative restrictions of use are observed.

Furthermore, in the event that an article contains an SVHC (Substance of Very High Concern) substance or one on the Candidate List in concentrations higher than 0.1% weight/weight, sufficient information is provided with the name of the substance and instructions helpful for the safe use of the article (see Article 59.1 of REACH).



# NEW EN ISO 20345:2022

Footwear for professional use in accordance with EN ISO 20345:2022 are marked with an “S” (Safety) as Safety Footwear.

## Safety footwear categories:

Category	Class	Additional requirements
SB	I o II	Safety basic requirements
S1	I	SB + Closed heel area + Antistatic property + Energy absorption of seat region
S2	I	S1+ Upper water penetration and absorption
S3 (metal insert type P) or S3L (non-metal insert type PL) or S3S (non-metal insert type PS)	I	S2 + perforation resistance according to the type cleated outsole
S4	II	SB + Closed heel area + Antistatic property + Energy absorption of seat region
S5 (metal insert type P) or S5L (non-metal insert type PL) or S5S (non-metal insert type PS)	II	S4 + perforation resistance according to the type cleated outsole
S6	I	S2 + water resistance of the whole footwear
S7 (metal insert type P) or S7L (non-metal insert type PL) or S7S (non-metal insert type PS)	I	S3 + water resistance of the whole footwear
Class I: Footwear made from leather and other materials, excluding all-rubber or all-polymeric footwear		
Class II: All-polymeric (i.e. entirely moulded) including all-rubber (i.e. entirely vulcanized) footwear		

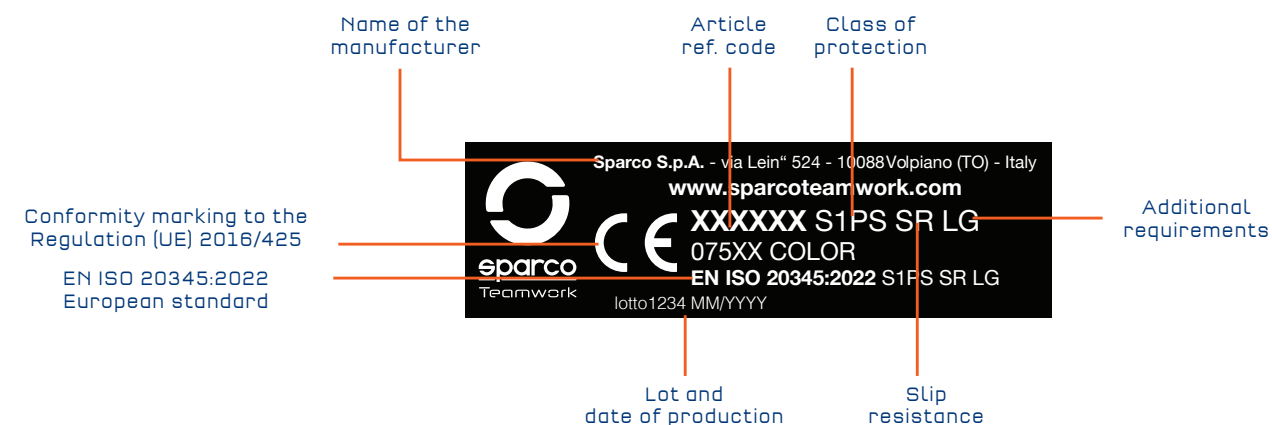
Sparco Teamwork footwear are designed to minimise the risk of injury which could be inflicted by the wearer during use. They are designed to be used in conjunction with a safe working environment, and will not completely prevent injury if an accident occurs which exceeds the testing limits of EN ISO 20345:2022.

The footwear protects the wearer's toes against risk of injury from falling objects and crushing when worn in industrial and commercial environments where potential hazards occur with the following protection plus, where applicable, additional protection.

Impact protection provided is 200 Joules.  
Compression protection provided is 15,000 Newton's.

## PRODUCT MARKING

Marking on footwear denotes that the footwear is licensed according to the PPE regulation and is as follows:



Additional protection may be provided, and is identified on the product by it marking as follows:

	Marking code
<b>Perforation resistance</b>	
perforation resistance (min.1100 N) metal insert : d=4.5mm Conical Nail	P
perforation resistance (min.1100 N) non-metal insert :d=4.5mm Conical Nail	PL
perforation resistance (min.1100 N & each single value ≥950 N) non-metal insert: d=3.0mm Conical Nail	PS
<b>Electrical properties</b>	
Partially Conductive (maximum resistance 100 kΩ)	C
Antistatic (resistance range of 100 kΩ to 1000 MΩ)	A
<b>Resistance to inimical environments:</b>	
Heat Insulation of sole complex	HI
Cold Insulation of sole complex	CI
Energy absorption of seat region (20 Joules)	E
Water resistance	WR
Metatarsal protection	M
Ankle protection	AN
Cut resistant	CR
Scuff Cap abrasion	SC
Slip resistance - on ceramic tile floor with glycerine	SR
<b>Upper</b>	
Water penetration and water absorption	WPA
<b>Outsole</b>	
Resistance to hot contact	HRD
Resistance to fuel oil	FO
Ladder grip	LG

## SLIP RESISTANCE

For footwear successfully tested against EN ISO 20345:2022 slip resistance, the following marking symbol apply:

- Basic requirement of slip resistance: Ceramic tile with sodium lauryl sulphate, no symbol.
- Additional requirement of slip resistance: Ceramic tile with glycerol, symbol SR.
- The footwear is not tested against slip resistance requirement, it is marked with symbol “Ø”.

Note: Slippage may still occur in certain environments.

## PERFORATION RESISTANCE

In Sparco Teamwork footwear, non-metal perforation-resistance insert is used. The perforation resistance of this footwear has been measured in the laboratory using standardized nails and forces. Nails of smaller diameter and higher static or dynamic loads will increase the risk of perforation occurring. In such circumstances, additional preventative measures should be considered. Three generic types of perforation resistant inserts are currently available in PPE footwear. These are metal types and those from non-metal materials, which shall be chosen on basis of a job-related risk assessment. All types give protection against perforation risks, but each has different additional advantages or disadvantages including the following:

Metal (e.g. S1P, S3): Is less affected by the shape of the sharp object/hazard (i.e. diameter, geometry, sharpness) but due to shoemaking techniques may not cover the entire lower area of the foot.  
Non-metal (PS or PL or category e.g. S1PS, S3L): May be lighter, more flexible and provide greater coverage area, but the perforation resistance may vary more depending on the shape of the sharp object/hazard (i.e. diameter, geometry, sharpness). Two types in terms of the protection afforded are available. Type PS may offer more appropriate protection from smaller diameter objects than type PL.

## CE DECLARATION OF CONFORMITY

For Declaration of conformity, please refer to website: [www.sparcoteamwork.com](http://www.sparcoteamwork.com).



ALPHABETICAL  
**INDEX**  
ALPHABETICAL

SAFETY SHOES

• ACROPOLIS	P. 15	• PATO	P. 21
• ALBERT	P. 37	• PETTER	P. 33
• ARCTIC	P. 43	• RANGER	P. 27
• BAKU	P. 40	• RICARD	P. 37
• BALTIMORA	P. 22	• RICHMOND	P. 23
• CHARLOTTE	P. 22	• RED BULL	P. 10
• CHESTER	P. 14	• ROC	P. 40
• COLTON	P. 19	• SANREMO	P. 17
• CONOR	P. 24	• SEB	P. 13
• DANI	P. 12	• SOCHI	P. 38
• DANICA	P. 23	• SONOMA	P. 21
• DETROIT	P. 19	• STIRIA	P. 40
• DIDIER	P. 33	• STONE	P. 41
• DURANGO	P. 47	• TACOMA	P. 14
• EDMONTON	P. 21	• TEXAS	P. 18
• FELIX	P. 18	• WOKING	P. 45
• FORESTER	P. 27	• ZELTWEG	P. 45
• HANNU	P. 34		
• HINWIL	P. 45		
• JODY	P. 30		
• JOS	P. 28		
• JURI	P. 25		
• KEKE	P. 30		
• LEAP	P. 41		
• MARCUS	P. 33		
• MARTINI	P. 17		
• MIKI	P. 49		
• MIKKO	P. 35		
• MONTECARLO	P. 17		
• MOTEGI	P. 39		
• NELSON	P. 30		
• NIGEL	P. 29		
• NURBURG	P. 37		
• OKAYAMA	P. 41		
• OLYMPUS	P. 15		
• PALMA	P. 46		

WORKWEAR

• ALABAMA TECH FULL ZIP	P. 59
• ATLANTA TECH SHORTS	P. 73
• AUSTIN TECH LIGHT SHELL	P. 55
• BERMUDA CARGO SHORTS	P. 76
• BOSTON CARGO TROUSERS	P. 76
• COLORADO TECH HOODED FULL ZIP	P. 57
• DALLAS TECH DENIM	P. 71
• ILLINOIS TECH LIGHT VEST	P. 61
• KANSAS TECH LIGHT TROUSERS	P. 69
• LAREDO TECH LIGHT SHORTS	P. 75
• OREGON TECH TROUSERS	P. 67
• TOLEDO TECH POLO	P. 63
• TUCSON TECH T-SHIRT	P. 65
• WILSON WINDSTOPPER	P. 77
• YORK TECH SOFT SHELL	P. 53

WORK GLOVES      POP TOOLS

• HYPERGRIP	P. 80	• COUNTER DISPLAY	P. 85
• MECA III	P. 80	• DISPLAY	P. 84
• SPORTAC	P. 81	• HANGER	P. 85
		• LANYARD	P. 85
		• KEYCHAIN	P. 85
		• SHELF HIGHLIGHTER	P. 85

TERMS OF SALE

VALIDITY

From 01 December 2023 to 30 November 2024

The data and characteristics indicated in this catalogue are subject to changes without prior notice.

The photographic reproduction of the shades of colour may not be perfectly faithful to reality.

In order to constantly improve the collections, the products contained in this catalogue could be replaced or modified. The photos contained are purely illustrative and not binding.



## ADRENALINE, PERFORMANCE, SAFETY AND PASSION:

the four key words that have always characterized Sparco in its technical support activity for **Motorsport teams**, first and foremost Redbull in F1. Hence the desire to support the ambitious project of '**Acrobatica**' and skipper Alberto Riva with the 'Sparco Teamwork' brand, synonymous with quality and trust in teamwork.

Sparco TEAMWORK is alongside ACROBATICA not only for the "**Class 40**" sporting activity, but also in the specific construction and restoration activity of all the staff employed daily with the **supply of personalized 'Acrobatica' safety shoes and workwear**.







#### HEADQUARTERS

SPARCO S.p.A.  
Via Leinì, 524  
10088 Volpiano (TO) - Italy  
Tel. +39 011 22.40.716  
e-mail: [teamwork@sparco.it](mailto:teamwork@sparco.it)  
[www.sparco-official.com](http://www.sparco-official.com)

#### BRANCHES

SPARCO TEAMWORK IBERIA, SL  
C/ Illa de Buda, 2  
Polígono industrial Can Canals  
08192 Sant Quirze del Vallés.  
Barcelona  
+34 93 806 54 94  
[info@iberia.sparcoteamwork.com](mailto:info@iberia.sparcoteamwork.com)



[sparcoteamwork.com](http://sparcoteamwork.com)

